

(FRSBE2.FRSBE) 23110

AL-5972 (FAA)

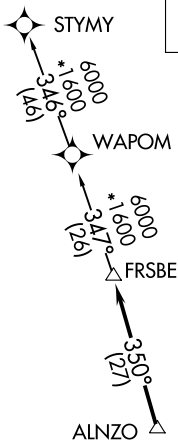
POMPANO BEACH AIRPARK (PMP)
POMPANO BEACH, FLORIDA

FRSBE TWO DEPARTURE (RNAV)

**TOP ALTITUDE:
ASSIGNED BY ATC**

RNAV 1-DME/DME IRU or GPS.
RADAR required.

ATIS
120.55
GND CON
121.9
POMPANO BEACH TOWER*
125.4 (CTAF)
MIAMI DEP CON
126.05 251.1



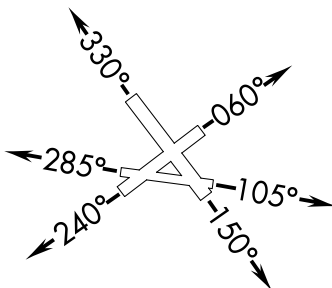
TAKEOFF MINIMUMS

Rwys 6, 24, 28, 33: Standard.

Rwy 10: 300-1¼ or standard with minimum climb of 265' per NM to 300.

Rwy 15: 300-2 or standard with minimum climb of 425' per NM to 500.

- NOTE: Jet aircraft only.
- NOTE: Accelerate to 250K, if unable, advise ATC.
- NOTE: WAPOM Transition for KMCO, KDAB, and KMLB area arrivals.



NOTE: Chart not to scale.

DEPARTURE ROUTE DESCRIPTION

TAKEOFF RUNWAY 6: Climb on heading 060° or as assigned by ATC for RADAR vectors to ALNZO, thence. . . .

TAKEOFF RUNWAY 10: Climb on heading 105° or as assigned by ATC for RADAR vectors to ALNZO, thence. . . .

TAKEOFF RUNWAY 15: Climb on heading 150° or as assigned by ATC for RADAR vectors to ALNZO, thence. . . .

TAKEOFF RUNWAY 24: Climb on heading 240° or as assigned by ATC for RADAR vectors to ALNZO, thence. . . .

TAKEOFF RUNWAY 28: Climb on heading 285° or as assigned by ATC for RADAR vectors to ALNZO, thence. . . .

TAKEOFF RUNWAY 33: Climb on heading 330° or as assigned by ATC for RADAR vectors to ALNZO, thence. . . .

. . . . on track 350° to FRSBE, then on (transition). Maintatin ATC assigned altitude, expect filed altitude 10 minutes after departure.

STYMY TRANSITION (FRSBE2.STYMY)

WAPOM TRANSITION (FRSBE2.WAPOM)

FRSBE TWO DEPARTURE (RNAV)
(FRSBE2.FRSBE) 20APR23

POMPANO BEACH, FLORIDA
POMPANO BEACH AIRPARK (PMP)

SE-3, 08 AUG 2024 to 05 SEP 2024

SE-3, 08 AUG 2024 to 05 SEP 2024