

| | | | |
|--|------------------------|-----------------------------|---|
| WAAS CH 65641 W22A | APP CRS 217° | Rwy Idg TDZE Apt Elev | 5500 904 904 |
|--|------------------------|-----------------------------|---|

RNAV (GPS) RWY 22

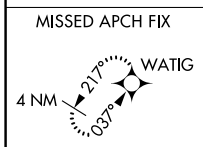
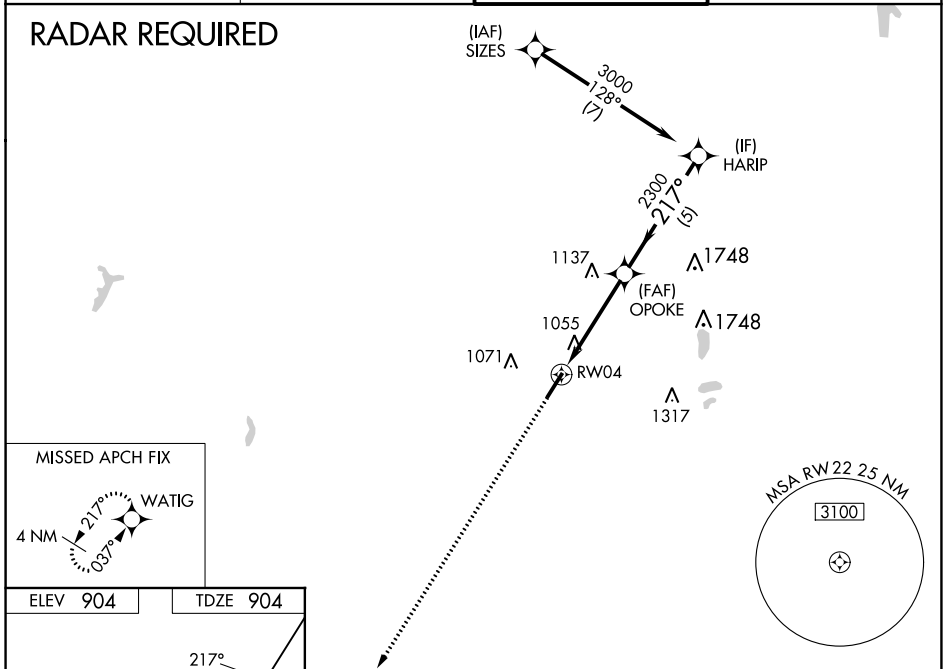
BOLTON FLD (TZR)

⚠ For uncompensated Baro-VNAV systems, LNAV/VNAV NA below -16°C (4°F) or above 54°C (130°F). Baro-VNAV and VDP NA when using John Glenn Columbus Intl altimeter setting. DME/DME RNP-0.3 NA. When local altimeter setting not received use John Glenn Columbus Intl setting and increase LPV DA to 1196 feet and LNAV/VNAV DA to 1382 feet and all MDA 60 feet; increase LPV and LNAV/VNAV all Cats visibility 1/8 SM, and LNAV Cat C/D visibility 1/4 SM.

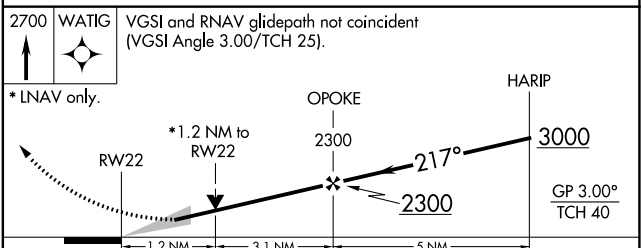
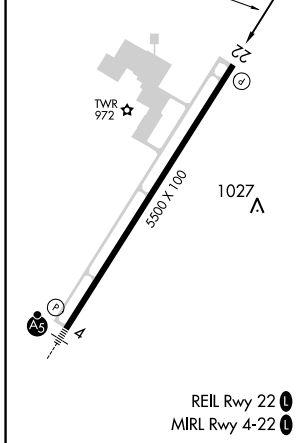
MISSED APPROACH: Climb to 2700 direct WATIG and hold.

| | | | |
|----------------------------|--|---|-------------------------|
| AWOS-3PT 135.925 | COLUMBUS APP CON 134.0 279.6 | BOLTON TOWER ★ 128.1 (CTAF) 0 | GND CON 121.8 |
|----------------------------|--|---|-------------------------|

RADAR REQUIRED



| | |
|-----------------|-----------------|
| ELEV 904 | TDZE 904 |
|-----------------|-----------------|



| CATEGORY | A | B | C | D |
|--|------------------------|-----------------------|-------------------------------|-----------------------|
| LPV DA | 1154-7/8 250 (300-7/8) | | | |
| LNAV/VNAV DA | 1339-1/2 435 (500-1/2) | | | |
| LNAV MDA | 1320-1 | 416 (500-1) | 1320-1 1/8 | 416 (500-1 1/8) |
| <input checked="" type="checkbox"/> CIRCLING | 1360-1 456 (500-1) | 1380-1 476 (500-1) | 1380-1 1/2 476 (500-1 1/2) | 1500-2 596 (600-2) |