

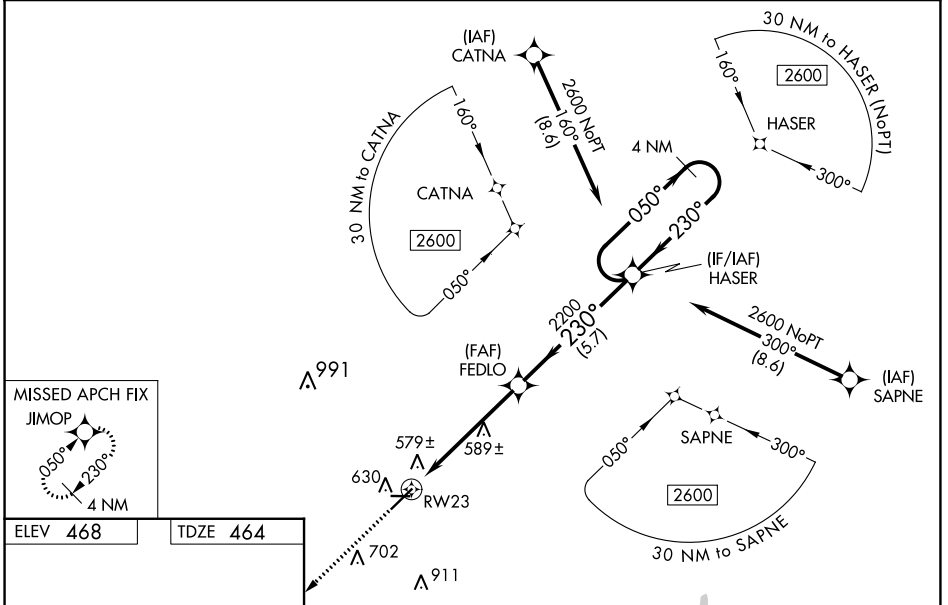
WAAS CH 70724 W23A	APP CRS 230°	Rwy Idg TDZE Apt Elev	6011 464 468
--	------------------------	-----------------------------	---

RNAV (GPS) RWY 23

JIMMY CARTER RGNL (ACJ)

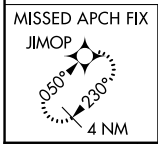
RNP APCH-GPS.		MALSF MISSED APPROACH: Climb to 2600 direct JIMOP and hold.
<p>▼ Baro-VNAV NA and VDP NA when using Columbus altimeter setting. For uncompensated Baro-VNAV systems, LNAV/VNAV NA below -15°C or above 41°C. For inop ALS when using Columbus altimeter setting, increase LPV and LNAV/VNAV all Cats visibility to 1 1/8 SM. Rwy 23 helicopter visibility reduction below 3/4 SM NA. When local altimeter setting not received, use Columbus altimeter setting and increase LPV DA to 876 feet and all visibilities 1/4 SM; increase LNAV/VNAV DA to 881 feet and all visibilities 1/4 SM; increase all MDAs 120 feet and LNAV visibility Cats C/D 3/8 SM, and Circling visibility Cat C 1/2 SM and Cat D 1/4 SM. For inop ALS, increase LPV and LNAV/VNAV all Cats visibility to 3/8 SM. Circling Rwy 10, 28 NA at night.</p>		

AWOS-3 128.375	ATLANTA APP CON * 124.2 323.1	CLNC DEL 119.95	UNICOM 122.8 (CTAF)
--------------------------	---	---------------------------	-------------------------------

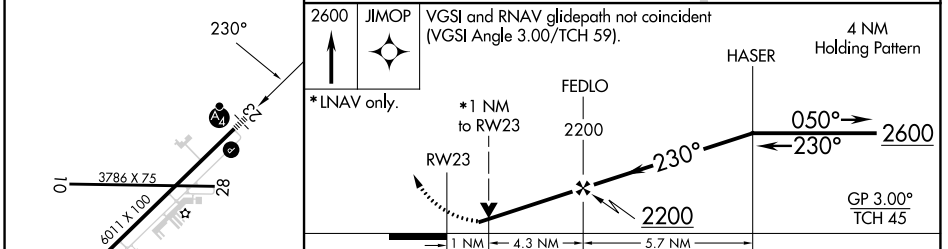


SE-4, 08 AUG 2024 to 05 SEP 2024

SE-4, 08 AUG 2024 to 05 SEP 2024



ELEV 468	TDZE 464
-----------------	-----------------



REIL Rwy 23 HIRL Rwy 5-23	CATEGORY A B C D LPV DA 760-3/4 296 (300-3/4) LNAV/VNAV DA 765-3/4 301 (300-3/4) LNAV MDA 840-3/4 376 (400-3/4) 840-3/4 376 (400-3/4) CIRCLING 940-1 472 (500-1) 1020-1 1/2 1280-2 3/4 552 (600-1 1/2) 812 (900-2 3/4)			
------------------------------	---	--	--	--