

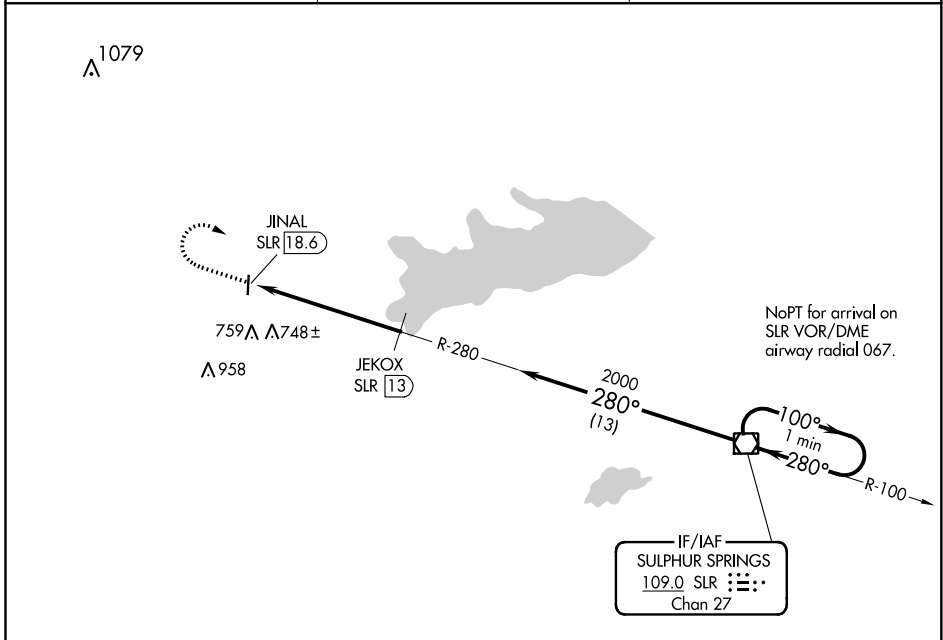
VOR/DME SLR 109.0 Chan 27	APP CRS 280°	Rwy Idg TDZE Apt Elev	N/A N/A 516
---	------------------------	--------------------------	--

VOR-A
COMMERCE MUNI (2F7)

▽ **△** NA Use Greenville altimeter setting; when not received, use Sulphur Springs altimeter setting. DME required.

MISSED APPROACH: Climb to 2200 then right turn direct SLR VOR/DME and hold.

GVT AWOS-3 133.425	FORT WORTH CENTER 127.6 254.3	CTAF 122.9
------------------------------	---	----------------------



SC-2, 07 OCT 2021 to 04 NOV 2021

SC-2, 07 OCT 2021 to 04 NOV 2021

