

APP CRS	Rwy Idg	<b>3907</b>
<b>359°</b>	TDZE	<b>512</b>
	Apt Elev	<b>516</b>

# RNAV (GPS) RWY 36

COMMERCE MUNI (2F7)

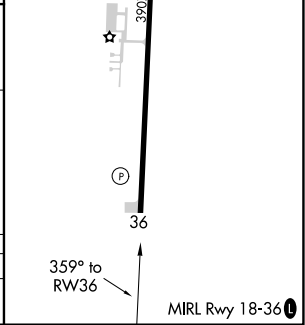
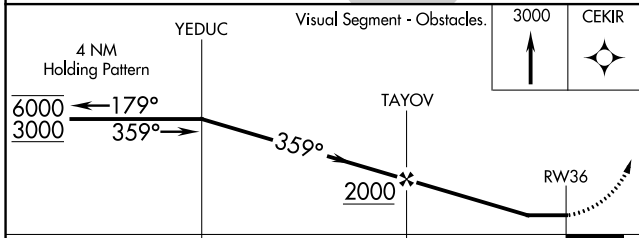
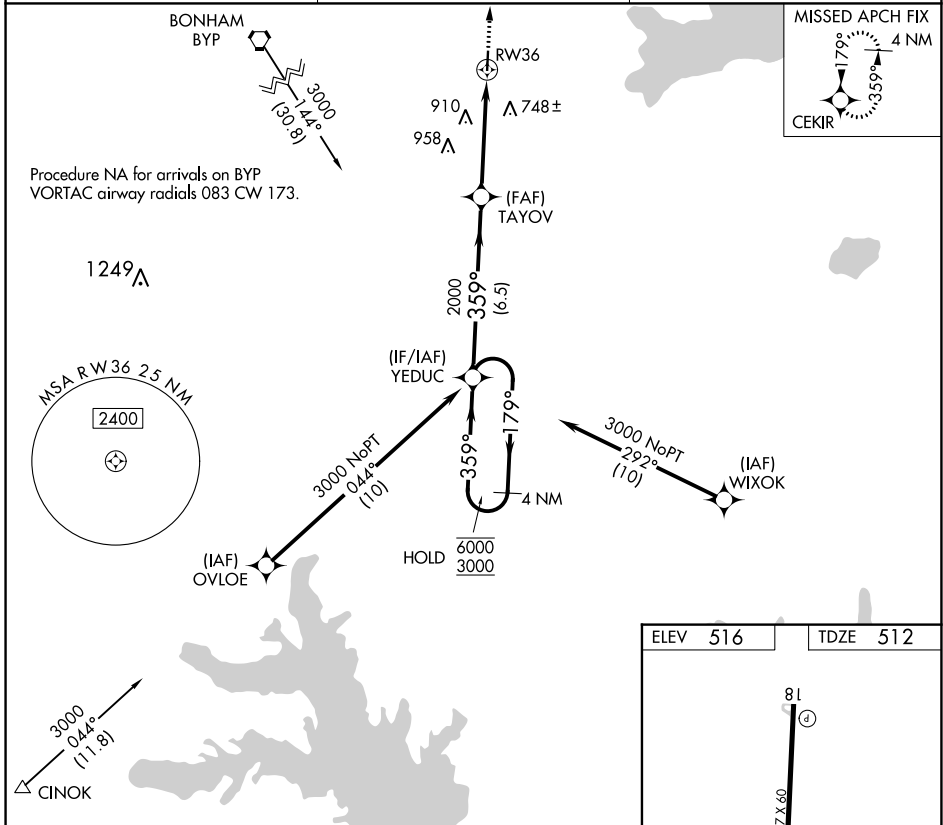
RNP APCH.  
 Use Greenville altimeter setting, when not received, use Sulphur Springs altimeter setting and increase all MDAs 20 feet. Rwy 36 helicopter visibility reduction below 3/4 SM NA.

MISSED APPROACH: Climb to 3000 direct CEKIR and hold.

GVT AWOS-3  
**133.425**

FORT WORTH CENTER  
**127.6 254.3**

CTAF  
**122.9**



CATEGORY	A	B	C	D
LNAV MDA	1140-1	628 (700-1)	NA	

SC-2, 07 OCT 2021 to 04 NOV 2021

SC-2, 07 OCT 2021 to 04 NOV 2021