

# KINGDOM FOUR DEPARTURE

SC-2, 05 SEP 2024 to 03 OCT 2024

REGIONAL DEP CON  
125.2 343.65  
CTAF  
122.7

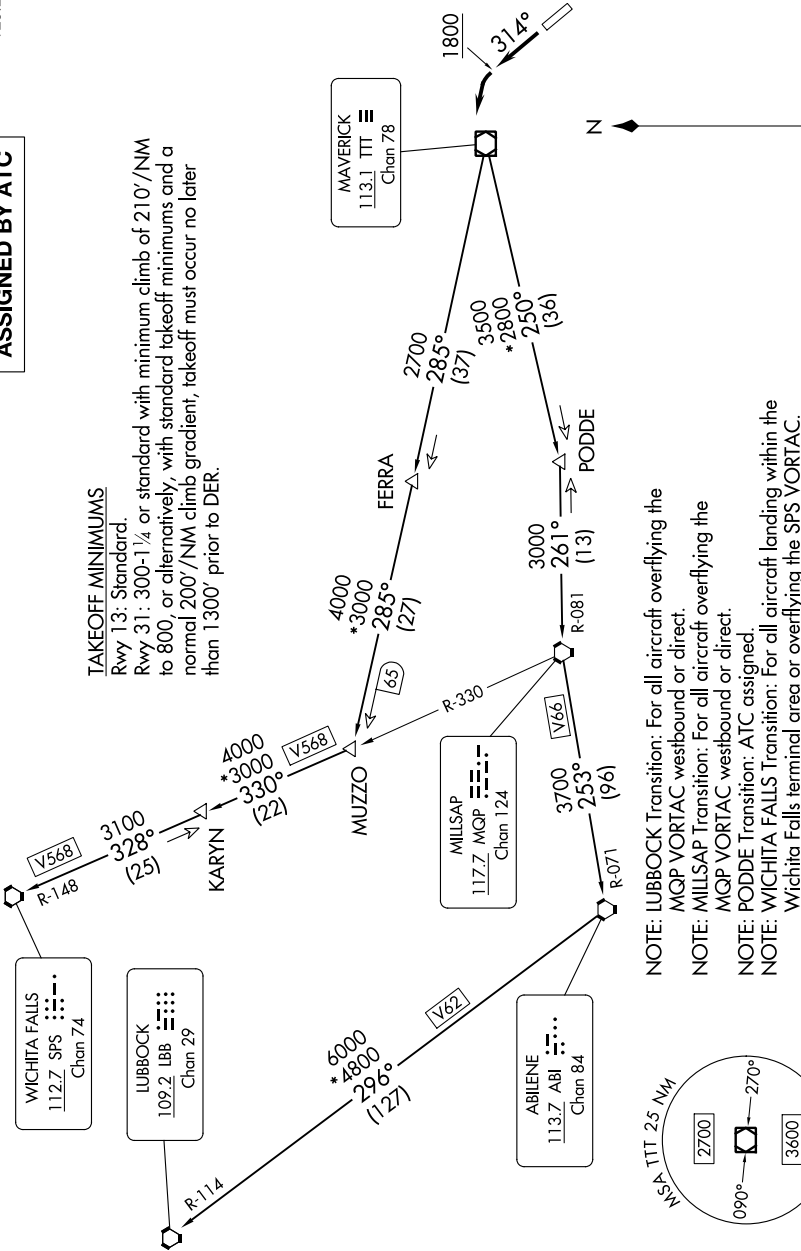
**TOP ALTITUDE:  
ASSIGNED BY ATC**

RADAR and DME required.

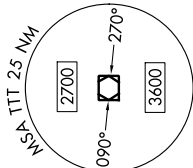
**TAKEOFF MINIMUMS**

Rwy 13: Standard.

Rwy 31: 300-1/4 or standard with minimum climb of 210'/NM to 800, or alternatively, with standard takeoff minimums and a normal 200'/NM climb gradient, takeoff must occur no later than 1300' prior to DER.



- NOTE: LUBBOCK Transition: For all aircraft overlying the MQP VORTAC westbound or direct.
- NOTE: MILLSAP Transition: For all aircraft overlying the MQP VORTAC westbound or direct.
- NOTE: PODDE Transition: ATC assigned.
- NOTE: WICHITA FALLS Transition: For all aircraft landing within the Wichita Falls terminal area or overlying the SPS VORTAC.
- NOTE: For all aircraft requesting 17000 and below.



NOTE: Chart not to scale.

(CONTINUED ON FOLLOWING PAGE)

# KINGDOM FOUR DEPARTURE

SC-2, 05 SEP 2024 to 03 OCT 2024