

| | | | |
|--|------------------------|---|-------------|
| WAAS CH 86622 W13A | APP CRS 136° | Rwy Idg TDZE 642 Apt Elev 660 | 4400 |
|--|------------------------|---|-------------|

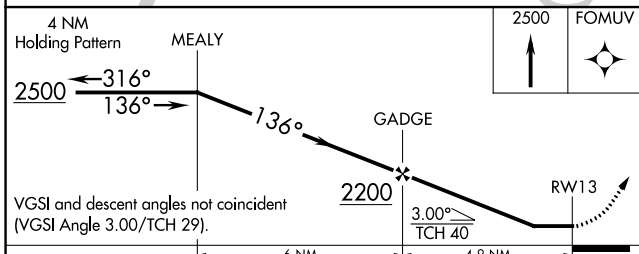
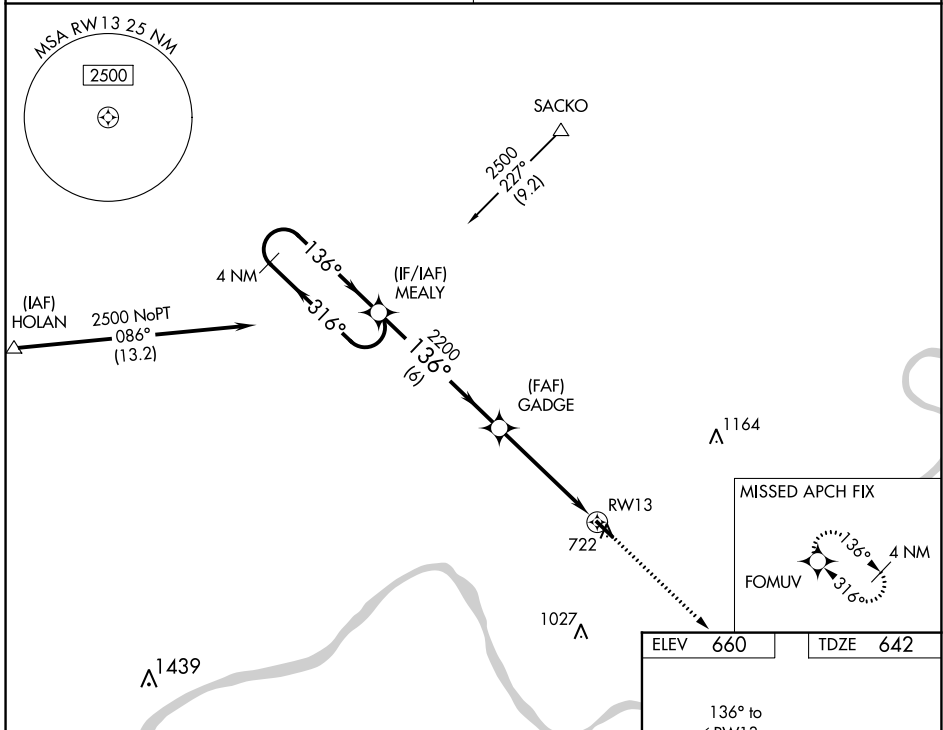
RNAV (GPS) RWY 13

PERRY COUNTY MUNI (TEL)

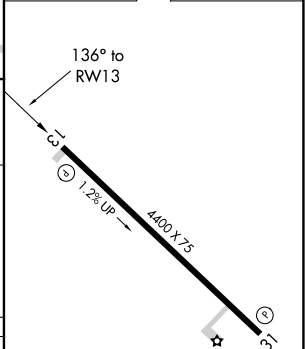
▼ When VGSi inop, Circling Rwy 31 NA at night. When VGSi inop, Straight-in/Circling Rwy 13 procedure NA at night. DME/DME RNP-0.3 NA. Visibility reduction by helicopters NA.
▲ NA Obtain local altimeter setting on CTAF; when not received, use Huntingburg altimeter setting and increase all MDA 80 feet and increase LP Cat C visibility ¼ mile and LNAV Cat C visibility ⅓ mile.

MISSED APPROACH: Climb to 2500 direct FOMUV and hold.

| | |
|--|---------------------------------|
| EVANSVILLE APP CON * 124.025 290.9 | UNICOM 122.7 (CTAF) 0 |
|--|---------------------------------|



| | |
|----------|----------|
| ELEV 660 | TDZE 642 |
|----------|----------|



| CATEGORY | A | B | C | D |
|----------|-----------------------|-----------------------|---------------------------|----|
| LP MDA | 1000-1 | 358 (400-1) | 1000-1 ⅛ 358 (400-1 ⅛) | NA |
| LNAV MDA | 1040-1 | 398 (400-1) | 1040-1 ¼ 398 (400-1 ¼) | NA |
| CIRCLING | 1080-1 420 (500-1) | 1120-1 460 (500-1) | 1120-1 ½ 460 (500-1 ½) | NA |

REIL Rwy 13 and 31 0
MIRL Rwy 13-31 0

EC-2, 03 OCT 2024 to 31 OCT 2024

EC-2, 03 OCT 2024 to 31 OCT 2024