

HUNTSVILLE, ALABAMA

AL-5924 (FAA)

22195

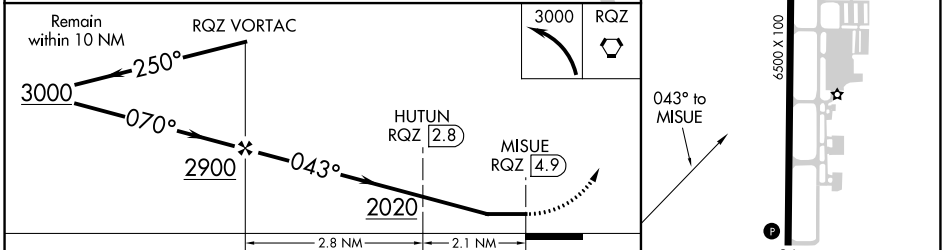
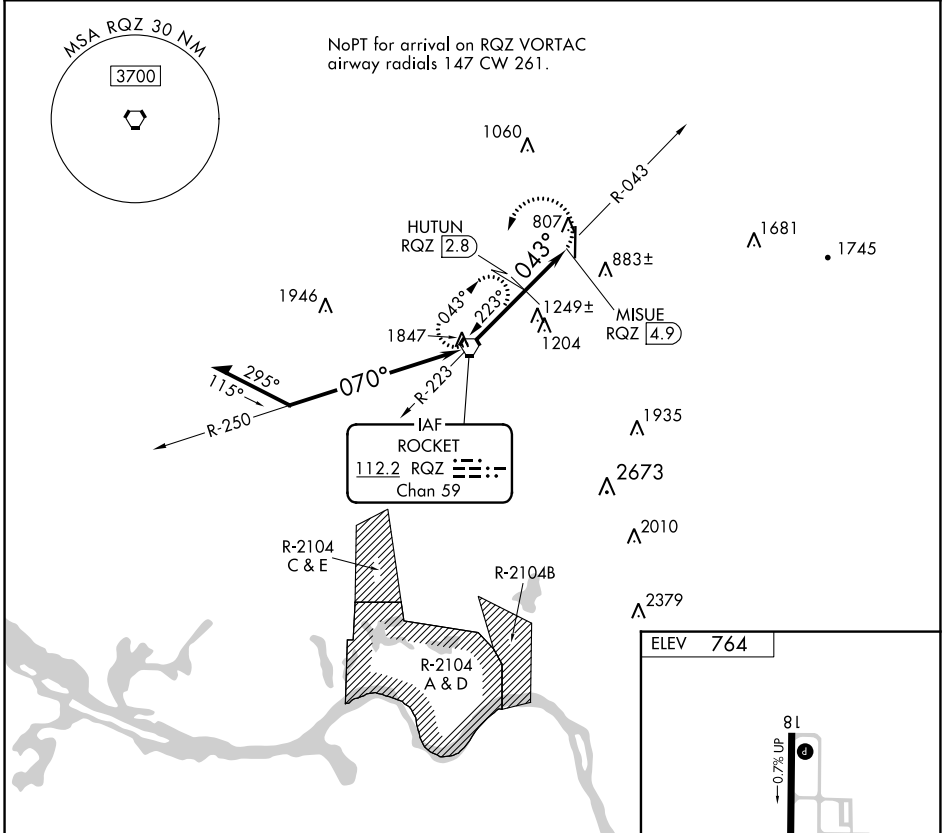
VORTAC RQZ 112.2 Chan 59	APP CRS 043°	Rwy Idg TDZE Apt Elev	N/A N/A 764
---------------------------------------	------------------------	--------------------------	--

VOR-B

HUNTSVILLE EXEC TOM SHARP JR FLD (MDQ)

DME required.		MISSED APPROACH: Climbing left turn to 3000 direct RQZ VORTAC and hold.	
---------------	--	---	--

AWOS-3PT 120.0	HUNTSVILLE APP CON* 125.6 354.1	GCO 121.725	UNICOM 123.0 (CTAF) 0
--------------------------	---	-----------------------	---------------------------------



CATEGORY	A	B	C	D
C CIRCLING	1500-1	736 (800-1)	1560-2¼ 796 (800-2¼)	2000-3 1236 (1300-3)

HUNTSVILLE, ALABAMA
Amdt 7B 28FEB19

HUNTSVILLE EXEC TOM SHARP JR FLD (MDQ)
34°52'N-86°33'W

VOR-B

SE-4, 03 OCT 2024 to 31 OCT 2024

SE-4, 03 OCT 2024 to 31 OCT 2024