

CANTON, ILLINOIS

AL-5900 (FAA)

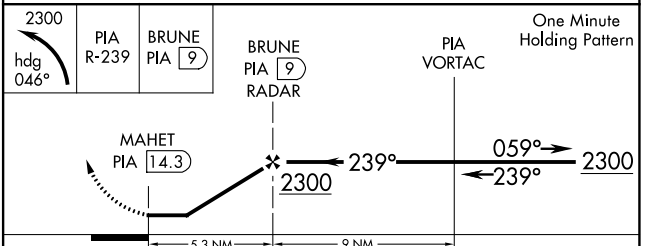
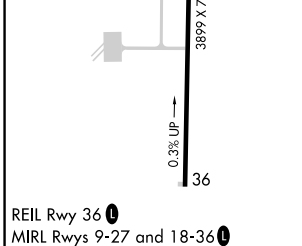
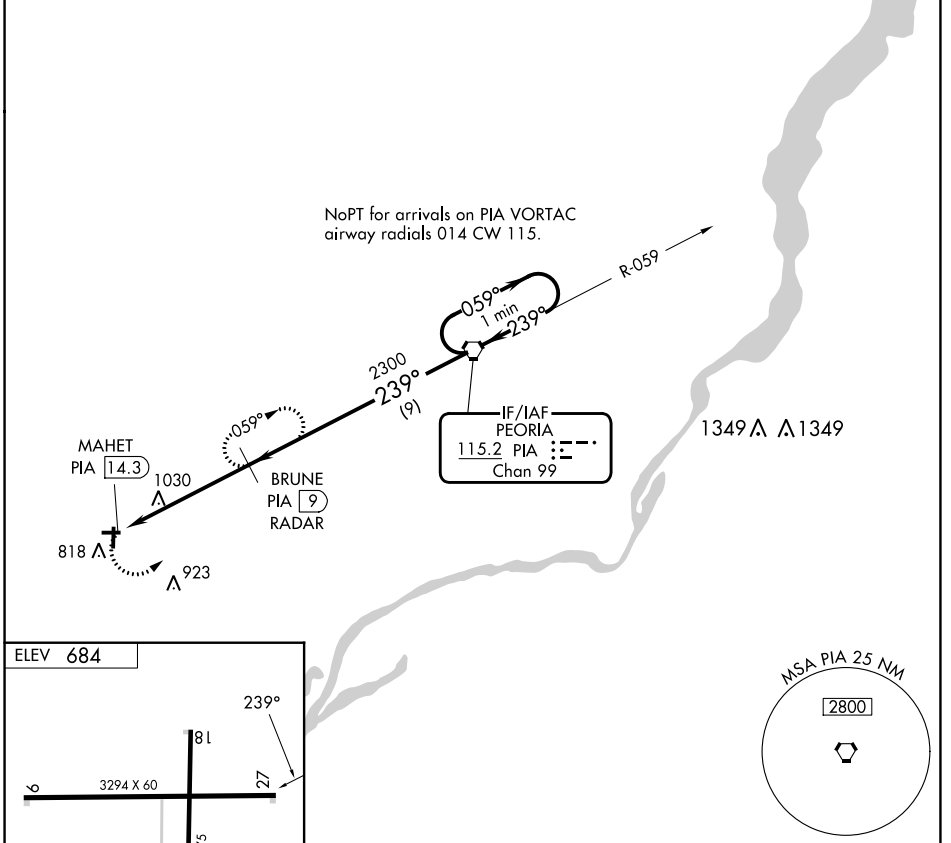
24193

VORTAC PIA <b>115.2</b> Chan <b>99</b>	APP CRS <b>239°</b>	Rwy Idg TDZE Apt Elev <b>N/A</b> <b>N/A</b> <b>684</b>
--	------------------------	---

**VOR-A**  
INGERSOLL (CTK)

<p><b>▽</b> DME or RADAR required.</p> <p><b>△</b> NA</p>	<p>MISSED APPROACH: Climbing left turn to 2300 via heading 046° and PIA R-239 to BRUNE/PIA 9 DME and hold.</p>
---	--

<p>PIA ASOS <b>126.1 282.2</b></p>	<p>SAINT LOUIS APP CON <b>125.8 269.2</b></p>	<p>UNICOM <b>122.8 (CTAF)</b></p>
--	---	---------------------------------------



FAF to MAP 5.3 NM						
Knots	60	90	120	150	180	
Min:Sec	5:18	3:32	2:39	2:07	1:46	
CATEGORY	A		B		C	D
CIRCLING	1400-1 716 (800-1)		1440-1 756 (800-1)		1440-2¼ 756 (800-2¼)	NA

CANTON, ILLINOIS  
Amdt 8B 02DEC21

40°34'N-90°04'W

INGERSOLL (CTK)  
**VOR-A**

EC-3, 08 AUG 2024 to 05 SEP 2024

EC-3, 08 AUG 2024 to 05 SEP 2024