

RNAV (GPS) RWY 35

NORTH LITTLE ROCK MUNI (OR.K)

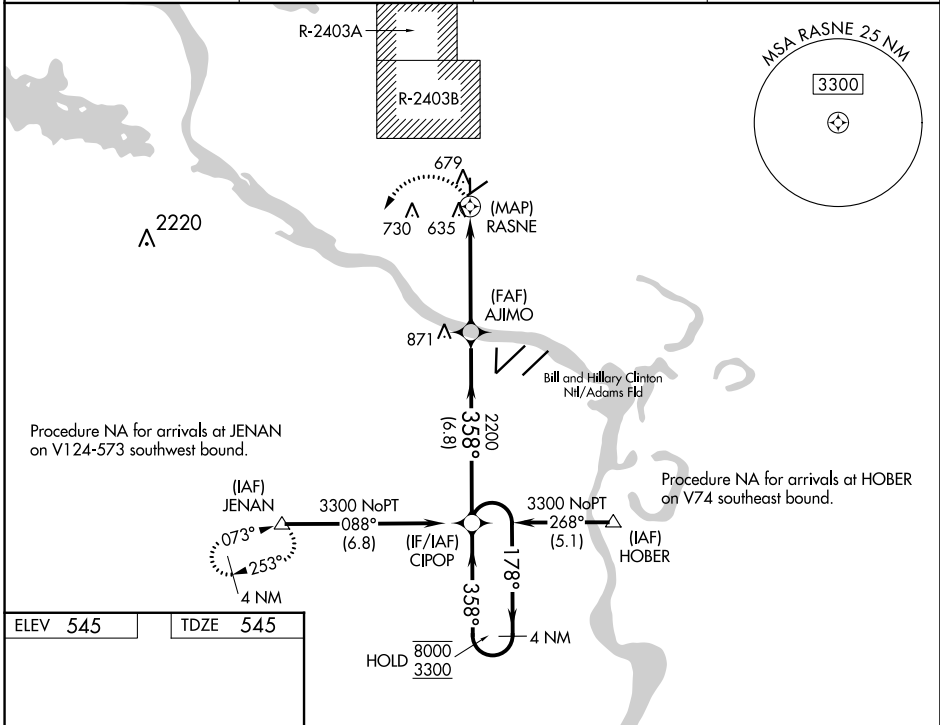
APP CRS	Rwy Idg	3019
358°	TDZE	545
	Apt Elev	545

RNP APCH.

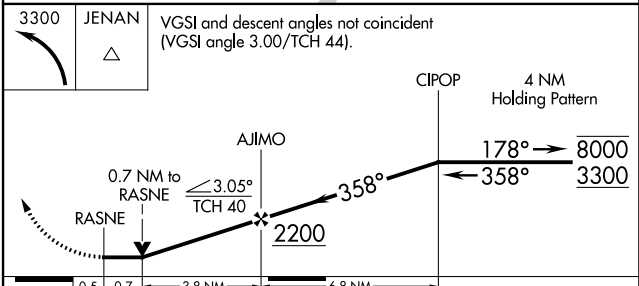
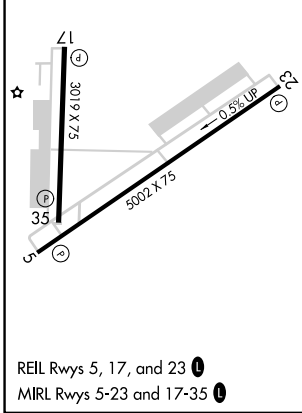
▼ Circling NA for Cats B and C north of Rwy 5-23 when R-2403B is active.
▲ Rwy 35 helicopter visibility reduction below 3/4 SM NA.
 Procedure NA when restricted area R-2403B is in use.

MISSED APPROACH: Climbing left turn to 3300 direct JENAN and hold.

AWOS-3PT 123.775	LITTLE ROCK APP CON 119.5 306.2	CLNC DEL 121.6	UNICOM 123.075 (CTAF) 0
----------------------------	---	--------------------------	-----------------------------------



ELEV 545	TDZE 545
----------	----------



CATEGORY	A	B	C	D
LNAV MDA	960-1 415 (500-1)		960-1 1/8 415 (500-1 1/8)	NA
C CIRCLING	1040-1 495 (500-1)		1080-1 1/2 535 (600-1 1/2)	NA

SC-1, 05 SEP 2024 to 03 OCT 2024

SC-1, 05 SEP 2024 to 03 OCT 2024