

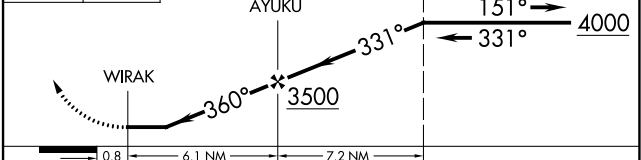
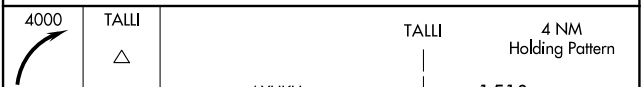
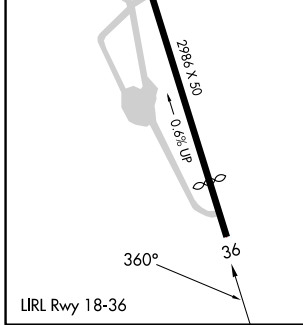
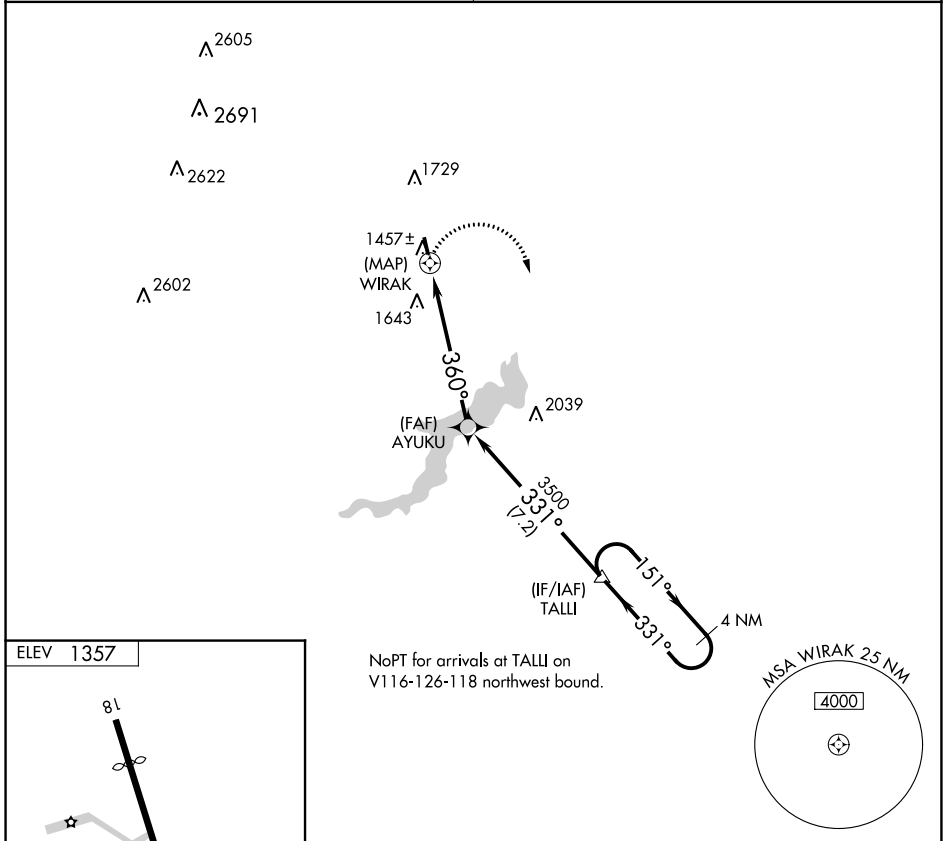
APP CRS 360°	Rwy Idg TDZE Apt Elev	N/A N/A 1357
------------------------	-----------------------------	---

RNAV (GPS)-B
CHERRY RIDGE (N30)

NA DME/DME RNP-0.3 NA. Procedure NA at night. Obtain local altimeter setting on CTAF; when not received, use Wilkes-Barre/Scranton Intl altimeter setting, and increase MDA 320 feet and Cat A visibility 1/4 mile.

MISSED APPROACH: Climbing right turn to 4000 direct TALLI and hold.

WILKES-BARRE APP CON **120.95 256.7** UNICOM **122.8 (CTAF)**



CATEGORY	A	B	C	D
CIRCLING	2080-1 723 (800-1)		NA	

NE-4, 03 OCT 2024 to 31 OCT 2024

NE-4, 03 OCT 2024 to 31 OCT 2024