

APP CRS 166°	Rwy Idg TDZE Apt Elev	N/A N/A 7838
------------------------	-----------------------------	---

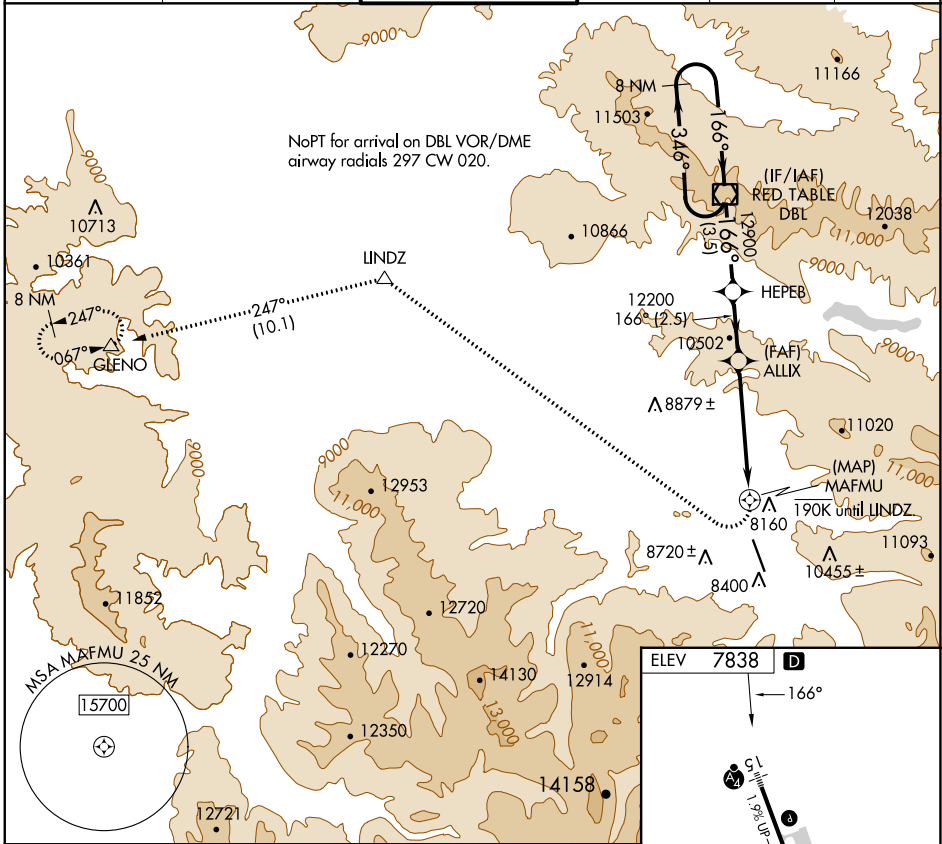
RNAV (GPS)-F

ASPEN-PITKIN COUNTY/SARDY FLD (ASE)

When local altimeter setting not received, procedure NA.
 DME/DME RNP-0.3 NA. Visibility reduction by helicopters NA.
 Procedure NA at night. Circling NA for Cat C southwest of Rwy 15-33.

MISSED APPROACH: Climbing right turn to 14000 direct LINDZ and on track 247° to GLENO and hold.

ATIS 120.4	ASPEN APP CON ★ 123.8 288.3	ASPEN TOWER ★ 118.85 (CTAF) 0 288.3	GND CON 121.9	CLNC DEL 123.75	UNICOM 122.95
----------------------	---------------------------------------	---	-------------------------	---------------------------	-------------------------



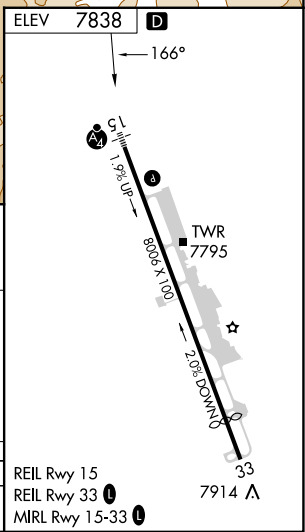
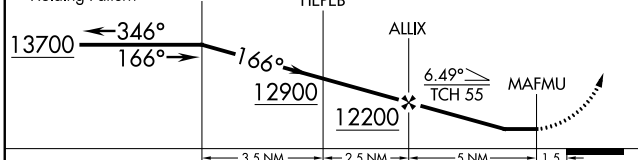
SW-1, 31 OCT 2024 to 28 NOV 2024

SW-1, 31 OCT 2024 to 28 NOV 2024

VGSI and descent angles not coincident (VGSI Angle 3.50/TCH 55).

14000	LINDZ	tr 247°	GLENO
	△		△

8 NM Holding Pattern DBL VOR/DME HEPEB



CATEGORY	A	B	C	D
CIRCLING	10200-1¼ 2362 (2400-1¼)	10220-1¾ 2382 (2400-1¾)	10960-3 3122 (3200-3)	NA

REIL Rwy 15
 REIL Rwy 33
 MIRL Rwy 15-33