

WAAS CH 99304 W22A	APP CRS 227°	Rwy Idg 5000 TDZE 1642 Apt Elev 1642
--	------------------------	---

RNAV (GPS) RWY 22

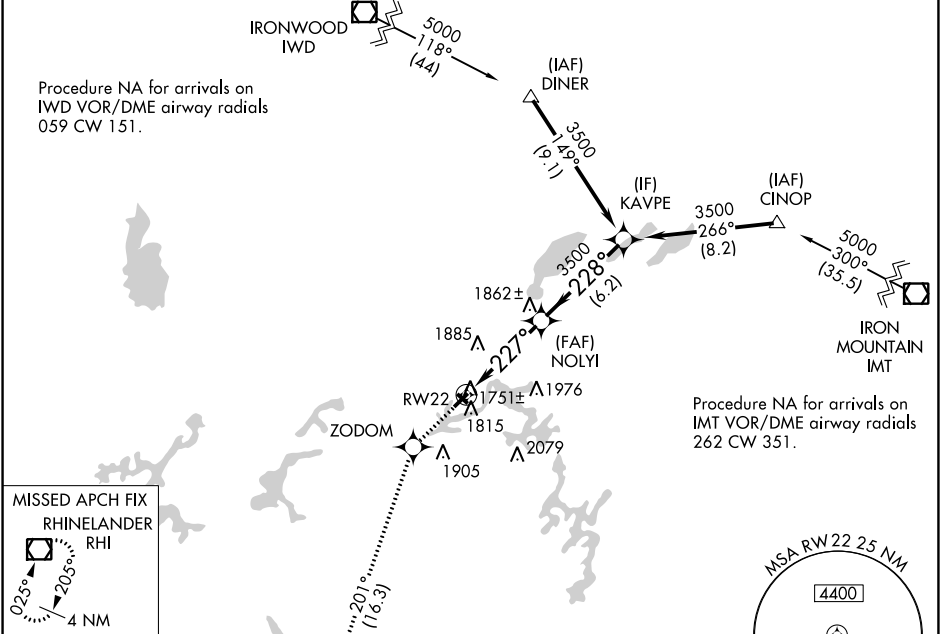
EAGLE RIVER UNION (EGV)

RNP APCH.

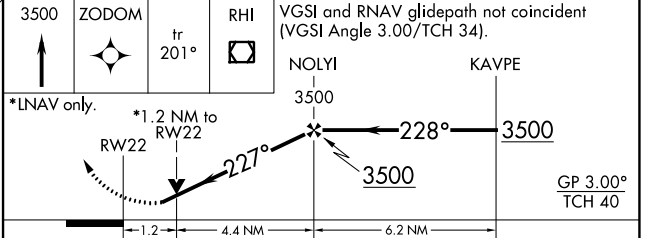
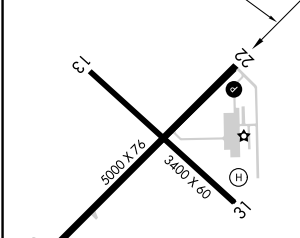
Baro-VNAV and VDP NA when using Minocqua-Woodruff altimeter setting. For uncompensated Baro-VNAV systems, LNAV/VNAV NA below -18°C or above 45°C. When local altimeter setting not received, use Minocqua-Woodruff altimeter setting and increase LPV DA to 2059, LNAV/VNAV DA to 2085, and all MDAs 60 feet. Increase Circling Cat C/D visibility ¼ SM. Rwy 22 helicopter visibility reduction below ¼ SM NA.

MISSED APPROACH:
Climb to 3500 direct ZODOM and via track 201° to RHI VOR/DME and hold.

AWOS-3 118.325	MINNEAPOLIS CENTER 133.65 281.5	UNICOM 122.8 (CTAF)
--------------------------	---	-------------------------------



ELEV 1642	TDZE 1642
-----------	-----------



CATEGORY	A	B	C	D
LPV DA		2012-1¼	370 (400-1¼)	
LNAV/VNAV DA		2038-1½	396 (400-1½)	
LNAV MDA	2040-1	398 (400-1)	2040-1½ 398 (400-1½)	2040-1¼ 398 (400-1¼)
CIRCLING	2120-1	478 (500-1)	2260-1¾ 618 (700-1¾)	2340-2¼ 698 (700-2¼)

REIL Rwy 4 and 22
MIRL Rwy 4-22 and 13-31

EC-3, 05 SEP 2024 to 03 OCT 2024

EC-3, 05 SEP 2024 to 03 OCT 2024