

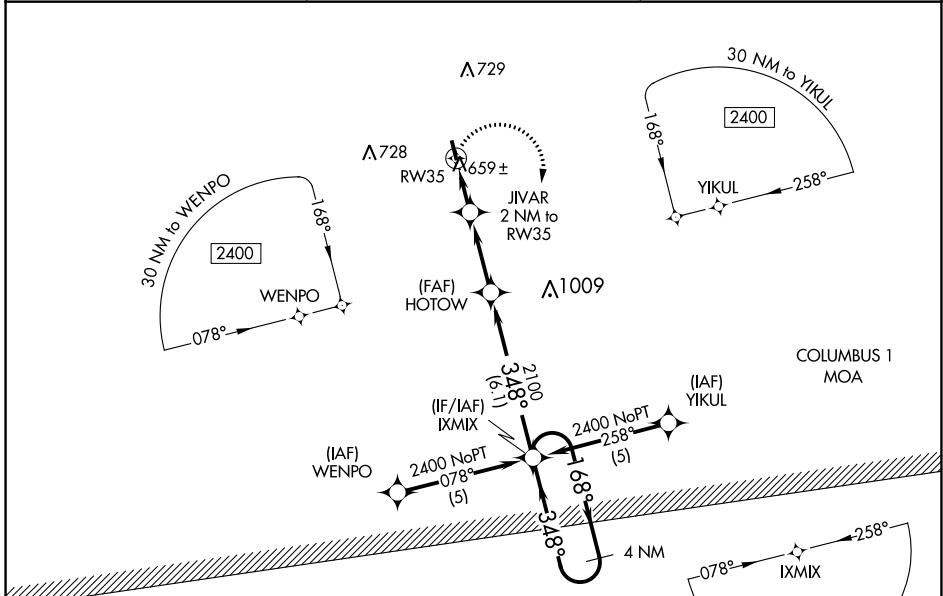
APP CRS	Rwy Idg	3613
348°	TDZE	463
	Apt Elev	463

RNAV (GPS) RWY 35

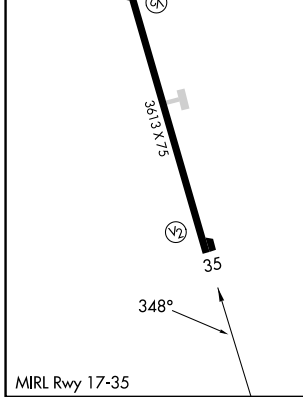
LAMAR COUNTY (M55)

RNP APCH.	Use Columbus AFB altimeter setting; when not received use Golden Triangle Rgnl altimeter setting and increase all MDA 40 feet and Circling Cats C/D visibility ¼ mile. Procedure NA at night. Rwy 35 helicopter visibility reduction below 1 SM NA.	MISSED APPROACH: Climbing right turn to 2400 direct IXMIX and hold.
▼ NA		

KCBM ATIS* 115.2 273.5	COLUMBUS APP CON* 126.075 239.25	CTAF 122.9
----------------------------------	--	----------------------



ELEV 463	TDZE 463
----------	----------



2400	IXMIX	Visual Segment - Obstacles.	4 NM Holding Pattern
RW35		HOTOW	
JIVAR 2 NM to RW35		IXMIX	
1120		2100	
2 NM		3 NM	
348°		168°	
348°		2400	
CATEGORY	A	B	C
LNAV MDA	1000-1	537 (600-1)	1000-1½ 537 (600-1½)
CIRCLING	1100-1	637 (700-1)	1180-2 717 (800-2)
			D
			1000-1¾ 537 (600-1¾)
			1180-2½ 717 (800-2½)

SE-4, 31 OCT 2024 to 28 NOV 2024

SE-4, 31 OCT 2024 to 28 NOV 2024