

WAAS CH <b>77606</b> <b>W04A</b>	APP CRS <b>038°</b>	Rwy Idg TDZE <b>316</b> Apt Elev <b>316</b>	<b>5000</b> <b>316</b> <b>316</b>
--	------------------------	---	---

# RNAV (GPS) RWY 4

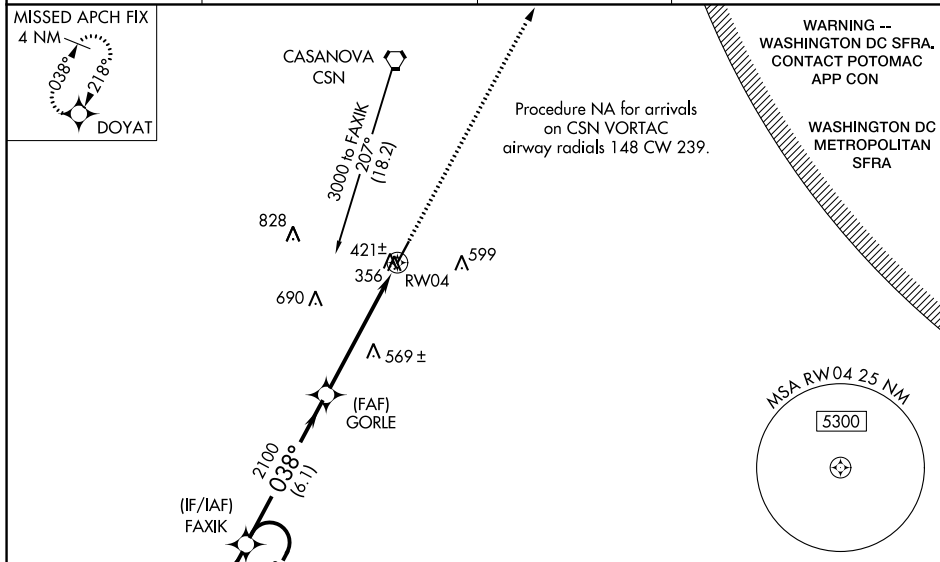
CULPEPER RGNL (CJR)

RNP APCH.

⚠ When VGSI inoperative, procedure NA at night. Baro-VNAV NA when using Washington Dulles Intl altimeter setting. For uncompensated Baro-VNAV systems, LNAV/VNAV NA below -15°C or above 48°C. Rwy 4 helicopter visibility reduction below 1 SM NA. When local altimeter setting not received, use Washington Dulles Intl altimeter setting and increase all DAs 73 feet, all MDAs 80 feet, LPV and LNAV/VNAV all Cats visibility ¼ mile, LNAV Cat D visibility ¼ mile.

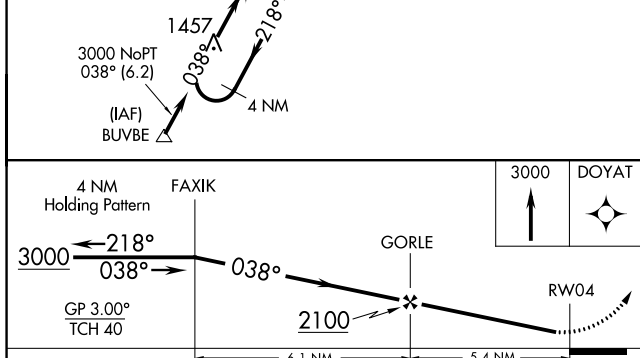
MISSED APPROACH: Climb to 3000 direct DOYAT and hold.

AWOS-3 <b>119.325</b>	POTOMAC APP CON <b>128.525 306.925</b>	CLNC DEL <b>121.6</b>	UNICOM <b>123.075 (CTAF)</b> <b>1</b>
--------------------------	---	--------------------------	--

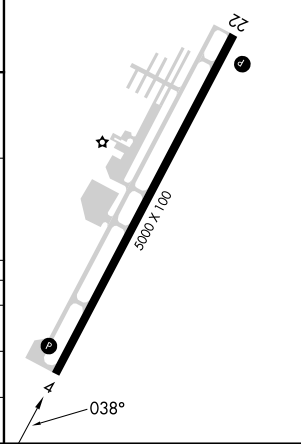


NE-3, 03 OCT 2024 to 31 OCT 2024

NE-3, 03 OCT 2024 to 31 OCT 2024



ELEV 316	TDZE 316
REIL Rwy 4 and 22 <b>1</b>	
MIRL Rwy 4-22 <b>1</b>	



CATEGORY	A	B	C	D
LPV DA	610-1 294 (300-1)			
LNAV/VNAV DA	833-1¾ 517 (600-1¾)			
LNAV MDA	820-1 504 (600-1)		820-1½ 504 (600-1½)	