

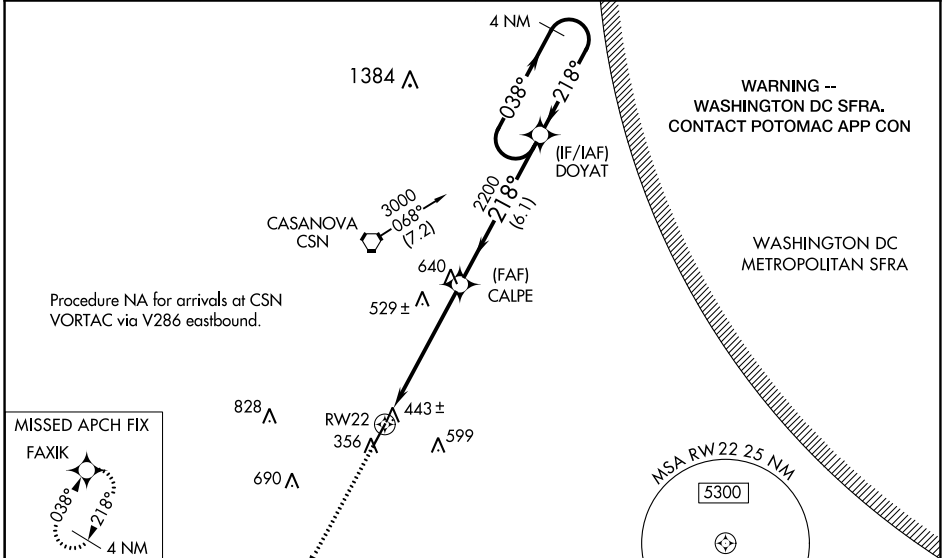
WAAS CH 56306 W22A	APP CRS 218°	Rwy Idg TDZE Apt Elev	5000 315 316
--	------------------------	-----------------------------	---

RNAV (GPS) RWY 22

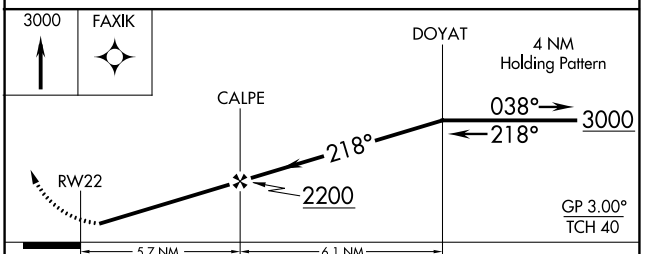
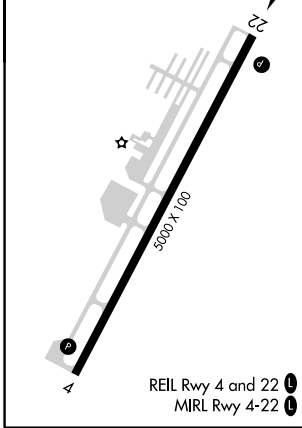
CULPEPER RGNL (CJR)

RNP APCH.		<p>⚠ When VGSI inoperative, procedure NA at night. Baro-VNAV NA when using Washington Dulles Intl altimeter setting. For uncompensated Baro-VNAV systems, LNAV/VNAV NA below -15°C or above 48°C. Rwy 22 helicopter visibility reduction below 1 SM NA. When local altimeter setting not received, use Washington Dulles Intl altimeter setting and increase all DAs/MDAs 80 feet, LPV and LNAV/VNAV all Cats visibility ¼ mile, LNAV Cats C and D visibility ¼ mile.</p>	
<p>MISSED APPROACH: Climb to 3000 direct FAXIK and hold.</p>			

AWOS-3 119.325	POTOMAC APP CON 128.525 306.925	CLNC DEL 121.6	UNICOM 123.075 (CTAF) 📞
--------------------------	---	--------------------------	--



ELEV 316	TDZE 315
----------	----------



CATEGORY	A	B	C	D
LPV DA	657-1¼		342 (400-1¼)	
LNAV/VNAV DA	703-1½		388 (400-1½)	
LNAV MDA	800-1	485 (500-1)	800-1¼ 485 (500-1¼)	800-1½ 485 (500-1½)

NE-3, 08 AUG 2024 to 05 SEP 2024

NE-3, 08 AUG 2024 to 05 SEP 2024