

| | | |
|--|------------------------|---|
| WAAS CH 86524 W27A | APP CRS 268° | Rwy Idg 5000 TDZE 2925 Apt Elev 2933 |
|--|------------------------|---|

RNAV (GPS) RWY 27

GARRETT COUNTY (2G4)

RNP APCH - GPS.

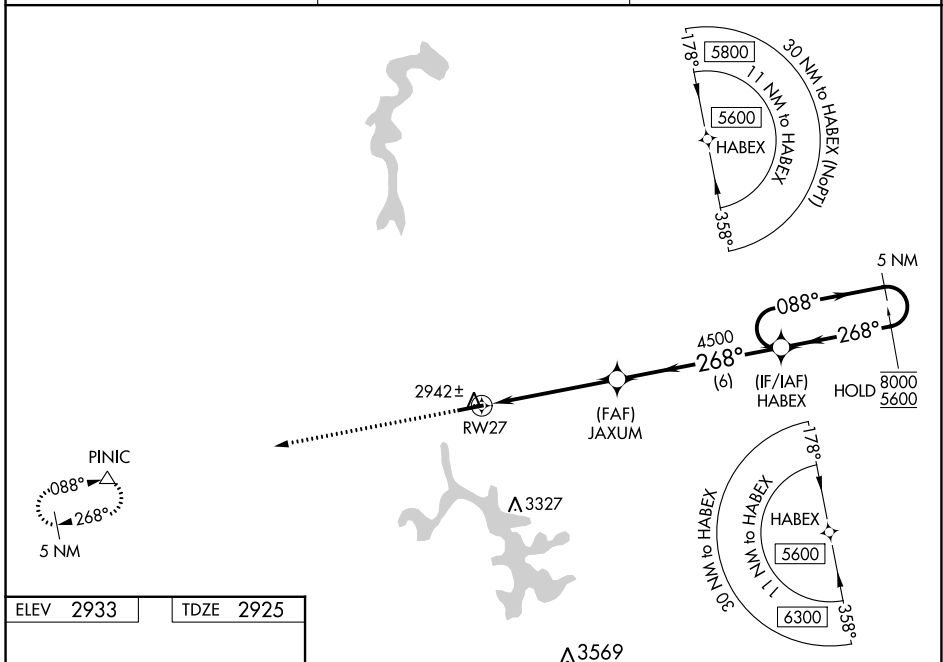
⚠ For uncompensated Baro-VNAV systems, LNAV/VNAV NA below -20°C or above 54°C. Baro-VNAV and VDP NA when using MGW altimeter setting. When local altimeter setting not received, use MGW altimeter setting and increase LPV DA to 3425 feet and all visibilities 3/8 SM. Increase LNAV/VNAV DA to 3475 feet and all visibilities 3/8 SM; increase all MDAs 300 feet and LNAV visibility Cat C 3/8 SM, and Circling visibility Cat C 1 SM.

MISSED APPROACH:
Climb 5700 direct
PINIC and hold.

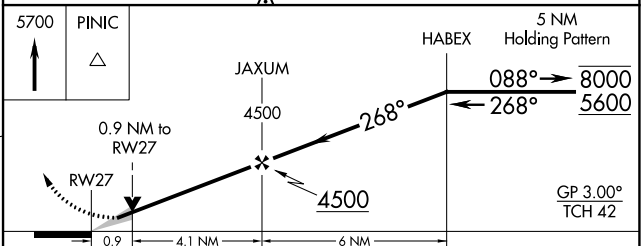
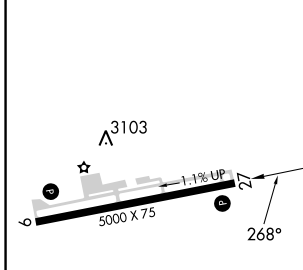
AWOS-3
120.125

CLARKSBURG APP CON ★
119.425 284.65

UNICOM
123.0 (CTAF) ①



| | |
|-----------|-----------|
| ELEV 2933 | TDZE 2925 |
|-----------|-----------|



| CATEGORY | A | B | C | D |
|-------------------|-----------------------|-----------------------|-------------------------|----|
| LPV DA | | 3125-1 | 200 (200-1) | NA |
| LNAV/VNAV DA | | 3175-1 | 250 (300-1) | NA |
| LNAV MDA | | 3200-1 | 275 (300-1) | NA |
| C CIRCLING | 3380-1 447 (500-1) | 3400-1 467 (500-1) | 3500-1½ 567 (600-1½) | NA |

REIL Rwy 9 and 27 ①
MIRL Rwy 9-27 ①

NE-3, 31 OCT 2024 to 28 NOV 2024

NE-3, 31 OCT 2024 to 28 NOV 2024