

WAAS CH <b>48832</b> <b>W36A</b>	APP CRS <b>356°</b>	Rwy Idg TDZE <b>425</b> Apt Elev <b>425</b>	<b>6500</b>
--	------------------------	---	-------------

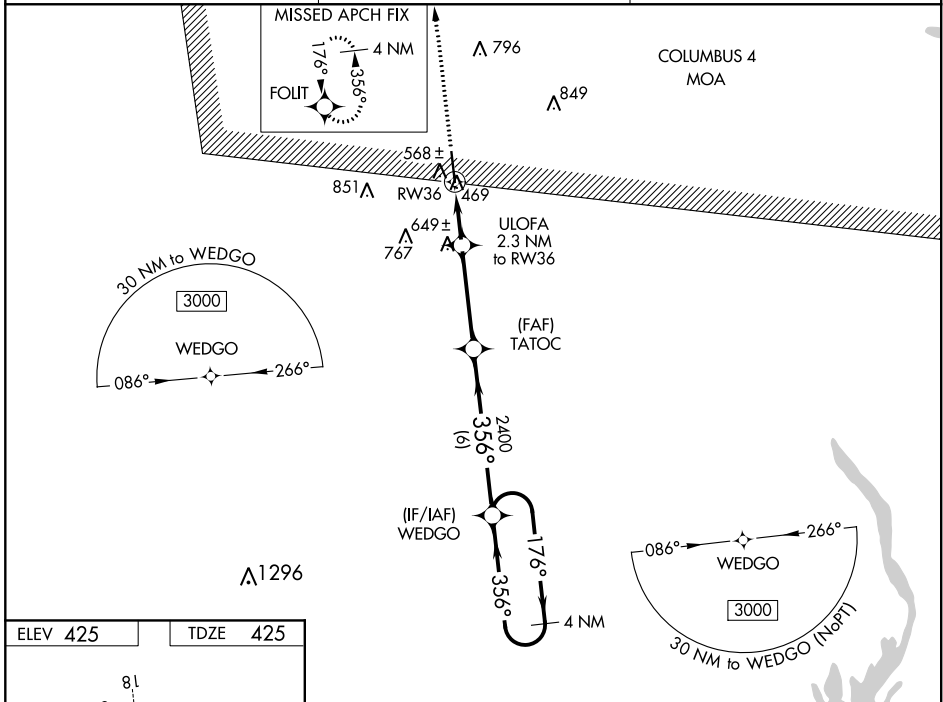
# RNAV (GPS) RWY 36

ROSCOE TURNER (CRX)

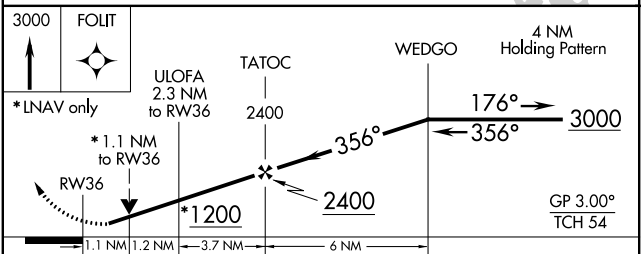
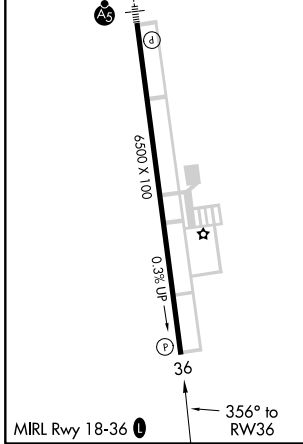
**▼** For uncompensated Baro-VNAV systems, LNAV/VNAV NA below -15°C (5°F) or above 54°C (130°F). DME/DME RNP-0.3 NA. When local altimeter setting not received, use Tupelo altimeter setting and increase all DA 103 feet, and all MDA 120 feet, increase LPV, LNAV/VNAV all Cats visibility 3/8 mile, and LNAV Cats C/D and Circling Cat D visibility 1/4 mile. Baro-VNAV and VDP NA when using Tupelo altimeter setting. Rwy 36 helicopter visibility reduction below 3/4 SM NA.

**MISSED APPROACH:**  
Climb to 3000 direct FOLIT and hold.

AWOS-3PT <b>118.675</b>	MEMPHIS CENTER <b>135.9 273.55</b>	UNICOM <b>122.8 (CTAF) 0</b>
----------------------------	---------------------------------------	---------------------------------



ELEV 425	TDZE 425
----------	----------



CATEGORY	A	B	C	D
LPV DA		696-7/8	271 (300-7/8)	
LNAV/VNAV DA		729-1	304 (400-1)	
LNAV MDA	820-1	395 (400-1)	820-1 1/8	395 (400-1 1/8)
<b>CIRCLING</b>	900-1	475 (500-1)	1080-1 3/4 655 (700-1 3/4)	1160-2 1/4 735 (600-2 1/4)