

LOC I-HSA	APP CRS	Rwy Idg	<b>8498</b>
<b>110.35</b>	<b>182°</b>	TDZE	<b>23</b>
		Apt Elev	<b>23</b>

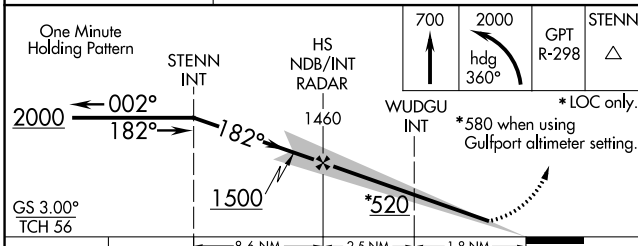
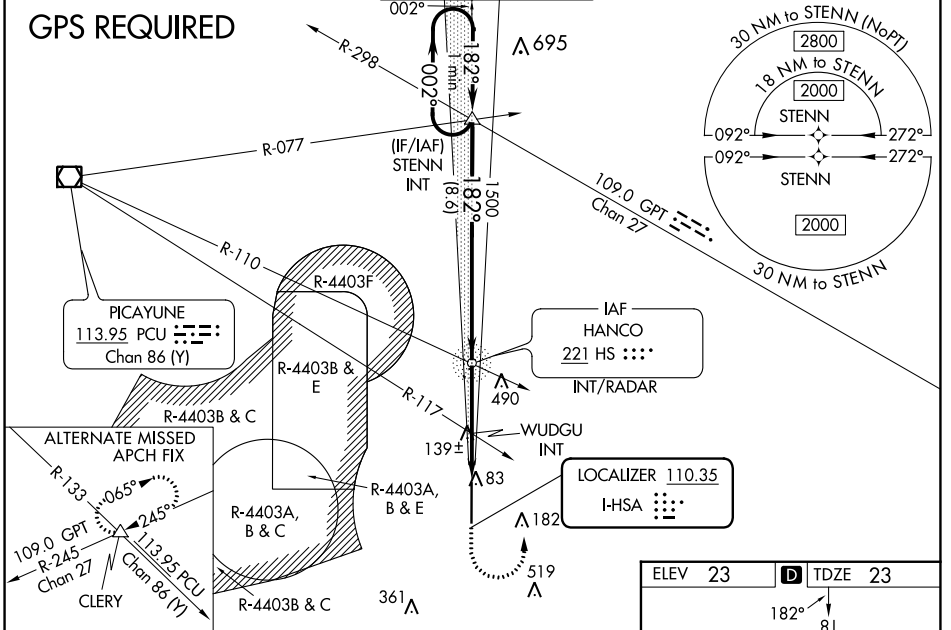
# ILS Y or LOC Y RWY 18

STENNIS INTL (HSA)

**⚠** Circling NA for Cat E west of Rwy 18-36. When local altimeter setting not received, use Gulfport altimeter setting; increase DA to 270 feet; increase all MDA 60 feet and S-LOC 18 Cats C/D/E visibility 1/8 mile, Circling Cat C visibility 1/4 mile and Cats D/E visibility 1/4 mile. WUDGU fix minimums: increase S-LOC 18 Cats C/D/E visibility 1/8 mile, and Circling Cats D/E visibility 1/4 mile. For inop MALS, increase S-ILS 18 Cat E visibility to 3/4 mile, and S-LOC 18 Cats C/D/E visibility to 1 1/8 mile. WUDGU fix minimums: increase S-LOC 18 Cats C/D/E visibility to 1 mile. For inop MALS when using Gulfport altimeter setting, increase S-ILS 18 Cat E visibility to 3/4 mile and S-LOC 18 Cat E visibility to 1 1/8 mile. WUDGU fix minimums: increase S-LOC 18 Cat E visibility to 1 1/4 mile.

**MISSED APPROACH:** Climb to 700 then climbing left turn to 2000 on heading 360° and on GPT VORTAC R-298 to STENN and hold.

AWOS-3PT <b>118.375</b>	GULFPORT APP CON★ <b>124.6 354.1</b> (130°-309°) <b>127.5 254.25</b> (310°-129°)	STENNIS TOWER★ <b>127.15</b> (CTAF) <b>229.4</b>	GND CON <b>121.725 229.4</b>	UNICOM <b>122.95</b>
----------------------------	--	---	---------------------------------	-------------------------



ELEV 23	TDZE 23
REIL Rwy 36	HIRL Rwy 18-36
FAF to MAP 4.3 NM	
Knots	60 90 120 150 180
Min:Sec	4:18 2:52 2:09 1:43 1:26

CATEGORY	A	B	C	D	E
S-ILS 18	223-1/2 200 (200-1/2)				
S-LOC 18	520-1/2	497 (500-1/2)	520-1 497 (500-1)		
<b>C</b> CIRCLING	520-1	497 (500-1)	520-1 1/2	820-2 1/2	820-2 3/4
WUDGU FIX MINIMUMS (DUAL VOR RECEIVERS REQUIRED)					
S-LOC 18	400-1/2	377 (400-1/2)	400-5/8 377 (400-5/8)		
<b>C</b> CIRCLING	480-1	457 (500-1)	520-1 1/2	820-2 1/2	820-2 3/4
			497 (500-1 1/2)	797 (800-2 1/2)	797 (800-2 3/4)

SC-4, 31 OCT 2024 to 28 NOV 2024

SC-4, 31 OCT 2024 to 28 NOV 2024