

WAAS CH 82618 W15A	APP CRS 151°	Rwy Idg TDZE Apt Elev	6001 121 121
--	------------------------	-----------------------------	---

RNAV (GPS) RWY 15

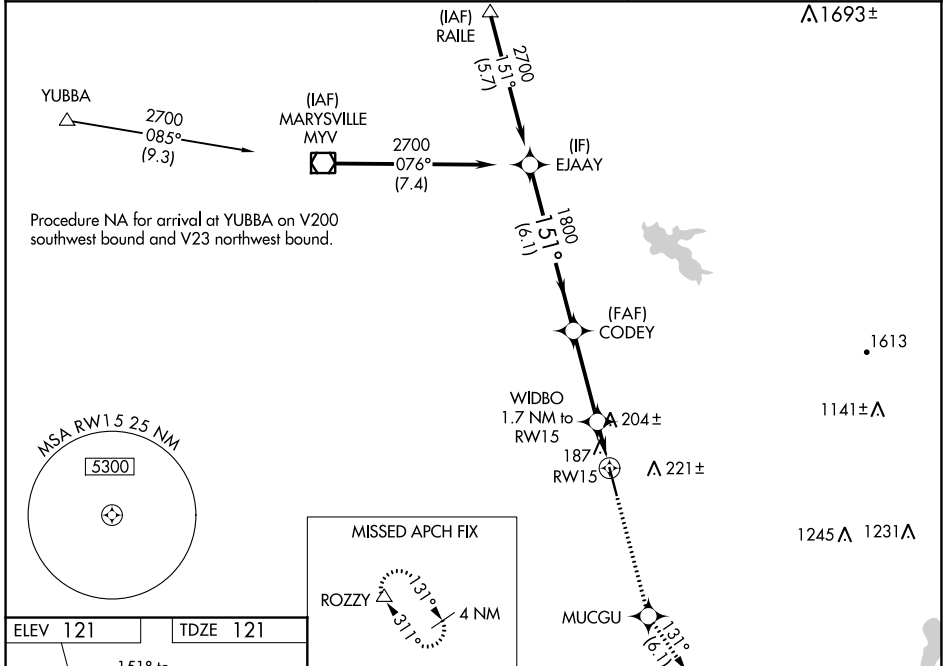
LINCOLN RGNL/KARL HARDER FLD (LHM)

RNP APCH.

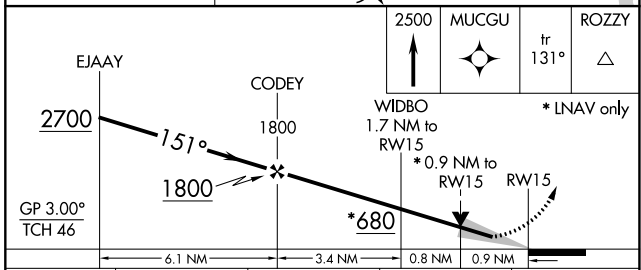
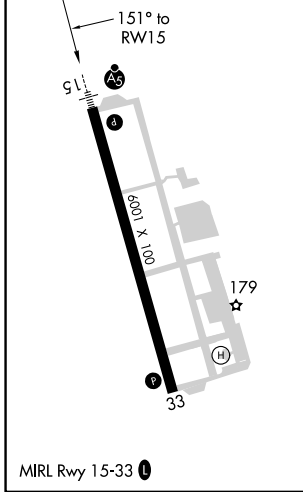
▼ For uncompensated Baro-VNAV systems, LNAV/VNAV NA below -15°C or above 48°C.
 ▲ VDP and Baro-VNAV NA when using Beale AFB altimeter setting. When local altimeter setting not received, use Beale AFB altimeter setting and increase LPV DA to 361 feet; increase LNAV/VNAV DA to 492 feet; increase all MDAs 40 feet and increase Circling Cat D visibility ¼ SM. For inop ALS when using Beale AFB altimeter setting, increase LNAV Cat D visibility to 1¼.

MALSR MISSED APPROACH: Climb to 2500 direct MUCGU and on track 131° to ROZZY and hold.

AWOS-3 124.25	NORCAL APP CON 125.4 259.1	UNICOM 123.0 (CTAF)
-------------------------	--------------------------------------	-------------------------------



ELEV 121	TDZE 121
----------	----------



CATEGORY	A	B	C	D
LPV DA		321-½	200 (200-½)	
LNAV/VNAV DA		452-¾	331 (400-¾)	
LNAV MDA		460-½	339 (400-½)	460-1 339 (400-1)
CIRCLING	520-1 399 (400-1)	580-1 459 (500-1)	600-1½ 479 (500-1½)	760-2 639 (700-2)

SW-2, 03 OCT 2024 to 31 OCT 2024

SW-2, 03 OCT 2024 to 31 OCT 2024