

WAAS CH <b>78005</b> <b>W05A</b>	APP CRS <b>049°</b>	Rwy Idg TDZE <b>1027</b> Apt Elev <b>1072</b>	<b>3995</b>
--	------------------------	---	-------------

# RNAV (GPS) RWY 5

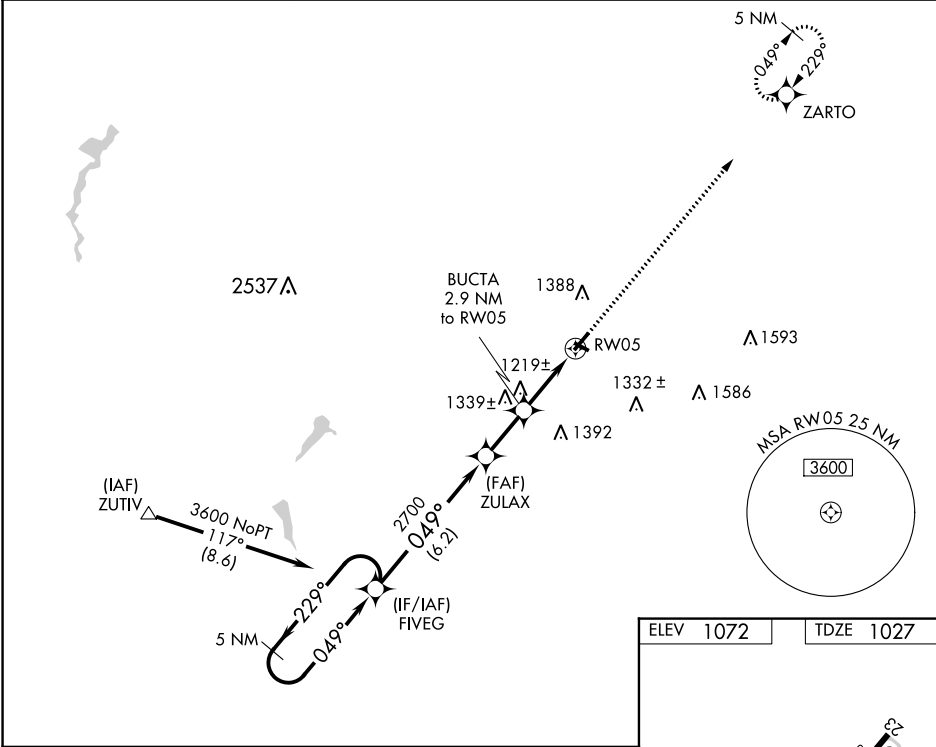
NEW CASTLE MUNI (UCP)

RNP APCH.

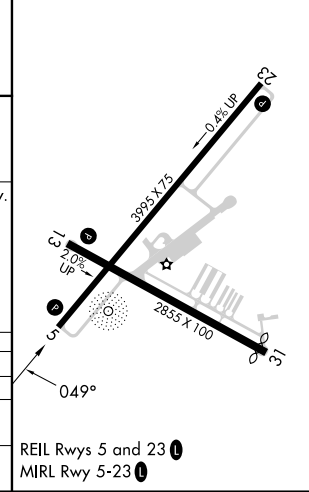
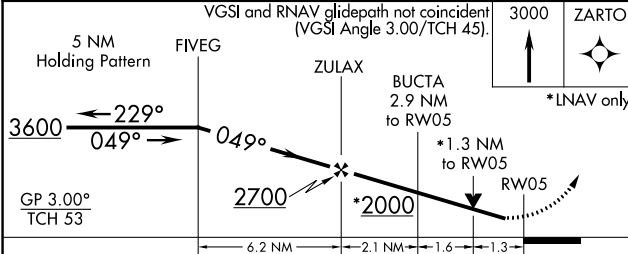
▼ VDP NA when using Youngstown/Warren Rgnl altimeter setting. Rwy 5 helicopter visibility reduction below 3/4 SM NA. When local altimeter setting not received, use Youngstown/Warren Rgnl altimeter setting and increase all DA 61 feet and all MDA 80 feet; increase LNAV Cat C and Circling Cat C visibility 1/4 SM.

MISSED APPROACH: Climb to 3000 direct ZARTO and hold.

AWOS-3PT <b>124.175</b>	YOUNGSTOWN APP CON★ <b>133.95 322.3</b>	UNICOM <b>123.0 (CTAF) 0</b>
----------------------------	--	---------------------------------



ELEV 1072	TDZE 1027
-----------	-----------



CATEGORY	A	B	C	D
LPV DA	1307-1		280 (300-1)	NA
LNAV MDA	1480-1	453 (500-1)	1480-1 <sup>3</sup> / <sub>8</sub> 453 (500-1 <sup>3</sup> / <sub>8</sub> )	NA
CIRCLING	1600-1 528 (600-1)	1700-1 628 (700-1)	1700-1 <sup>3</sup> / <sub>4</sub> 628 (700-1 <sup>3</sup> / <sub>4</sub> )	NA

REIL Rwy 5 and 23 0  
MIRL Rwy 5-23 0

NE-4, 03 OCT 2024 to 31 OCT 2024

NE-4, 03 OCT 2024 to 31 OCT 2024