

WAAS CH <b>45605</b> <b>W23A</b>	APP CRS <b>229°</b>	Rwy Idg TDZE Apt Elev	<b>3995</b> <b>1027</b> <b>1072</b>
--	------------------------	-----------------------------	---

# RNAV (GPS) RWY 23

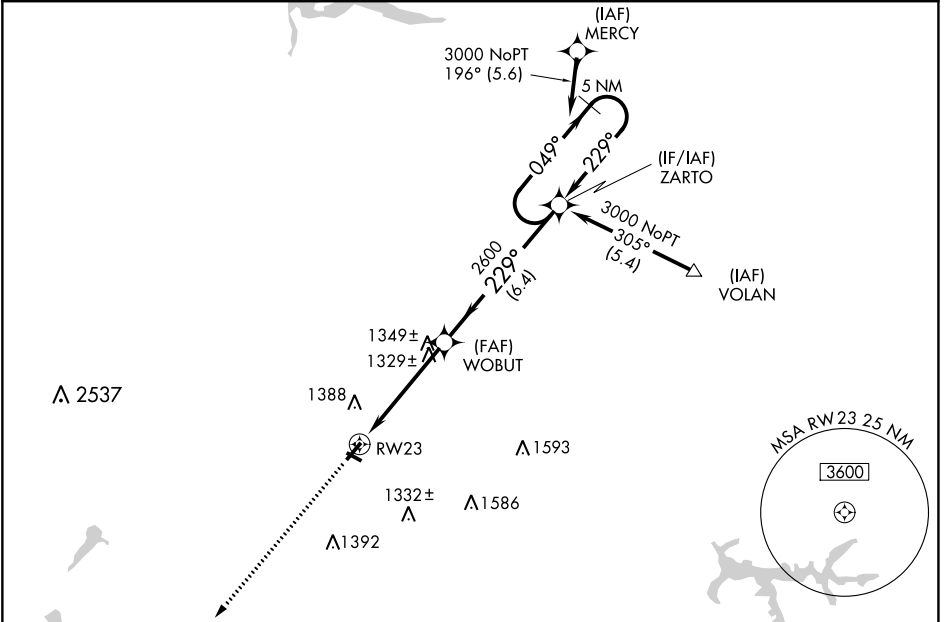
NEW CASTLE MUNI (UCP)

RNP APCH.

**⚠** VDP NA when using Youngstown/Warren Rgnl altimeter setting. When local altimeter setting not received, use Youngstown/Warren Rgnl altimeter setting and increase all DA 61 feet and all MDA 80 feet; increase LNAV Cat C and Circling Cat C visibility ¼ SM.

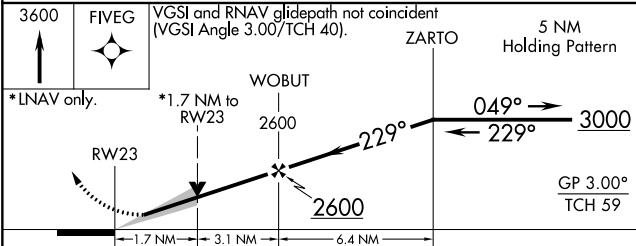
**MISSED APPROACH:**  
Climb to 3600 direct FIVEG and hold.

AWOS-3PT <b>124.175</b>	YOUNGSTOWN APP CON ★ <b>133.95 322.3</b>	UNICOM <b>123.0 (CTAF) ①</b>
----------------------------	---	---------------------------------

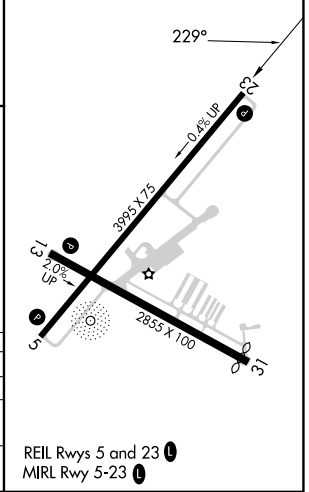


NE-4, 03 OCT 2024 to 31 OCT 2024

NE-4, 03 OCT 2024 to 31 OCT 2024



ELEV 1072	TDZE 1027
-----------	-----------



CATEGORY	A	B	C	D
LPV DA	1288-1 261 (300-1)			NA
LNAV MDA	1580-1	553 (600-1)	1580-1½ 553 (600-1½)	NA
CIRCLING	1600-1 528 (600-1)	1700-1 628 (700-1)	1700-1¾ 628 (700-1¾)	NA

REIL Rwy 5 and 23 ①  
MIRL Rwy 5-23 ①