

APP CRS **116°**
 Rwy Idg **4304**
 TDZE **869**
 Apt Elev **869**

RNAV (GPS) RWY 11

LUCE COUNTY (ERY)

RNP APCH - GPS.

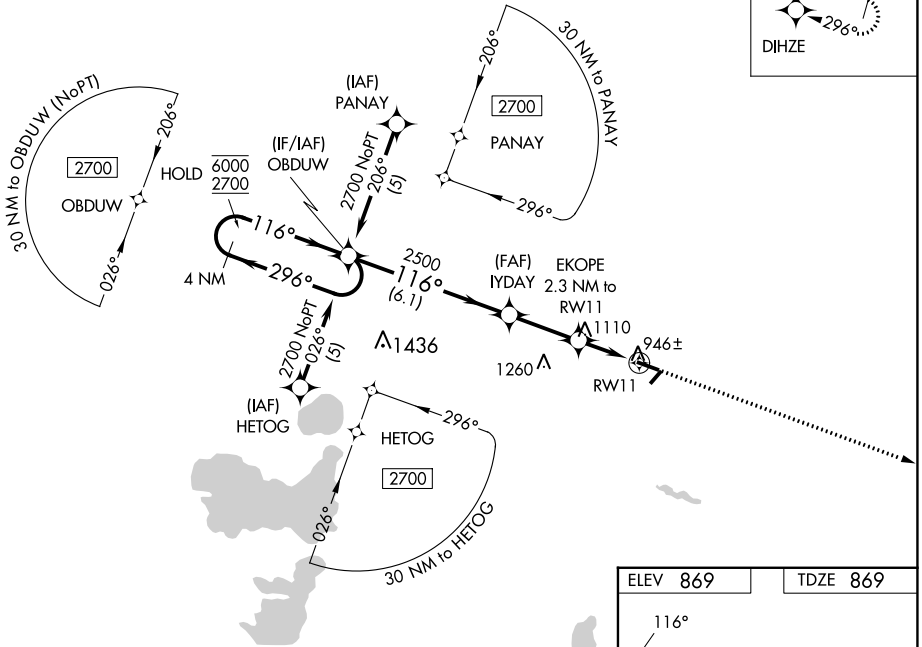
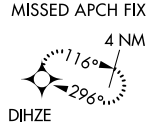
⚠ Circling NA to Rwys 4 and 22. Rwy 11 helicopter visibility reduction below 3/4 SM NA.
⚠ For uncompensated Baro-VNAV systems, LNAV/VNAV NA below -16°C or above 54°C.

MISSED APPROACH:
 Climb to 2700 direct
 DIHZE and hold.

AWOS-3P
119.525

MINNEAPOLIS CENTER
134.6 354.05

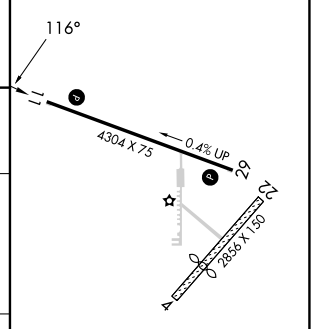
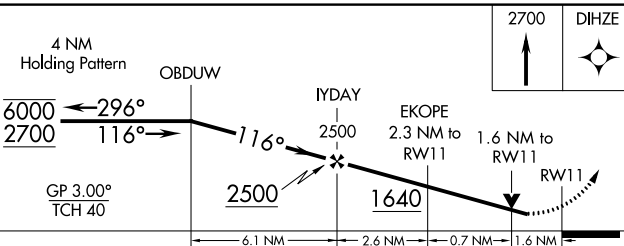
UNICOM
122.8 (CTAF) 0



EC-1, 05 SEP 2024 to 03 OCT 2024

EC-1, 05 SEP 2024 to 03 OCT 2024

ELEV 869 TDZE 869



CATEGORY	A	B	C	D
LNAV/DA VNAV	1259-1 1/8		390 (400-1 1/8)	
LNAV MDA	1420-1	551 (600-1)	1420-1 5/8	551 (600-1 5/8)
CIRCLING	1420-1	551 (600-1)	1460-1 5/8 591 (600-1 5/8)	1560-2 1/4 691 (700-2 1/4)

MIRL Rwy 11-29 0
 REIL Rws 11 and 29 0