

WAAS CH 70423 W35A	APP CRS 352°	Rwy Idg 4305 TDZE 1616 Apt Elev 1616
--	------------------------	---

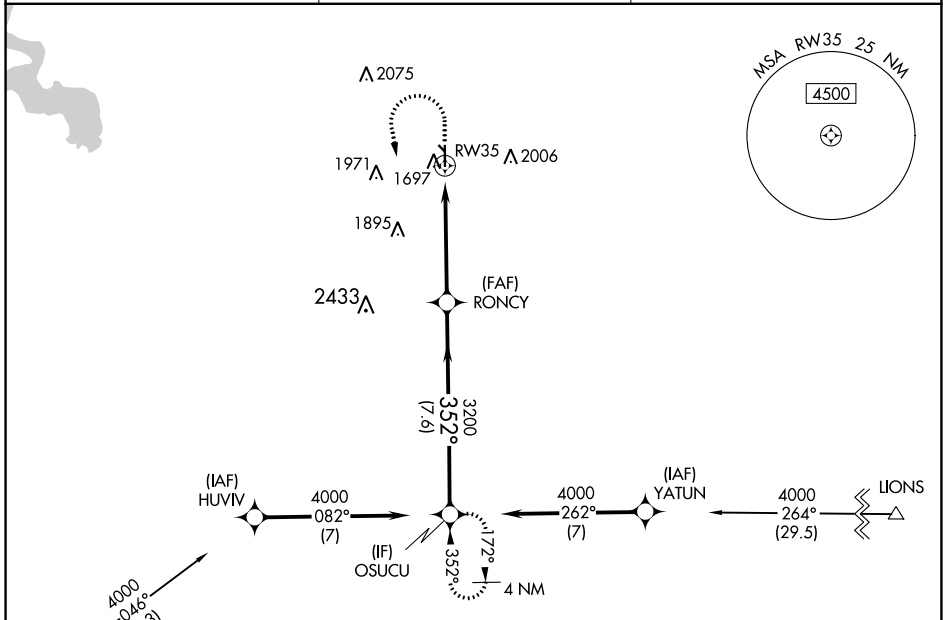
RNAV (GPS) RWY 35

CLINTON RGNL (CLK)

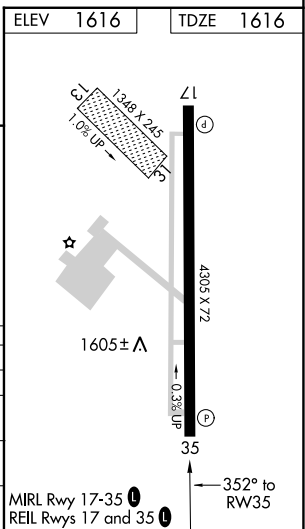
⚠ DME/DME RNP-0.3 NA. For uncompensated Baro-VNAV systems, LNAV/VNAV NA below -12°C (11°F) or above 54°C (130°F). Circling NA to Rwy 13 and 31. When local altimeter setting not received, use Weatherford altimeter setting; Increase DA to 1902 and all visibilities ½ mile; increase all MDA 40 feet and visibility Cat C ¼ mile. Baro-VNAV and VDP NA when using Weatherford altimeter setting.

MISSED APPROACH: Climb to 2400 then climbing left turn to 4000 direct OSUCU and hold.

AWOS-3 119.225	FORT WORTH CENTER 128.4 269.37	UNICOM 122.8 (CTAF) 0
--------------------------	--	---------------------------------



ELEV 1616	TDZE 1616			
2400	4000	OSUCU	VGSI and RNAV glidepath not coincident (VGSI Angle 3.00/TCH 40).	OSUCU
<p>*LNAV only. \uparrow 1.3 NM to RW35</p> <p>RW35 \swarrow 3200 \searrow 352° \rightarrow 4000</p> <p>GP 3.00° TCH 40</p> <p>1.3 NM 3.6 NM 7.6 NM</p>				
CATEGORY	A	B	C	D
LPV DA	1866-7/8	250 (300-7/8)		NA
LNAV/VNAV DA	1870-7/8	254 (300-7/8)		NA
LNAV MDA	2040-1	424 (500-1)	2040-1 1/4 424 (500-1 1/4)	NA
C CIRCLING	2100-1 484 (500-1)	2220-1 604 (700-1)	2320-2 704 (800-2)	NA



SC-1, 23 MAR 2023 to 20 APR 2023

SC-1, 23 MAR 2023 to 20 APR 2023