

WAAS CH <b>61335</b> <b>W35A</b>	APP CRS <b>348°</b>	Rwy Idg TDZE Apt Elev	<b>5002</b> <b>927</b> <b>936</b>
--	------------------------	-----------------------------	---

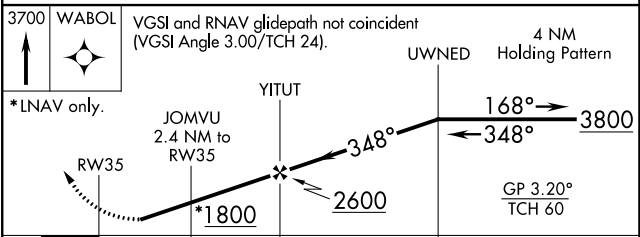
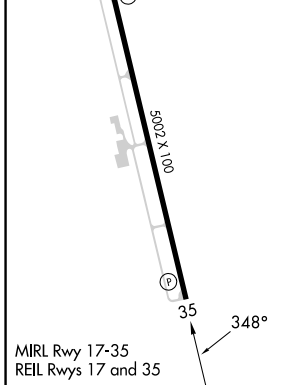
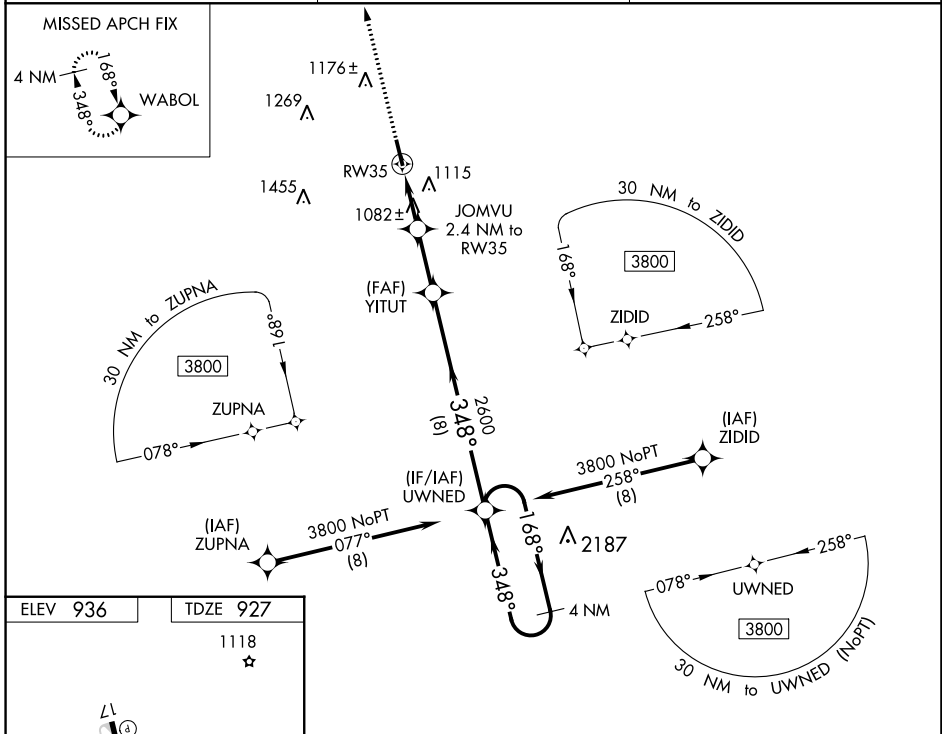
# RNAV (GPS) RWY 35

LAWRENCEBURG-LAWRENCE COUNTY (2M2)

**⚠** Circling Rwy 17 NA at night. For uncompensated Baro-VNAV systems, LNAV/VNAV NA below -16°C (5°F) or above 54°C (130°F). DME/DME RNP-0.3 NA. When local altimeter setting not received, use Huntsville Intl-Carl T Jones Fld altimeter setting and increase all DA 142 feet and all MDA 140 feet; increase LPV all Cats visibility ¼ mile, LNAV/VNAV all Cats visibility ⅓ mile. Rwy 17 helicopter visibility reduction below 1 SM NA. Rwy 35 helicopter visibility reduction below ¾ SM NA.

**⚠ NA** MISSED APPROACH: Climb to 3700 direct WABOL and hold.

AWOS-3 <b>120.175</b>	MEMPHIS CENTER <b>125.85 379.25</b>	UNICOM <b>122.8 (CTAF)</b>
--------------------------	--	-------------------------------



CATEGORY	A	B	C	D
LPV DA	1293-1 1/8	366 (400-1 1/8)		NA
LNAV/VNAV DA	1354-1 1/4	427 (500-1 1/4)		NA
LNAV MDA	1340-1	413 (500-1)		NA
<b>C</b> CIRCLING	1500-1	564 (600-1)		NA

SE-1, 31 OCT 2024 to 28 NOV 2024

SE-1, 31 OCT 2024 to 28 NOV 2024