

WAAS CH <b>61116</b> <b>W08A</b>	APP CRS <b>087°</b>	Rwy Idg TDZE Apt Elev	<b>4400</b> <b>894</b> <b>894</b>
--	------------------------	-----------------------------	---

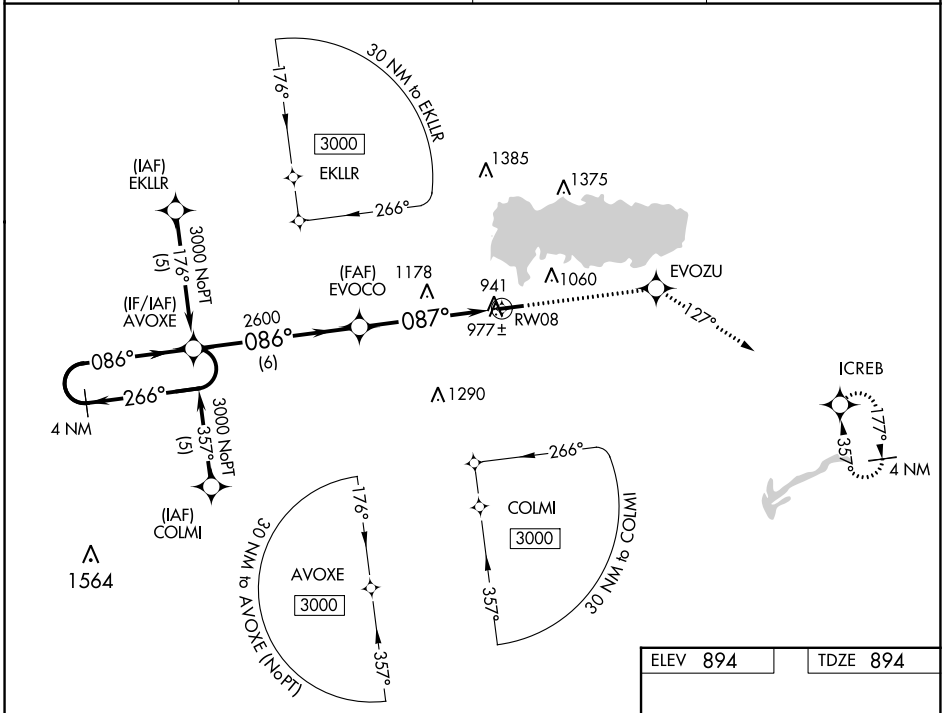
# RNAV (GPS) RWY 8

LAKEFIELD (CQA)

**NA** DME/DME RNP-0.3 NA. Visibility reduction by helicopters NA. Baro-VNAV NA. Use Wapakoneta altimeter setting. When not received use James M Cox Dayton Intl altimeter setting and increase all DA 73 feet and all MDA 80 feet; increase LPV Cats A/B/C visibility  $\frac{1}{4}$  mile, LNAV/VNAV Cats A/B/C visibility  $\frac{1}{2}$  mile and LNAV and Circling Cat C visibility  $\frac{1}{4}$  mile.

**MISSED APPROACH:** Climb to 3000 direct EVOZU and via track 127° to ICREB and hold.

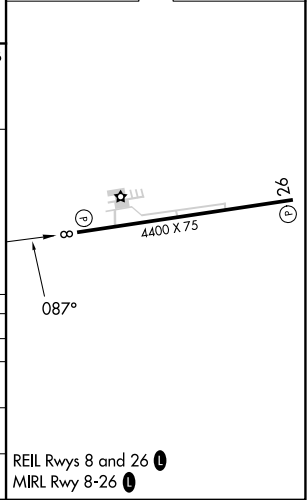
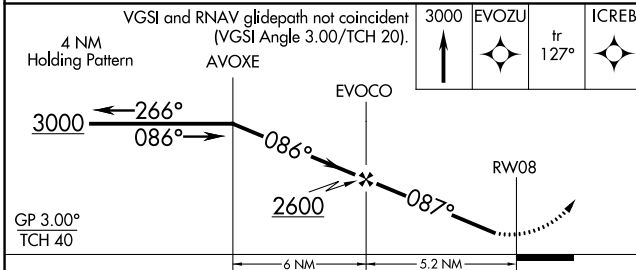
AXV AWOS-3PT <b>128.325</b>	COLUMBUS APP CON <b>134.45 352.05</b>	UNICOM <b>122.8 (CTAF)</b>	<b>123.3</b> <b>Q</b>
--------------------------------	--	-------------------------------	-----------------------



EC-2, 03 OCT 2024 to 31 OCT 2024

EC-2, 03 OCT 2024 to 31 OCT 2024

ELEV 894	TDZE 894
----------	----------



CATEGORY	A	B	C	D
LPV DA	1221-1 $\frac{1}{4}$	327 (400-1 $\frac{1}{4}$ )		NA
LNAV/VNAV DA	1278-1 $\frac{1}{4}$	384 (400-1 $\frac{1}{4}$ )		NA
LNAV MDA	1440-1	546 (600-1)	1440-1 $\frac{1}{2}$ 546 (600-1 $\frac{1}{2}$ )	NA
CIRCLING	1440-1	546 (600-1)	1480-1 $\frac{1}{2}$ 586 (600-1 $\frac{1}{2}$ )	NA

REIL Rwys 8 and 26 **Q**  
MIRL Rwy 8-26 **Q**

# RNAV (GPS) RWY 8

LAKEFIELD (CQA)