

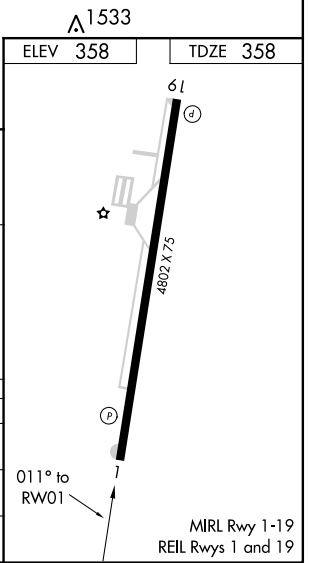
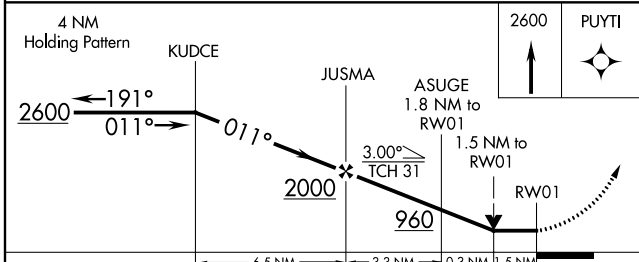
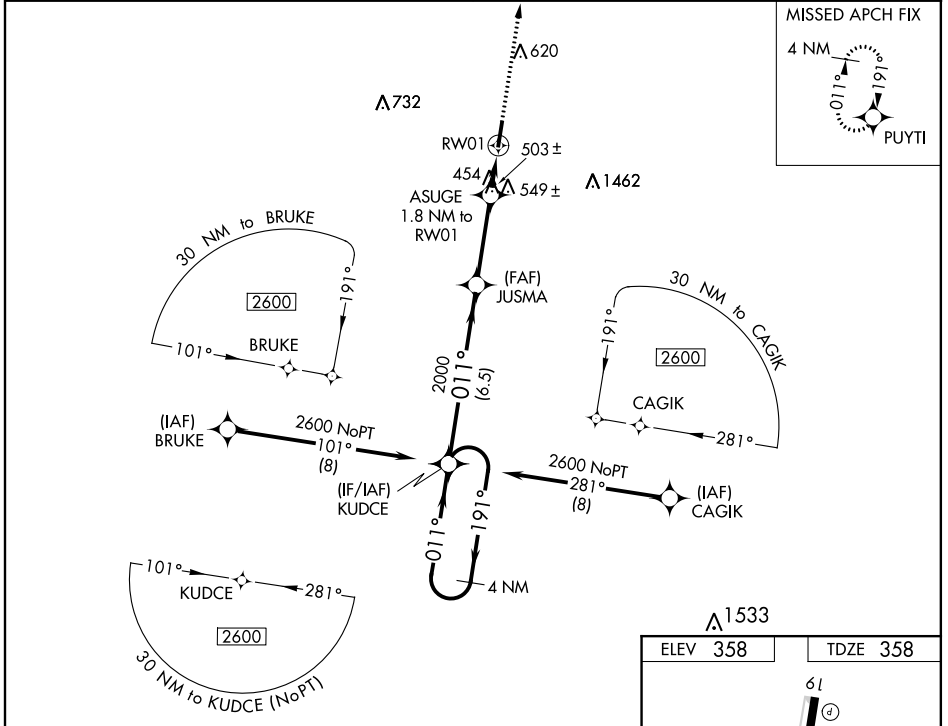
WAAS CH 69538 W01A	APP CRS 011°	Rwy Idg 4802 TDZE 358 Apt Elev 358
--	------------------------	---

RNAV (GPS) RWY 1

GIBSON COUNTY (TGC)

<p>▽ NA</p> <p>Night landing: Rwy 19 NA. DME/DME RNP-0.3 NA. Helicopter visibility reduction below 3/4 SM NA. Obtain local altimeter setting on CTAF; when not received use McKellar-Sipes Rgnl altimeter setting and increase all MDA 60 feet, increase Circling Cat C visibility 1/4 mile.</p>	<p>MISSED APPROACH: Climb to 2600 direct PUYTI and hold.</p>
---	--

<p>MEMPHIS CENTER 134.65 316.15</p>	<p>UNICOM 122.8 (CTAF)</p>
--	---------------------------------------



CATEGORY	A	B	C	D
LP MDA	720-1 362 (400-1)			
LNAV MDA	800-1 442 (500-1)	800-1 3/4 442 (500-1 3/4)		
C CIRCLING	980-1 622 (700-1)	980-1 3/4 622 (700-1 3/4)	1780-3 1422 (1500-3)	

SE-1, 02 DEC 2021 to 30 DEC 2021

SE-1, 02 DEC 2021 to 30 DEC 2021