

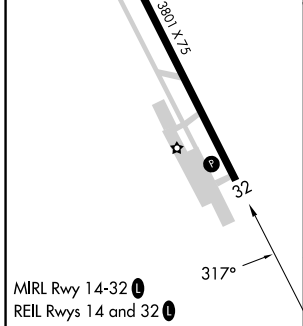
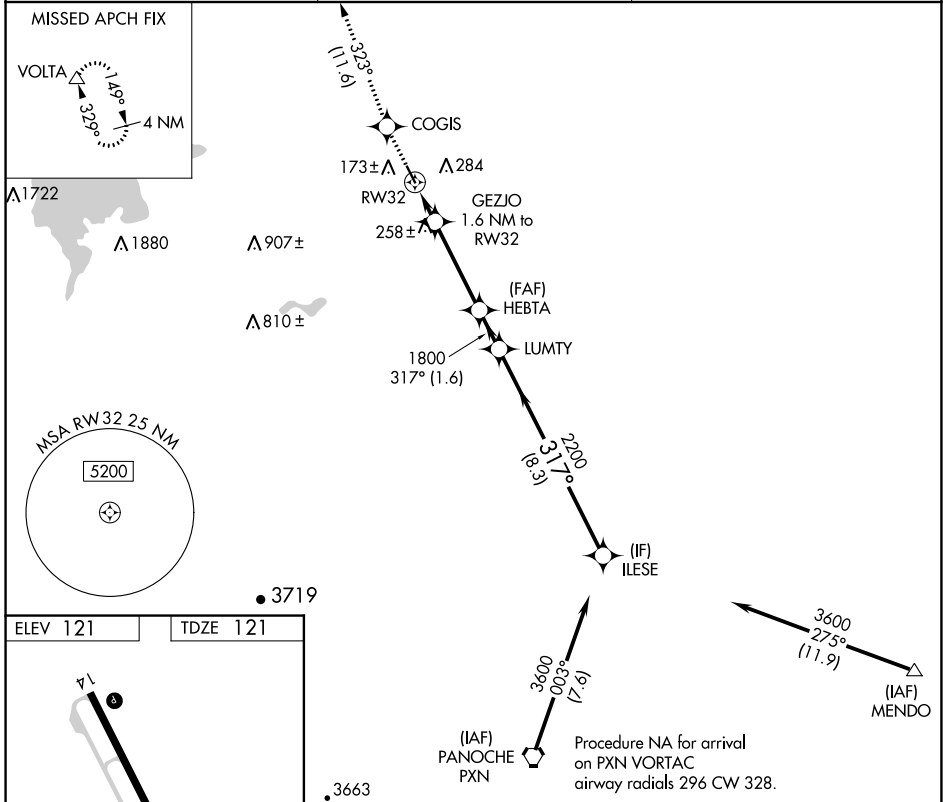
APP CRS <b>317°</b>	Rwy Idg <b>3801</b> TDZE <b>121</b> Apt Elev <b>121</b>
------------------------	---

# RNAV (GPS) RWY 32

LOS BANOS MUNI (LSN)

RNP APCH.	<p>▼ Rwy 32 helicopter visibility reduction below 3/4 SM NA. VDP NA when using Merced Yosemite Rgnl altimeter setting. When local altimeter setting not received, use Merced Yosemite Rgnl altimeter setting and increase all MDA 60 feet, and all visibility 1/4 SM.</p> <p>▲ NA</p>	MISSED APPROACH: Climb to 3000 direct COGIS and on track 323° to VOLTA and hold.
-----------	---	--

AWOS-3 <b>118.675</b>	NORCAL APP CON <b>120.95 269.45</b>	UNICOM <b>122.8 (CTAF) 0</b>
--------------------------	--	---------------------------------



3000	COGIS	VOLTA	ILESE
↑	✧	△	
	fr 323°		
	GEZJO 1.6 NM to RW32	HEBTA	LUMTY
	RW32 1.1 NM to RW32		
	680	1800	2200
	1.1 NM	0.5 NM	3.6 NM
			1.6 NM
			8.3 NM
CATEGORY	A	B	C D
LNAV MDA	520-1	399 (400-1)	520-1 1/8 399 (400-1 1/8)

SW-2, 31 OCT 2024 to 28 NOV 2024

SW-2, 31 OCT 2024 to 28 NOV 2024