

WAAS CH <b>40432</b> W15A	APP CRS <b>152°</b>	Rwy Idg TDZE Apt Elev	<b>3900</b> <b>2182</b> <b>2183</b>
---------------------------------	------------------------	-----------------------------	---

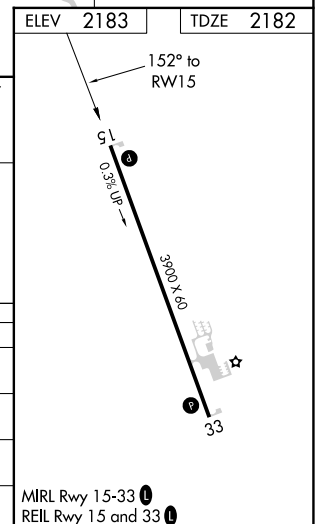
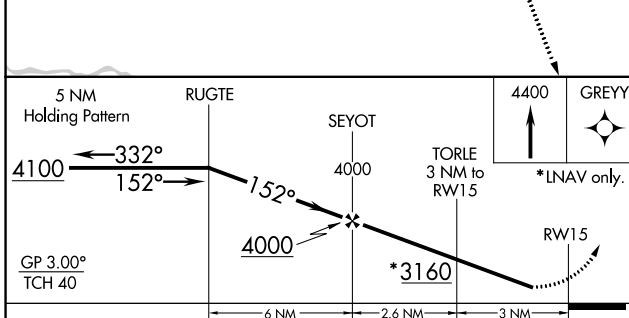
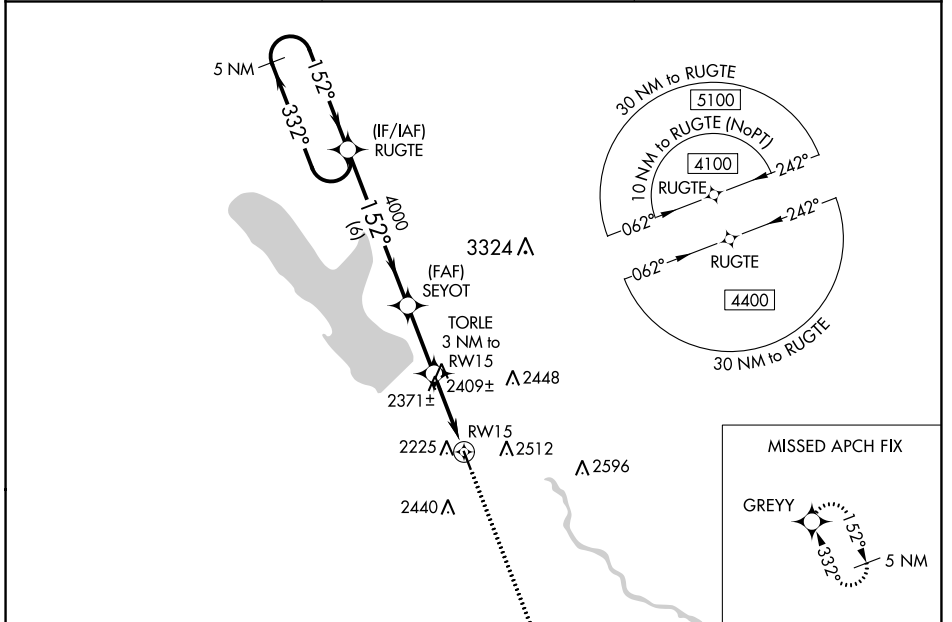
# RNAV (GPS) RWY 15

CRAM FLD (BUB)

**NA** Baro-VNAV NA. DME/DME RNP-0.3 NA. Helicopter visibility reduction below 3/4 SM NA. Use Ord altimeter setting. When not received, use Broken Bow altimeter setting and increase all DA 75 feet and all MDA 80 feet. Increase LPV, LNAV/VNAV all Cats visibility and Circling Cat B visibility to 1 1/4 mile.

MISSED APPROACH: Climb to 4400 direct GREYY and hold.

ODX ASOS <b>119.925</b>	DENVER CENTER <b>132.7 226.675</b>	CTAF <b>122.9</b>
----------------------------	---------------------------------------	----------------------



CATEGORY	A	B	C	D
LPV DA	2480-1	298 (300-1)		NA
LNAV/VNAV DA	2478-1	296 (300-1)		NA
LNAV MDA	2680-1	498 (500-1)		NA
<b>C</b> CIRCLING	2780-1 597 (600-1)	2920-1 737 (800-1)		NA

NC-2, 26 JAN 2023 to 23 FEB 2023

NC-2, 26 JAN 2023 to 23 FEB 2023