

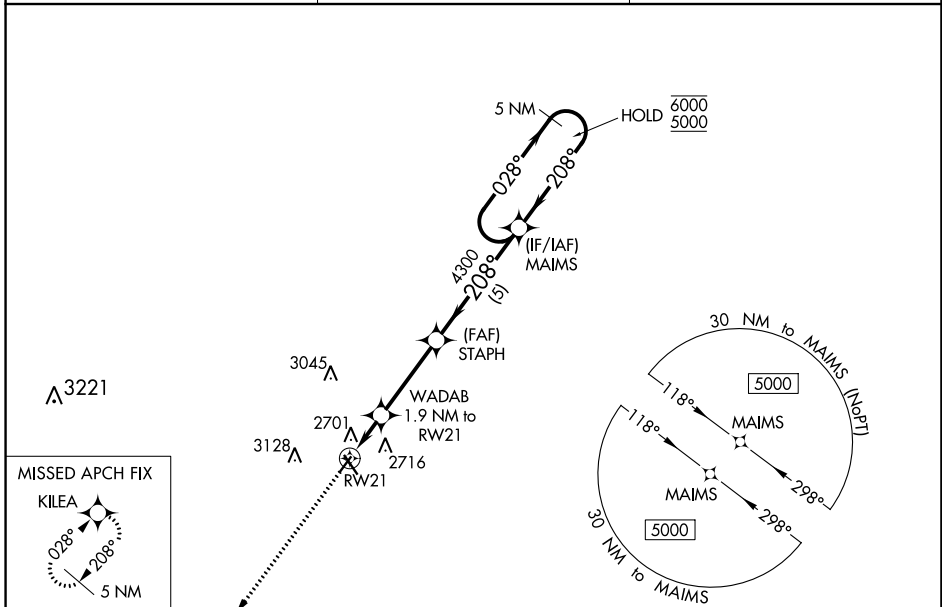
WAAS CH <b>97437</b> <b>W21A</b>	APP CRS <b>208°</b>	Rwy Idg TDZE Apt Elev	<b>3402</b> <b>2595</b> <b>2595</b>
--	------------------------	-----------------------------	---

# RNAV (GPS) RWY 21

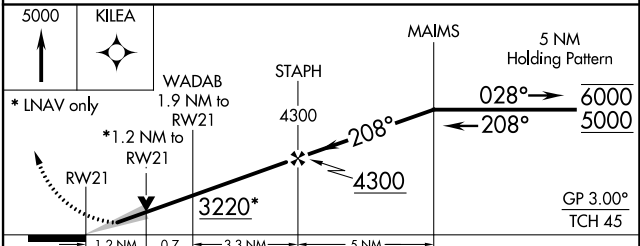
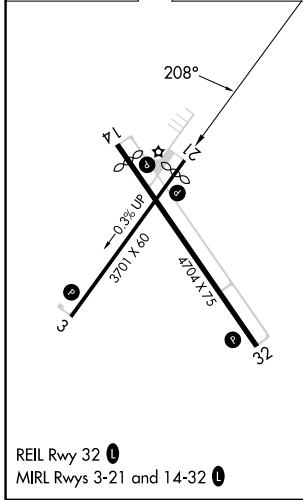
MILLER FLD (VTN)

RNP APCH.		MISSED APPROACH: Climb to 5000 direct KILEA and hold.
For uncompensated Baro-VNAV systems, LNAV/VNAV NA below -24°C or above 54°C.		

ASOS <b>118.075</b>	DENVER CENTER <b>127.95 338.2</b>	UNICOM <b>122.8 (CTAF) 0</b>
------------------------	--------------------------------------	---------------------------------



ELEV 2595	TDZE 2595
-----------	-----------



CATEGORY	A	B	C	D
LPV DA	2845-1	250 (300-1)		NA
LNAV/VNAV DA	2893-1	298 (300-1)		NA
LNAV MDA	3020-1	425 (500-1)		NA
CIRCLING	3080-1 485 (500-1)	3560-1½ 965 (1000-1½)		NA

NC-2, 31 OCT 2024 to 28 NOV 2024

NC-2, 31 OCT 2024 to 28 NOV 2024

REIL Rwy 32

MIRL Rwy 3-21 and 14-32