

|             |         |          |      |
|-------------|---------|----------|------|
| VOR/DME SBJ | APP CRS | Rwy Idg  | 2900 |
| 112.9       | 093°    | TDZE     | 558  |
| Chan 76     |         | Apt Elev | 560  |

# VOR RWY 7

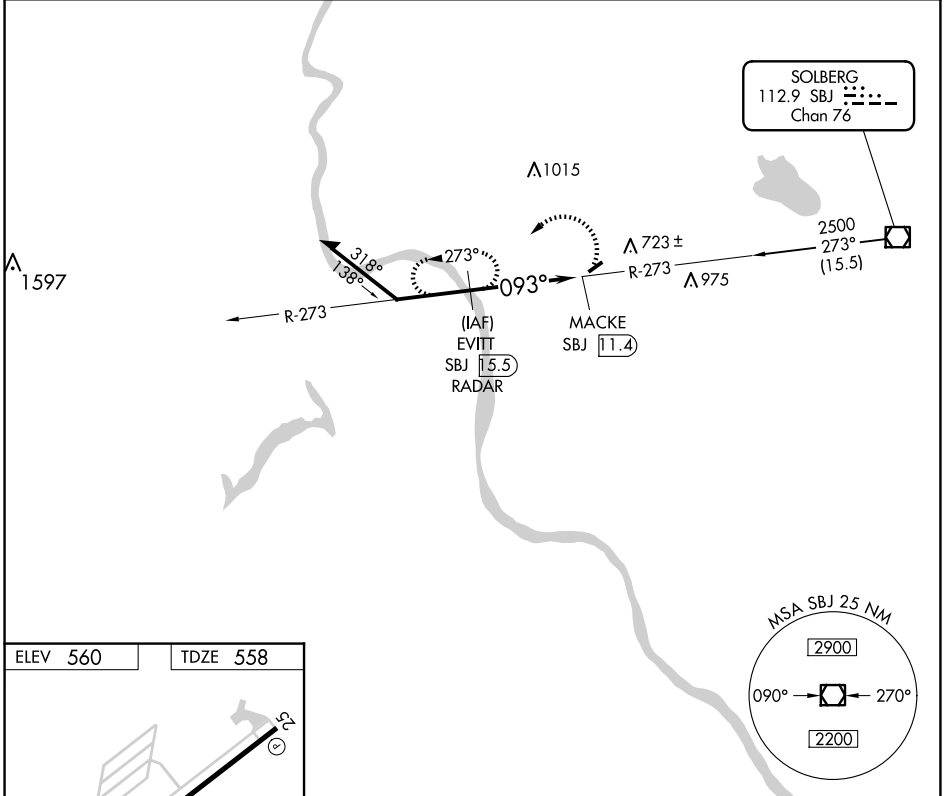
SKY MANOR (N40)

DME or RADAR required.

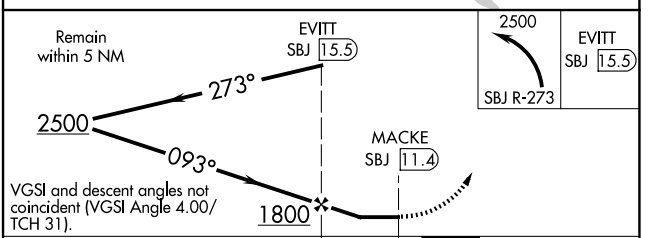
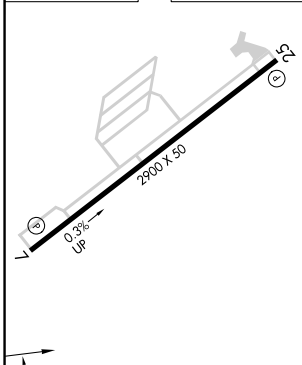
Procedure NA at night. When local altimeter setting not received, use Lehigh Valley Intl altimeter setting. Rwy 7 helicopter visibility reduction below 1 SM NA.

MISSED APPROACH: Climbing left turn to 2500 on SBJ VOR/DME R-273 to EVITT/SBJ 15.5 DME/RADAR and hold.

|                          |   |                                   |
|--------------------------|---|-----------------------------------|
| AWOS-3<br><b>121.725</b> | ALLENTOWN APP CON<br><b>119.65 124.45 351.8</b> | UNICOM<br><b>122.975 (CTAF) 0</b> |
|--------------------------|---|-----------------------------------|



|          |          |
|----------|----------|
| ELEV 560 | TDZE 558 |
|----------|----------|



| CATEGORY                                     | A                     | B | C  | D |
|--|-----------------------|---|----|---|
| S-7  | 1220-1<br>662 (700-1) |   | NA |   |
| <input checked="" type="checkbox"/> CIRCLING | 1220-1<br>660 (700-1) |   | NA |   |

NE-2, 23 JAN 2025 to 20 FEB 2025

NE-2, 23 JAN 2025 to 20 FEB 2025