

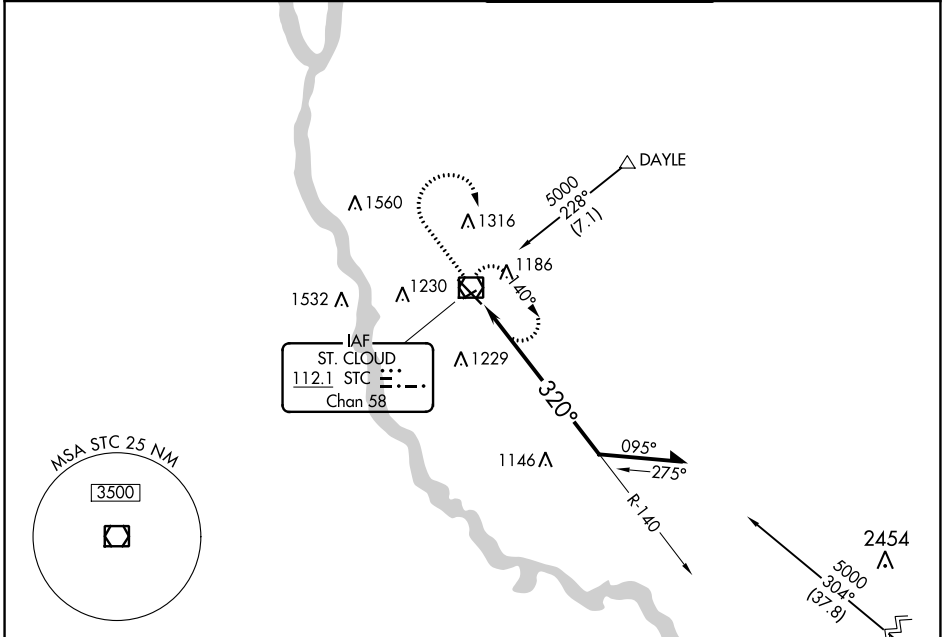
VOR/DME STC 112.1 Chan 58	APP CRS 320°	Rwy Idg TDZE 7000 1020	Apt Elev 1031
---	------------------------	--	-------------------------

VOR RWY 31

ST CLOUD RGNL (STC)

<p>⚠ For inop ALS, increase S-31 Cat C and D visibility to 1$\frac{3}{8}$ SM.</p>	<p>MALSR AS</p>	<p>MISSED APPROACH: Climb to 2700 then right turn direct STC VOR/DME and hold.</p>
---	-----------------------------------	---

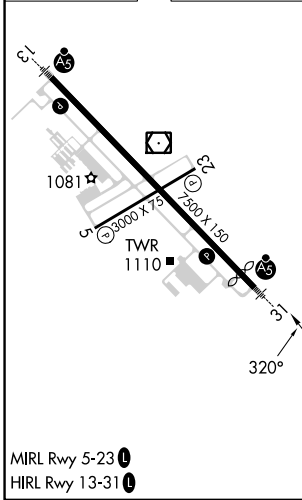
<p>ATIS 119.375</p>	<p>MINNEAPOLIS CENTER 121.05 235.775</p>	<p>ST. CLOUD TOWER * 118.25 (CTAF)</p>	<p>GND CON 123.75</p>
---------------------------------------	--	--	---



NC-1, 08 AUG 2024 to 05 SEP 2024

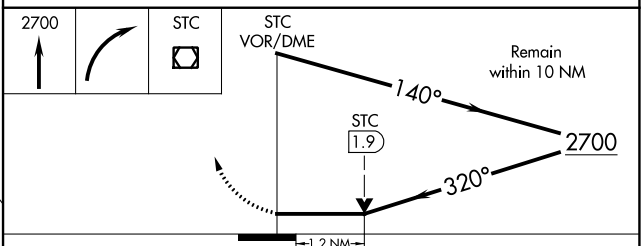
NC-1, 08 AUG 2024 to 05 SEP 2024

ELEV 1031	D	TDZE 1020
-----------	----------	-----------



GOPHER
117.3 GEP
Chan 120

Procedure NA for arrival on GEP VORTAC
airway radials 260 CW 352.



CATEGORY	A	B	C	D
S-31	1460-1/2	440 (500-1/2)	1460-3/4 440 (500-3/4)	1460-1 440 (500-1)
CIRCLING	1500-1	469 (500-1)	1620-1 1/2 589 (600-1 1/2)	1860-2 3/4 829 (900-2 3/4)