

LOC I-BPM 111.9	APP CRS 133°	Rwy Idg 7500
		TDZE 1031
		Apt Elev 1031

ILS or LOC RWY 13

ST CLOUD RGNL (STC)

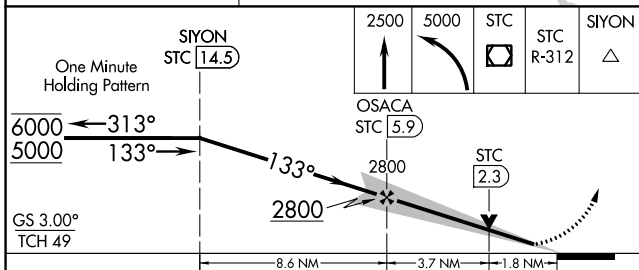
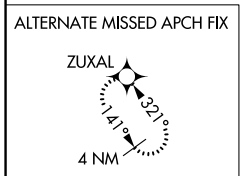
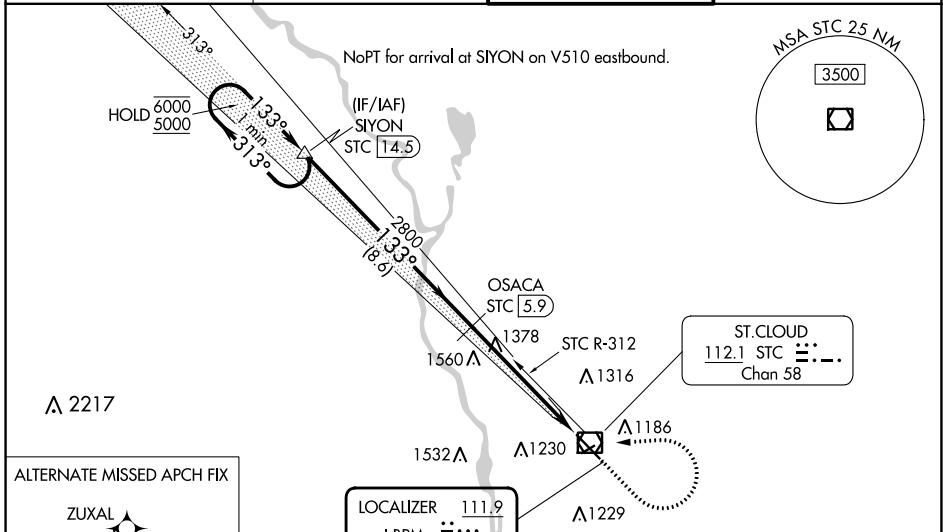
DME required.

⚠ For inop ALS when using Little Falls altimeter setting, increase S-ILS-13 all Cats visibility to 7/8 SM. When local altimeter setting not received, use Little Falls altimeter setting, increase DA to 1307 feet; increase all MDAs 80 feet and S-LOC 13 visibility Cats C and D 1/4 SM, and Circling visibility Cats C and D 1/4 SM. For inop ALS, increase S-LOC 13 Cats C and D visibility to 1 3/4 SM. DME from STC VOR/DME. DME use requires simultaneous reception of I-BPM and STC DME. VDP NA when using Little Falls altimeter setting.

MALSR

MISSED APPROACH: Climb to 2500 then climbing left turn to 5000 direct STC VOR/DME and on STC VOR/DME R-312 to SIYON/STC 14.5 DME and hold.

ATIS 119.375	MINNEAPOLIS CENTER 121.05 235.775	ST. CLOUD TOWER ★ 118.25 (CTAF) 0	GND CON 123.75
------------------------	---	---	--------------------------



ELEV 1031	D TDZE 1031
-----------	-------------

MIRL Rwy 5-23	HIRL Rwy 13-31				
FAF to MAP 5.4 NM					
Knots	60	90	120	150	180
Min:Sec	5:24	3:36	2:42	2:10	1:48

CATEGORY	A	B	C	D
S-ILS 13	1231-1/2 200 (200-1/2)			
S-LOC 13	1640-1/2 609 (700-1/2)		1640-1 3/8 609 (700-1 3/8)	
CIRCLING	1640-1 609 (700-1)		1640-1 3/4 609 (700-1 3/4)	1860-2 3/4 829 (900-2 3/4)

NC-1, 08 AUG 2024 to 05 SEP 2024

NC-1, 08 AUG 2024 to 05 SEP 2024