

APP CRS	Rwy Idg	5501
022°	TDZE	846
	Apt Elev	874

RNAV (GPS) RWY 2

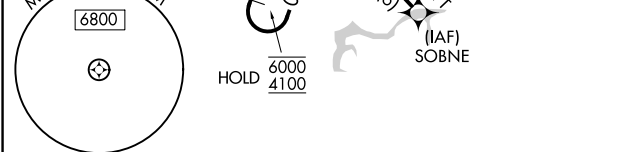
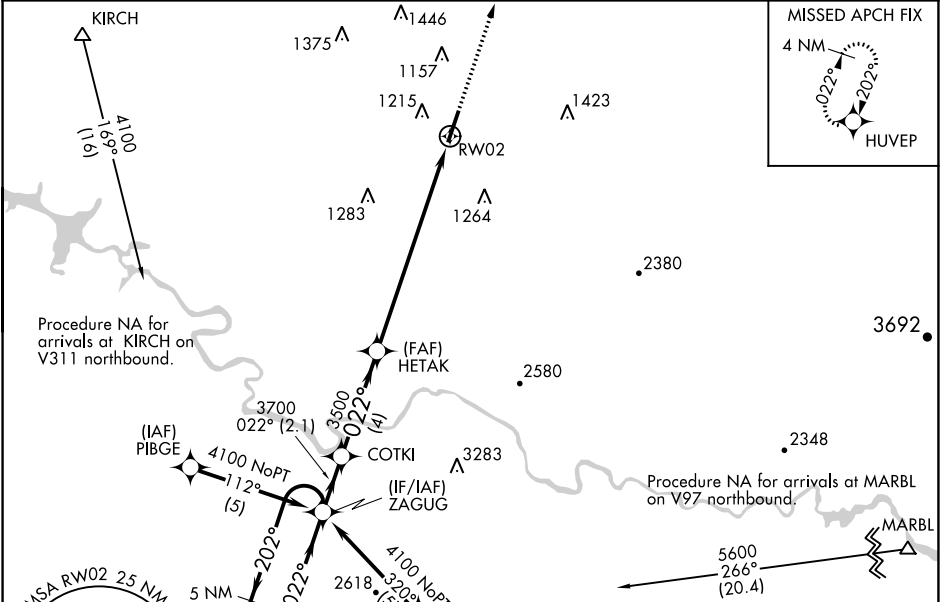
MCMINN COUNTY (MMI)

RNP APCH - GPS.

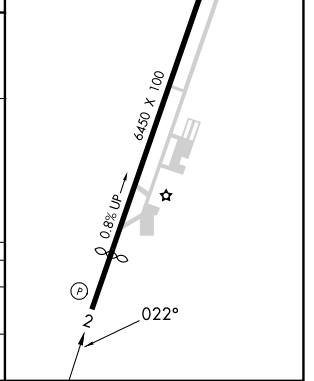
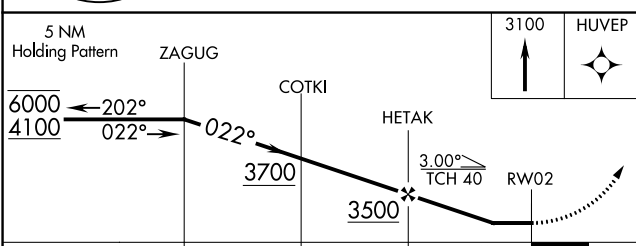
▼ **▲** Rwy 2 helicopter visibility reduction below 1 SM NA. Straight-in Rwy 2 NA at night. Circling Rwy 2 NA at night. When local altimeter setting not received, use Mc Ghee Tyson altimeter setting and increase all MDAs 120 feet, and LNAV visibility Cats C and D ½ SM, and Circling visibility Cat A ¼ SM and Cat C ½ SM.

MISSED APPROACH:
Climb to 3100 direct HUVEP and hold.

AWOS-3 125.425	KNOXVILLE APP CON 123.9 353.6	UNICOM 122.8 (CTAF)
--------------------------	-----------------------------------------	-------------------------------



ELEV 874	TDZE 846
REIL Rwy 2 and 20	
MIRL Rwy 2-20	



CATEGORY	A	B	C	D
LNAV MDA	1600-1 754 (800-1)	1600-1¼ 754 (800-1¼)	1600-2	754 (800-2)
CIRCLING	1600-1 726 (800-1)	1600-1¼ 726 (800-1¼)	1600-2 726 (800-2)	1820-3 946 (1000-3)

SE-1, 31 OCT 2024 to 28 NOV 2024

SE-1, 31 OCT 2024 to 28 NOV 2024