

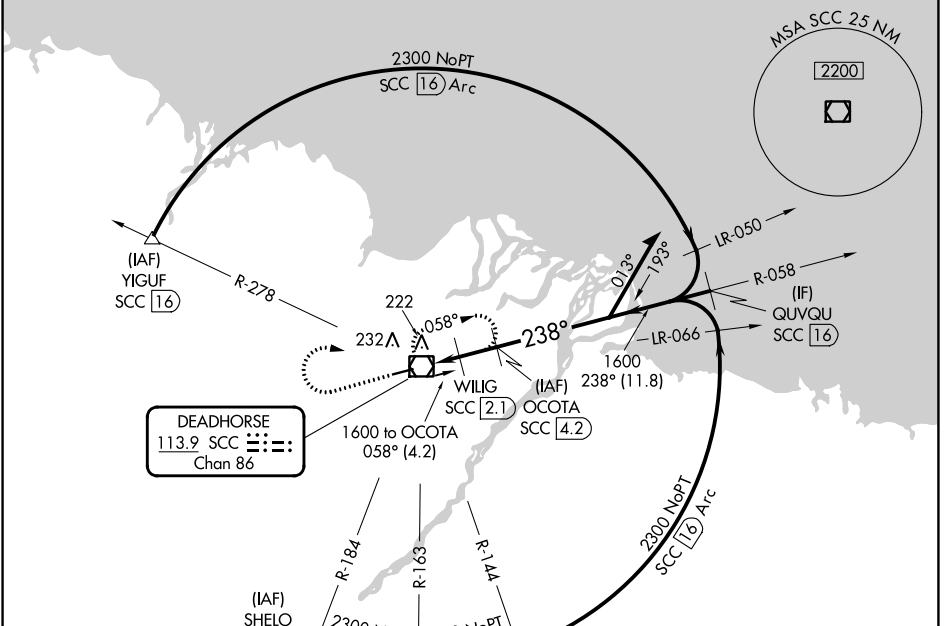
VOR/DME SCC 113.9 Chan 86	APP CRS 238°	Rwy Idg TDZE 66 Apt Elev 67
---	------------------------	---

VOR Z RWY 24

DEADHORSE (SCC) (PASC)

<p>DME required. For inop ALS, increase Cats C/D/E visibility to RVR 6000.</p>	<p>MALSR</p>	<p>MISSED APPROACH: Climb to 1500 then climbing right turn to 2000 direct SCC VOR/DME and hold, continue climb-in-hold to 2000.</p>
--	--------------	---

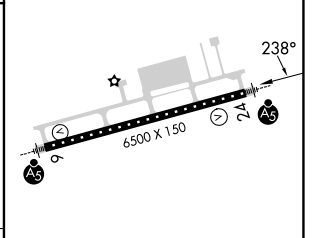
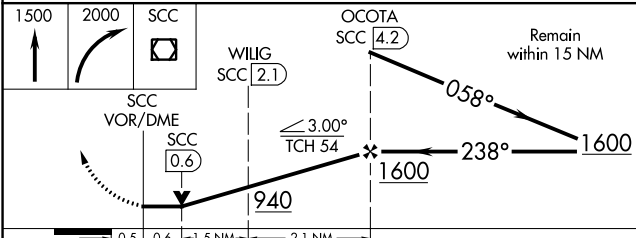
AFIS 118.4	ANCHORAGE CENTER 134.4 370.9	DEADHORSE RADIO 123.6 (CTAF) 0
----------------------	--	--



DEADHORSE
113.9 SCC
Chan 86

ELEV 67	TDZE 66
---------	---------

DME REQUIRED



CATEGORY	A	B	C	D	E
S-24	480/24 414 (500-1/2)		480/40 414 (500-3/4)		
CIRCLING	540-1 473 (500-1)		580-1 1/2 513 (600-1 1/2)	620-2 553 (600-2)	

HIRL Rwy 6-24

AK, 05 SEP 2024 to 31 OCT 2024

AK, 05 SEP 2024 to 31 OCT 2024