

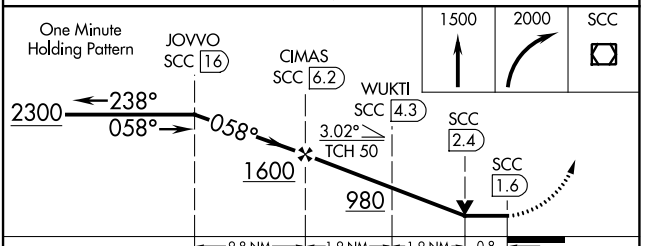
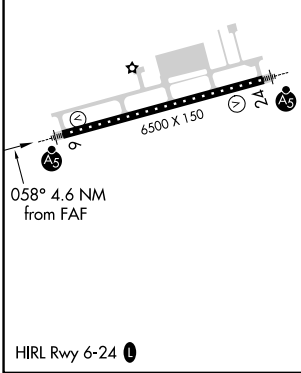
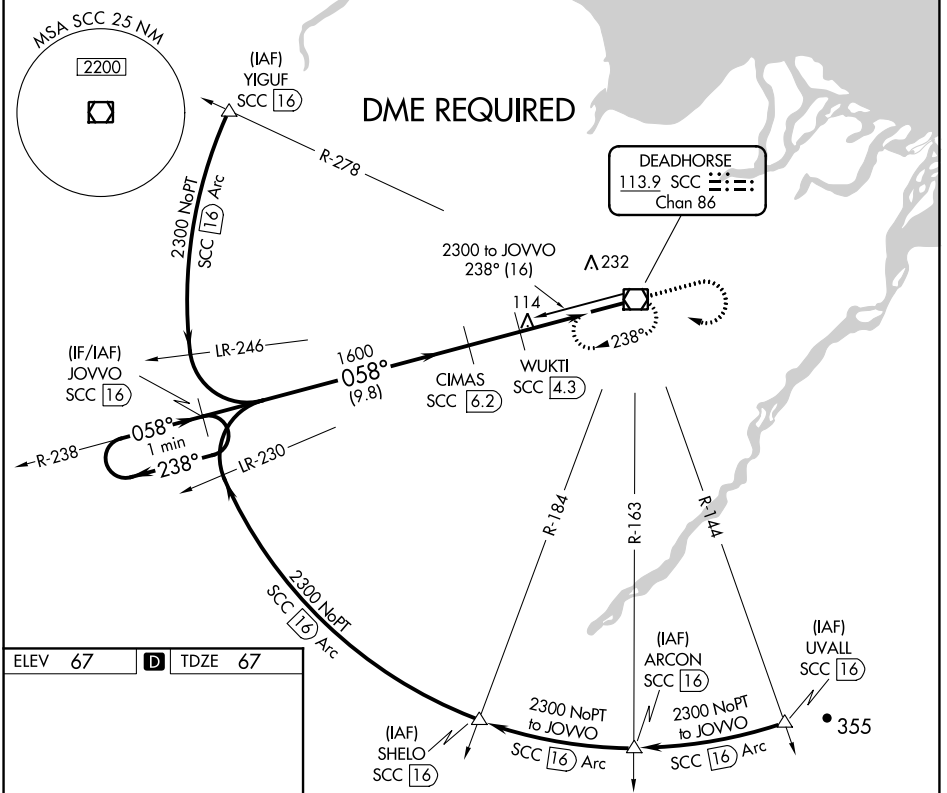
VOR/DME SCC 113.9 Chan 86	APP CRS 058°	Rwy Idg 6500 TDZE 67 Apt Elev 67
-----------------------------------------------	------------------------	-------------------------------------------------------------

VOR RWY 6

DEADHORSE (SCC) (PASC)

<p>DME required. For inop ALS, increase S-6 Cats C/D/E to RVR 4500.</p>	<p>MALSR</p>	<p>MISSED APPROACH: Climb to 1500 then climbing right turn to 2000 direct SCC VOR/DME and hold, continue climb-in-hold to 2000.</p>

AFIS 118.4	ANCHORAGE CENTER 134.4 370.9	DEADHORSE RADIO 123.6 (CTAF) 0
----------------------	----------------------------------------	------------------------------------------



CATEGORY	A	B	C	D	E
S-6	380/24 313 (400-1/2)				
C CIRCLING	540-1	473 (500-1)	580-1 1/2 513 (600-1 1/2)	620-2	553 (600-2)

AK, 31 OCT 2024 to 26 DEC 2024

AK, 31 OCT 2024 to 26 DEC 2024