

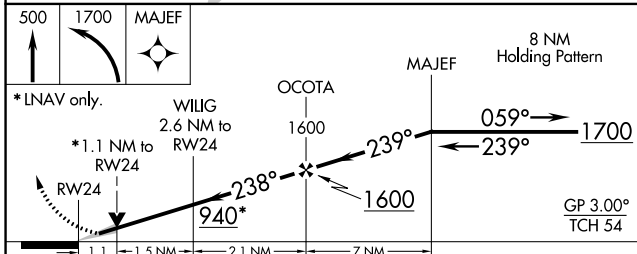
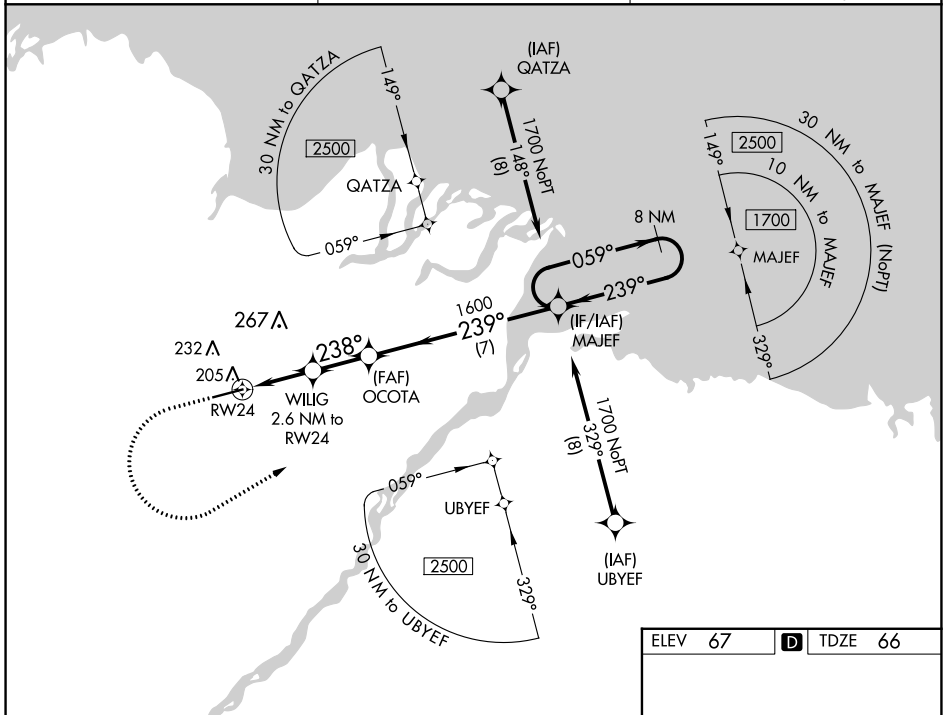
WAAS CH 69203 W24A	APP CRS 238°	Rwy Idg TDZE Apt Elev	6500 66 67
--	------------------------	-----------------------------	---------------------------------------

RNAV (GPS) Z RWY 24

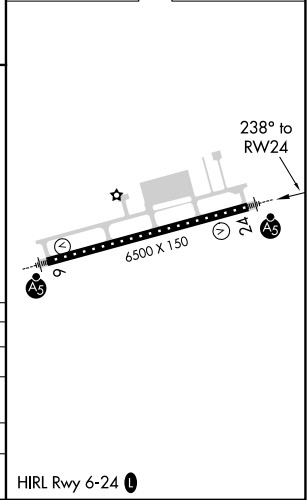
DEADHORSE (SCC) (PASC)

<p>▼ For uncompensated Baro-VNAV systems, LNAV/VNAV NA below -17°C (2°F) or above 54°C (130°F). DME/DME RNP-0.3 NA. For inop ALS, increase LPV Cat E visibility to RVR 4000, LNAV/VNAV all Cats visibility to RVR 5000, and LNAV Cat E visibility to RVR 6000. # RVR 1800 authorized with use of FD or AP or HUD to DA.</p>	<p>MALSR</p>	<p>MISSED APPROACH: Climb to 500 then climbing left turn to 1700 direct MAJEF and hold.</p>
--	--------------	---

AFIS 118.4	ANCHORAGE CENTER 134.4 370.9	DEADHORSE RADIO 123.6 (CTAF) 0
----------------------	--	--



ELEV 67	D TDZE 66
---------	------------------



CATEGORY	A	B	C	D	E
LPV DA#		266/24	200 (200-½)		
LNAV/VNAV DA		381/30	315 (400-¾)		
LNAV MDA	460/24	394 (400-½)	460/35	394 (400-¾)	
C CIRCLING	540-1	473 (500-1)	580-1½ 513 (600-1½)	620-2	553 (600-2)

HIRL Rwy 6-24 **0**

AK, 05 SEP 2024 to 31 OCT 2024

AK, 05 SEP 2024 to 31 OCT 2024