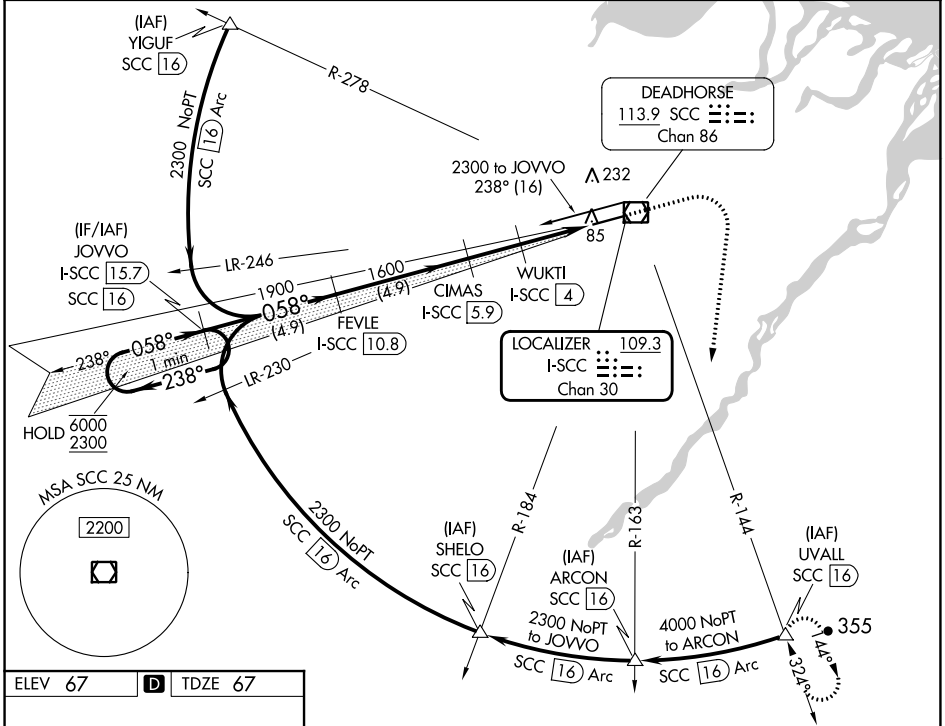


LOC/DME I-SCC 109.3 Chan 30	APP CRS 058°	Rwy Idg 6500 TDZE 67 Apt Elev 67
---	------------------------	---

ILS or LOC RWY 6 DEADHORSE (SCC) (PASC)

DME required. For inop ALS, increase S-ILS 6 Cat E visibility to RVR 4000 and S-LOC 6 Cats C/D/E to RVR 4500. *RVR 1800 authorized with use of FD or AP or HUD to DA.	MALSR 	MISSED APPROACH: Climb to 1500 then climbing right turn to 4000 on heading 170° and SCC VOR/DME R-144 to UVALL/SCC 16 DME and hold.
---	-----------	---

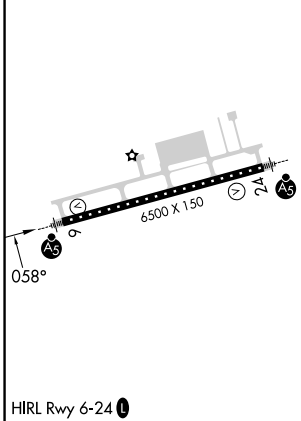
AFIS 118.4	ANCHORAGE CENTER 134.4 370.9	DEADHORSE RADIO 123.6 (CTAF)
----------------------	--	--



AK, 31 OCT 2024 to 26 DEC 2024

AK, 31 OCT 2024 to 26 DEC 2024

ELEV 67	D	TDZE 67
---------	----------	---------



VGSi and ILS glidepath not coincident (VGSi Angle 3.00/TCH 50).		1500	4000	SCC	UVALL
One Minute Holding Pattern		↑	hdg 170°	△	
JOVVO I-SCC 15.7	FEVLE I-SCC 10.8	Use I-SCC DME when on the localizer course.			
6000 ← 238°	2300 058°	CIMAS I-SCC 5.9	WUKTI I-SCC 4	I-SCC 2	I-SCC 1.3
GS 3.00°	TCH 58	1600	1600	980	
		← 4.9 NM	← 4.9 NM	← 1.9 NM	← 0.8 NM
CATEGORY	A	B	C	D	E
S-ILS 6*	267/24 200 (200-1/2)				
S-LOC 6	360/24 293 (300-1/2)				
C CIRCLING	540-1	473 (500-1)	580-1 1/2 513 (600-1 1/2)	620-2	553 (600-2)