

LOC I-UGZ <b>111.9</b>	APP CRS <b>227°</b>	Rwy Idg TDZE Apt Elev	<b>5501</b> <b>134</b> <b>134</b>
---------------------------	------------------------	-----------------------------	---

# ILS or LOC RWY 23

WAYNE EXEC JETPORT (GWW)

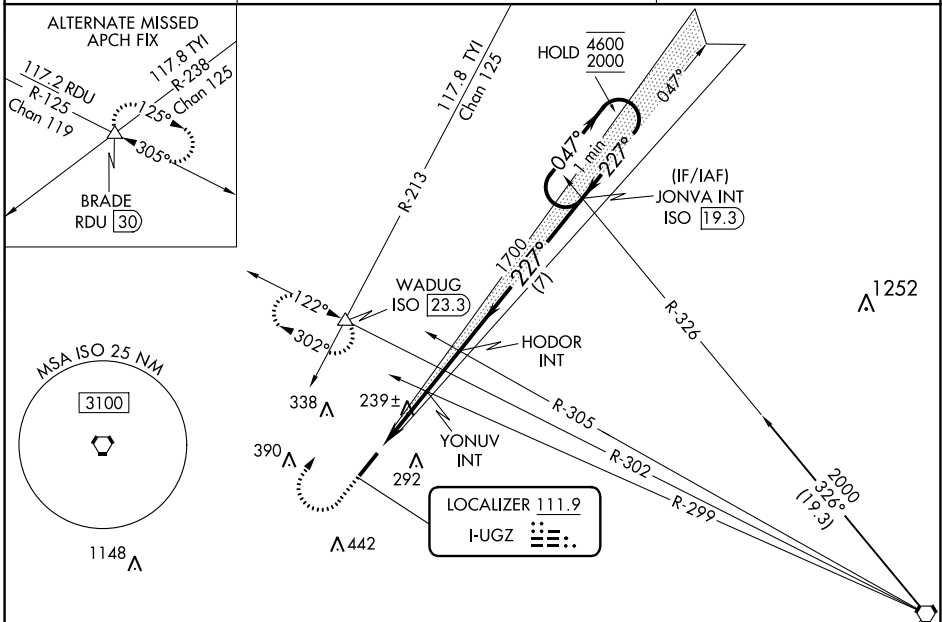
DME or RADAR required.

**⚠** When local altimeter setting not received, use Smithfield altimeter setting and increase DA to 388 and all MDAs 60 feet, increase S-LOC Cats C/D visibility ¼ SM, Circling Cats C/D ¼ SM. Inop table does not apply to S-ILS 23.

**ODALS**

**MISSED APPROACH:** Climb to 900 then climbing right turn to 2000 on heading 040° and on ISO VORTAC R-302 to WADUG INT/ISO 23.3 DME and hold.

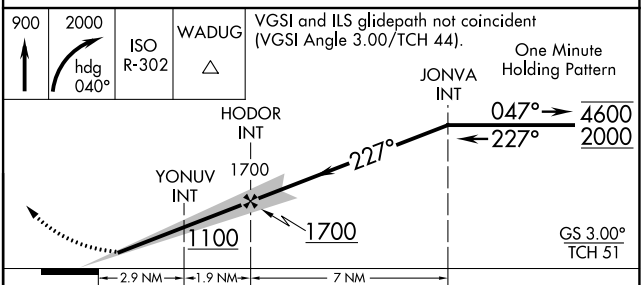
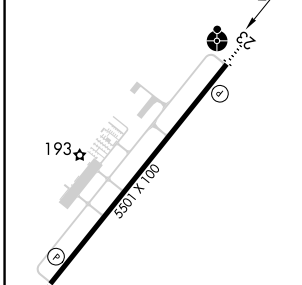
AWOS-3P <b>118.975</b>	SEYMOUR JOHNSON APP CON ★ <b>121.175 290.9</b>	UNICOM <b>122.975 (CTAF) 0</b>
---------------------------	---	-----------------------------------



SE-2, 08 AUG 2024 to 05 SEP 2024

SE-2, 08 AUG 2024 to 05 SEP 2024

ELEV 134	TDZE 134
----------	----------



REIL Rwy 5 and 23	1				
MIRL Rwy 5-23	1				
FAF to MAP	4.8 NM				
Knots	60	90	120	150	180
Min:Sec	4:48	3:12	2:24	1:55	1:36
CATEGORY	A	B	C	D	
S-ILS 23	334-¾ 200 (200-¾)				
S-LOC 23	500-¾ 366 (400-¾)	500-1 366 (400-1)			
CIRCLING	580-1 446 (500-1)	640-1 506 (600-1)	760-1¾ 626 (700-1¾)	760-2 626 (700-2)	