

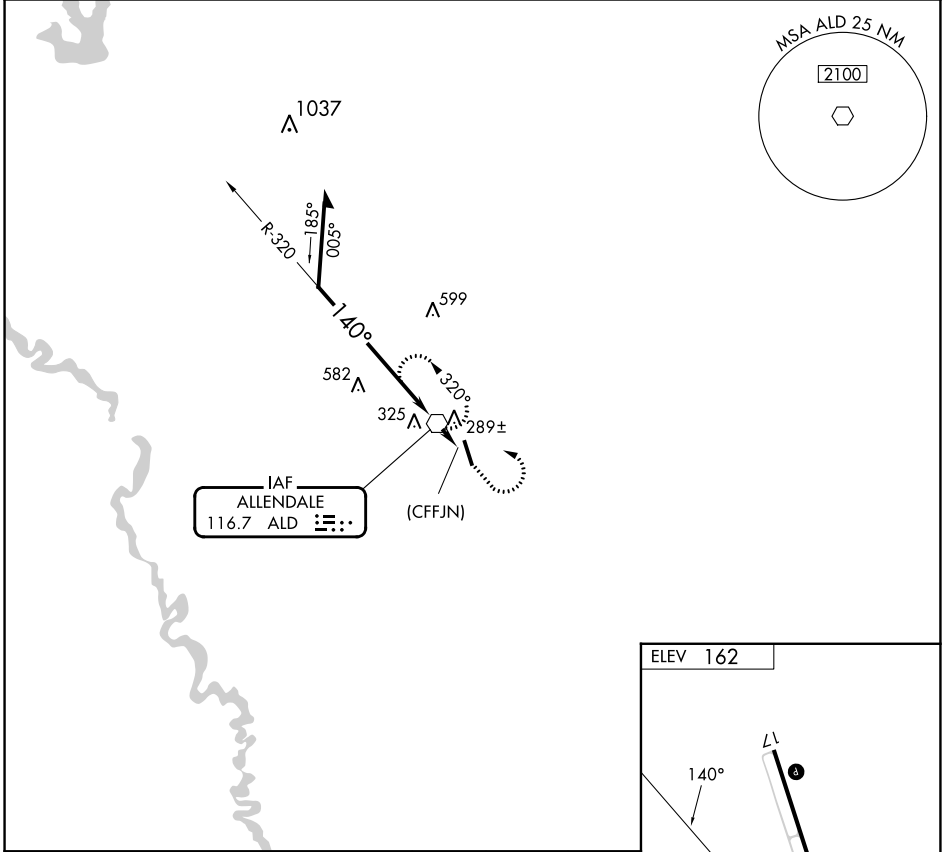
VOR ALD 116.7	APP CRS 140°	Rwy Idg TDZE Apt Elev	N/A N/A 162
-------------------------	------------------------	-----------------------------	--

VOR-A
ALLENDALE COUNTY (A.Q.X)

⚠ When local altimeter setting not received, use Augusta Rgnl at Bush Fld altimeter setting.

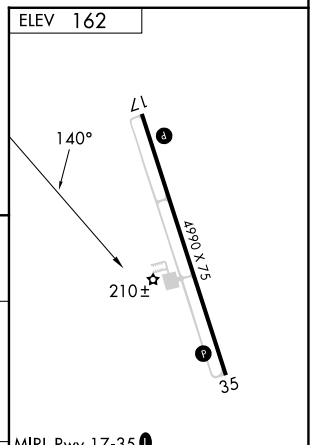
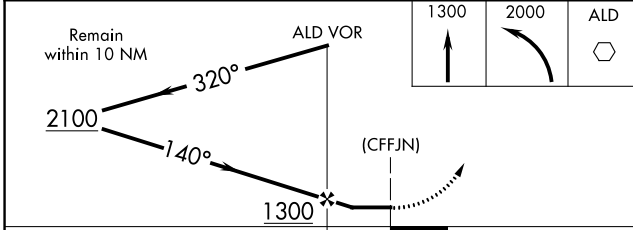
⚠ MISSED APPROACH: Climb to 1300, then climbing left turn to 2000 direct ALD VOR and hold.

AWOS-3PT 118.95	JACKSONVILLE CENTER 132.925 363.2	UNICOM 122.8 (CTAF) 0
---------------------------	---	---------------------------------



SE-2, 31 OCT 2024 to 28 NOV 2024

SE-2, 31 OCT 2024 to 28 NOV 2024



CATEGORY	A	B	C	D	FAF to MAP 1.1 NM	
C CIRCLING	860-1	698 (700-1)	NA			
	Knots	60	90	120	150	180
	Min:Sec	1:06	0:44	0:33	0:26	0:22