

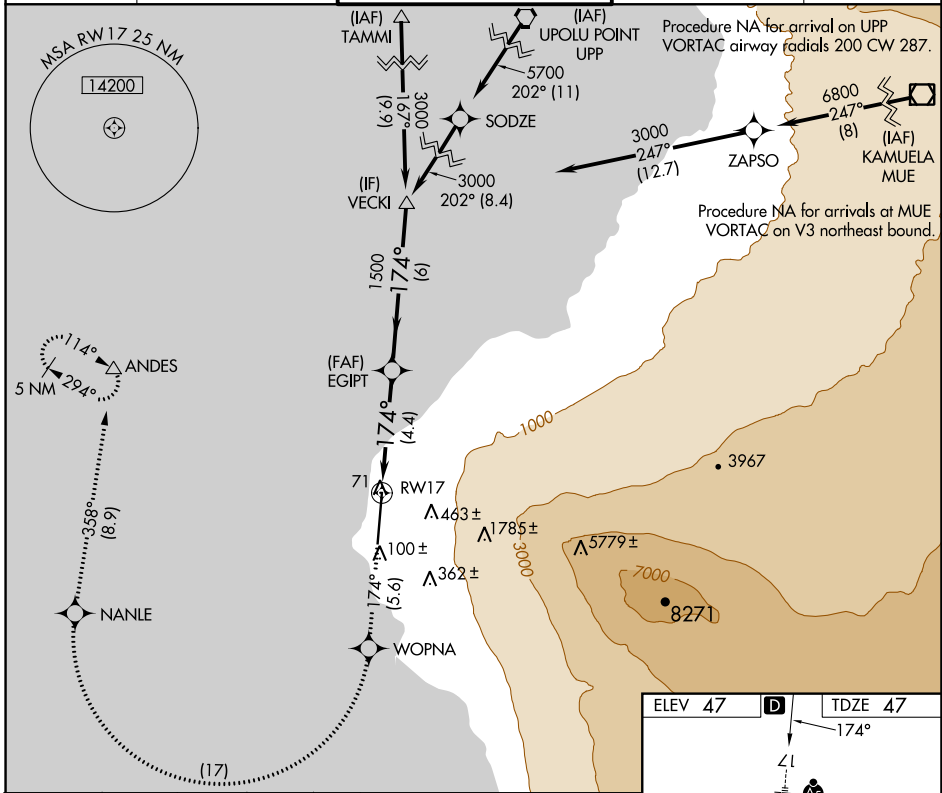
APP CRS	Rwy Idg 11000
174°	TDZE 47
	Apt Elev 47

RNAV (RNP) Z RWY 17

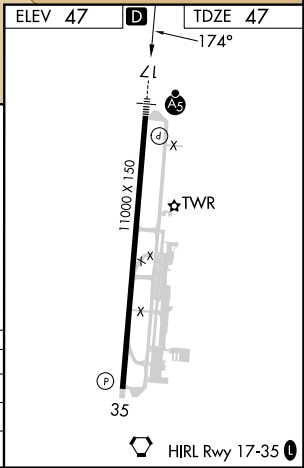
ELLISON ONIZUKA KONA INTL AT KEAHOLE (KOA) (PHKO)

<p>V For uncompensated Baro-VNAV systems, procedure NA below 6°C (43°F) or above 48°C (119°F). RF required. GPS required. For inop ALS, increase RNP 0.30 all Cats visibility to 1½ mile.</p>	<p>MALSR</p>	<p>MISSED APPROACH: Climb to 5000 on track 174° to WOPNA and right turn to NANLE, and on track 358° to ANDES and hold.</p>

ATIS 127.4	HCF CENTER 118.45 278.3	KONA TOWER★ 120.3 (CTAF) 254.3	GND CON 121.9	CLNC DEL 118.6
----------------------	-----------------------------------	--	-------------------------	--------------------------



5000	↑	tr 174°	WOPNA	↪	NANLE	tr 358°	ANDES	△
		EGYPT		VECKI				
		1500		3000				
		RW17		174°				
		4.4 NM		6 NM				
				GP 3.00°				
				TCH 55				
CATEGORY	A	B	C	D				
RNP 0.17 DA	297-3/4		250 (300-3/4)					
RNP 0.30 DA	484-1		437 (500-1)					



AUTHORIZATION REQUIRED

PAC, 11 JUL 2024 to 05 SEP 2024

PAC, 11 JUL 2024 to 05 SEP 2024