

LOC/DME I-KOA	APP CRS	Rwy Idg	11000
109.7	174°	TDZE	47
Chan 34		Apt Elev	47

ILS or LOC RWY 17

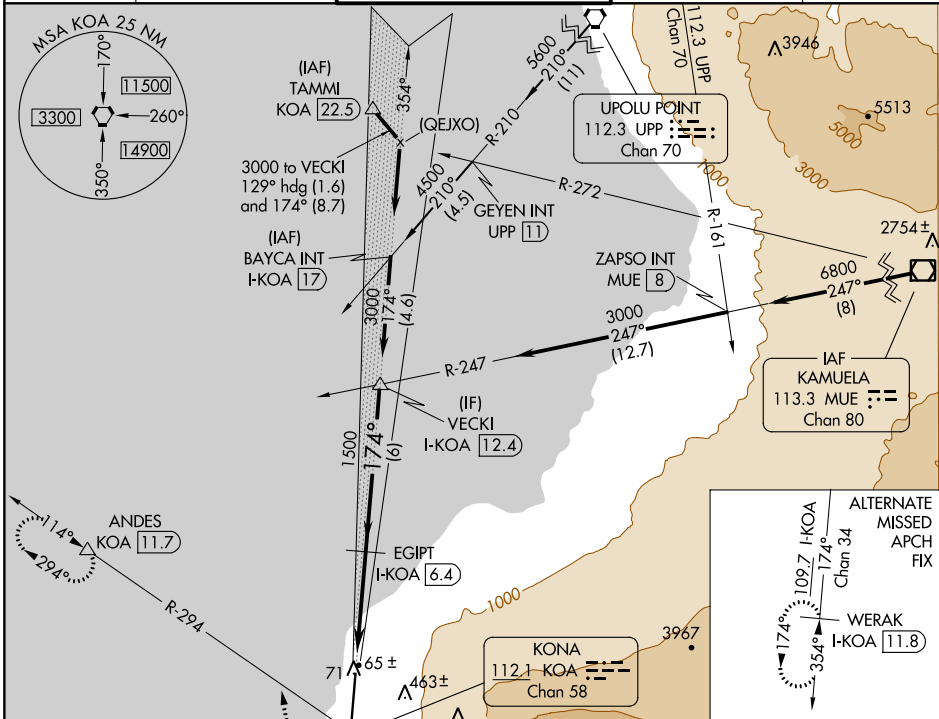
ELLISON ONIZUKA KONA INTL AT KEAHOLE (KOA)(PHKO)

⚠ For inoperative MALSR, increase S-ILS 17 Cat E visibility to 3/4 mile and S-LOC 17 Cats C, D, E visibility to 1 mile. Circling NA east of Rwy 17-35. Autopilot coupled approach NA below 415. DME required.

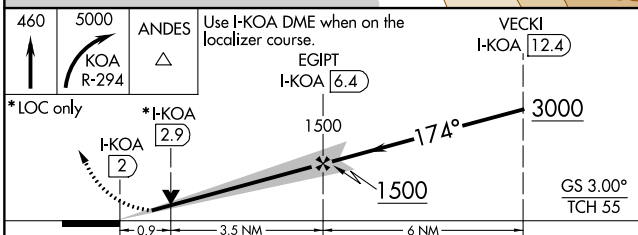


MISSED APPROACH: Climb to 460 then climbing right turn to 5000 on KOA VORTAC R-294 to ANDES/KOA VORTAC 11.7 DME and hold, continue climb-in-hold to 5000.

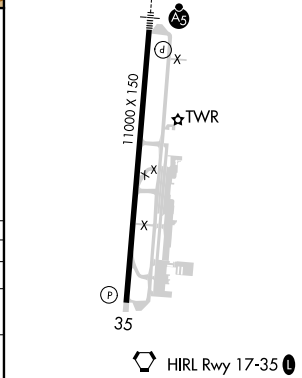
ATIS	HCF CENTER	KONA TOWER*	GND CON	CLNC DEL
127.4	118.45 278.3	120.3(CTAF) 0 254.3	121.9	118.6



460	5000	ANDES	Use I-KOA DME when on the localizer course.	VECKI I-KOA [12.4]
↑	↷	△		
	KOA R-294			



ELEV 47	D	TDZE 47
	174°	



CATEGORY	A	B	C	D	E
S-ILS 17			247-1/2	200 (200-1/2)	
S-LOC 17	400-1/2	353 (400-1/2)		400-5/8	353 (400-5/8)
C CIRCLING	520-1	473 (500-1)	520-1 1/2	473 (500-1 1/2)	600-2 553 (600-2)

PAC, 11 JUL 2024 to 05 SEP 2024

PAC, 11 JUL 2024 to 05 SEP 2024