

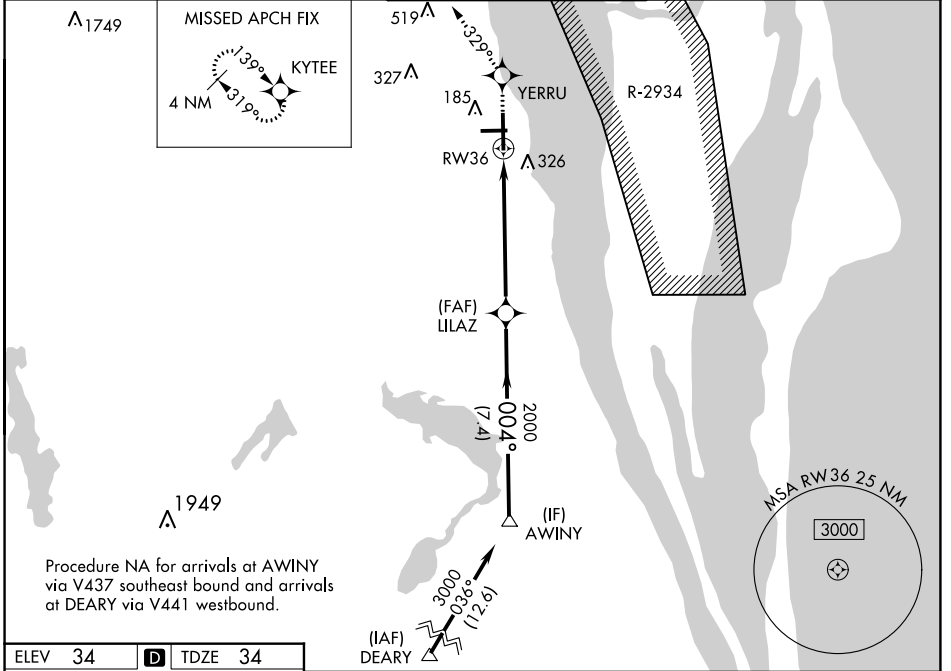
WAAS CH 69313 W36A	APP CRS 004°	Rwy Idg 7244 TDZE 34 Apt Elev 34
--	------------------------	---

RNAV (GPS) RWY 36

SPACE COAST RGNL (TIX)

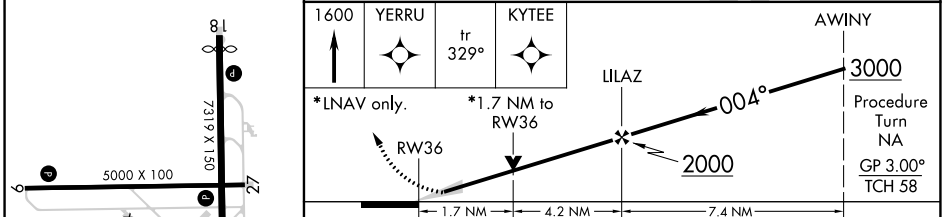
<p>▽ DME/DME RNP-0.3 NA. △ When control tower closed, use Melbourne altimeter setting. VDP NA when using Melbourne altimeter setting.</p>	<p>MALSR </p>	<p>MISSED APPROACH: Climb to 1600 direct YERRU and via track 329° to KYTEE and hold.</p>
---	-------------------	--

<p>ATIS 120.625</p>	<p>ORLANDO APP CON 134.95 281.425</p>	<p>SPACE COAST TOWER * 118.9 (CTAF) 0</p>	<p>GND CON 121.85</p>	<p>UNICOM 122.95</p>
--------------------------------	--	--	----------------------------------	---------------------------------

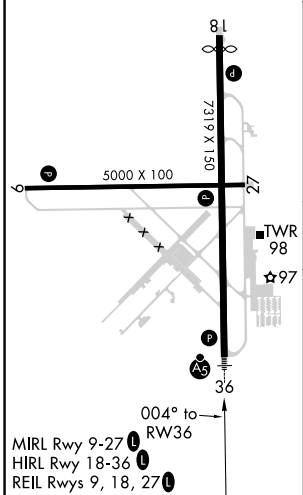


Procedure NA for arrivals at AWINY via V437 southeast bound and arrivals at DEARY via V441 westbound.

ELEV 34	D	TDZE 34
---------	----------	---------



CATEGORY	A	B	C	D
LPV DA	234-1/2 200 (200-1/2)			
LNAV MDA	640-1/2	606 (700-1/2)	640-1 1/4 606 (700-1 1/4)	640-1 1/2 606 (700-1 1/2)
CIRCLING	640-1	606 (700-1)	640-1 3/4 606 (700-1 1/4)	640-2 606 (700-2)
MELBOURNE ALTIMETER SETTING MINIMUMS				
LPV DA	294-1/2 260 (300-1/2)			
LNAV MDA	700-1/2	666 (700-1/2)	700-1 1/4 666 (700-1 1/4)	700-1 1/2 666 (700-1 1/2)
CIRCLING	700-1	666 (700-1)	700-1 3/4 666 (700-1 1/4)	700-2 666 (700-2)



SE-3, 31 OCT 2024 to 28 NOV 2024

SE-3, 31 OCT 2024 to 28 NOV 2024