

WAAS CH 49135 W04A	APP CRS 040°	Rwy Idg 5002 TDZE 181 Apt Elev 182
--	------------------------	---

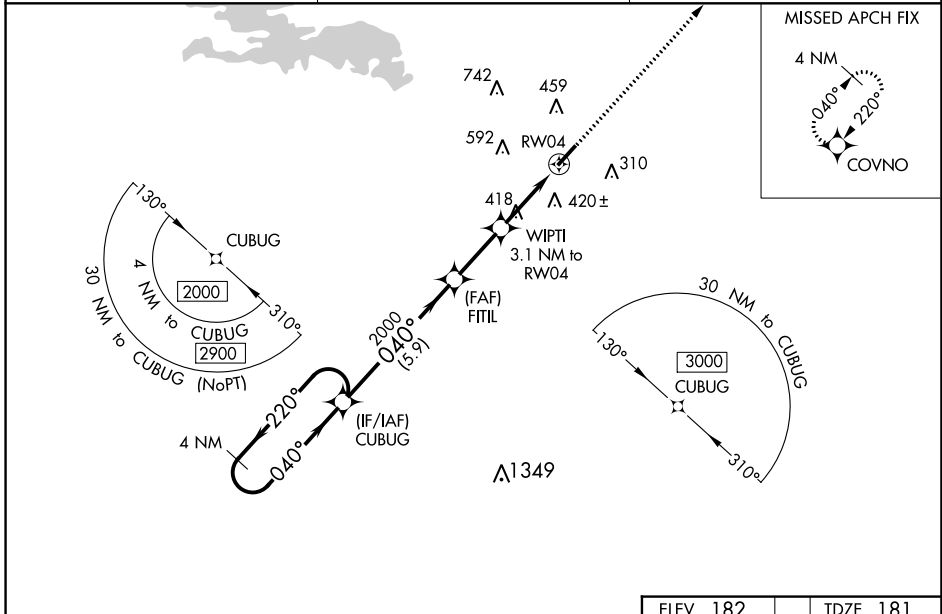
RNAV (GPS) RWY 4

DEXTER B FLORENCE MEML FLD (ADF)

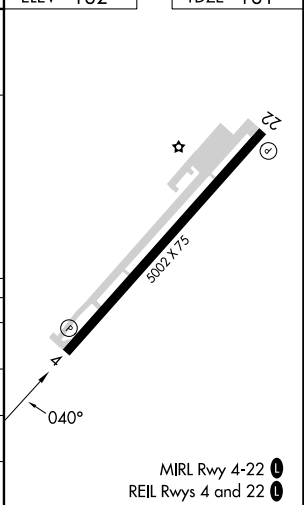
⚠ DME/DME RNP-0.3 NA. When local altimeter setting not received use Hot Springs altimeter setting and increase all DA 103 feet and MDA 120 feet and increase LPV all Cats visibility $\frac{1}{8}$ mile and LNAV/VNAV all Cats visibility and Circling Cat C visibility $\frac{1}{2}$ mile.
⚠ NA For uncompensated Baro-VNAV systems, LNAV/VNAV NA below -15°C (5°F) or above 54°C (130°F). Baro-VNAV NA when using Hot Springs altimeter setting. Helicopter visibility reduction below $\frac{3}{4}$ SM NA. Night landing: Rwy 22 NA.

MISSED APPROACH:
Climb to 2100 direct COVNO and hold.

AWOS-3PT 118.175	MEMPHIS CENTER 128.475 377.15	UNICOM 122.7 (CTAF)
----------------------------	---	-------------------------------



4 NM Holding Pattern		VGSI and RNAV glidepath not coincident (VGSI Angle 3.00/TCH 23).		ELEV 182	TDZE 181
CUBUG		FITIL	WIPTI	2100	COVNO
← 220°		2000	3.1 NM to RWY 4	↑	✦
→ 040°		2000	RWY 4	*LNAV only.	
GP 3.00°		2000			
TCH 45		1200			
		5.9 NM	2.5 NM		
CATEGORY	A	B	C	D	
LPV DA	431-1 250 (300-1)			NA	
LNAV/VNAV DA	669-1 $\frac{5}{8}$ 488 (500-1 $\frac{3}{8}$)			NA	
LNAV MDA	680-1	499 (500-1)	680-1 $\frac{3}{8}$ 499 (500-1 $\frac{3}{8}$)	NA	
C CIRCLING	760-1 578 (600-1)	800-1 618 (700-1)	1040-2 $\frac{1}{2}$ 858 (900-2 $\frac{1}{2}$)	NA	



SC-1, 03 OCT 2024 to 31 OCT 2024

SC-1, 03 OCT 2024 to 31 OCT 2024