

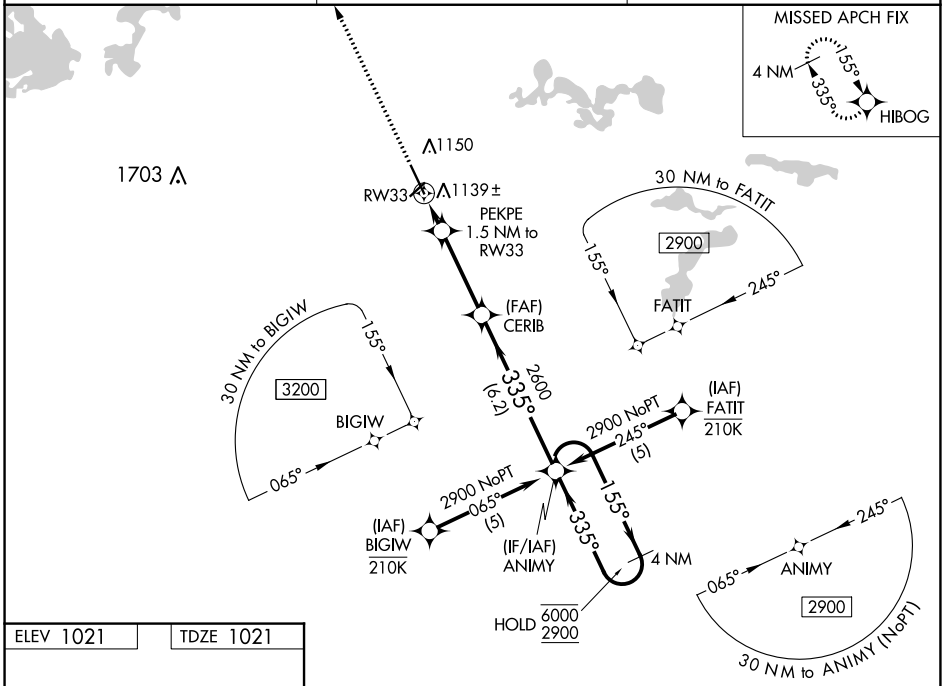
WAAS CH 86315 W33A	APP CRS 335°	Rwy ldg 6600 TDZE 1021 Apt Elev 1021
--	------------------------	---

RNAV (GPS) RWY 33

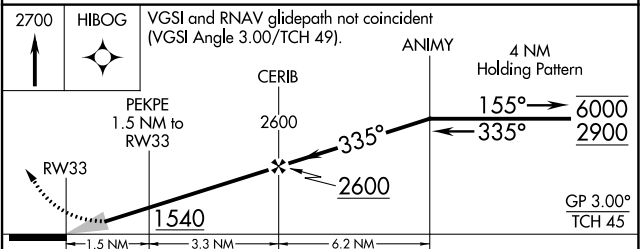
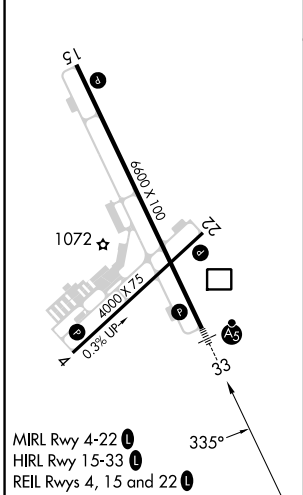
MANKATO RGNL (MKT)

RNP APCH - GPS. ▼ For uncompensated Baro-VNAV systems, LNAV/VNAV NA below -17°C or above 54°C. For inop ALS, increase LNAV/VNAV all Cats visibility to ¾ SM and LNAV Cats C and D visibility to 1 SM.	MALSR 	MISSED APPROACH: Climb to 2700 direct HIBOG and hold.
--	-----------	---

AWOS-3PT 118.175	MINNEAPOLIS CENTER 135.0 306.9	UNICOM 122.725 (CTAF)
----------------------------	--	---------------------------------



ELEV 1021	TDZE 1021
-----------	-----------



CATEGORY	A	B	C	D
LPV DA		1221-½	200 (200-½)	
LNAV/VNAV DA		1320-½	299 (300-½)	
LNAV MDA	1400-½	379 (400-½)	1400-⅝	379 (400-⅝)
CIRCLING	1460-1 439 (500-1)	1480-1 459 (500-1)	1600-1½ 579 (600-1½)	1600-2 579 (600-2)

NC-1, 08 AUG 2024 to 05 SEP 2024

NC-1, 08 AUG 2024 to 05 SEP 2024