

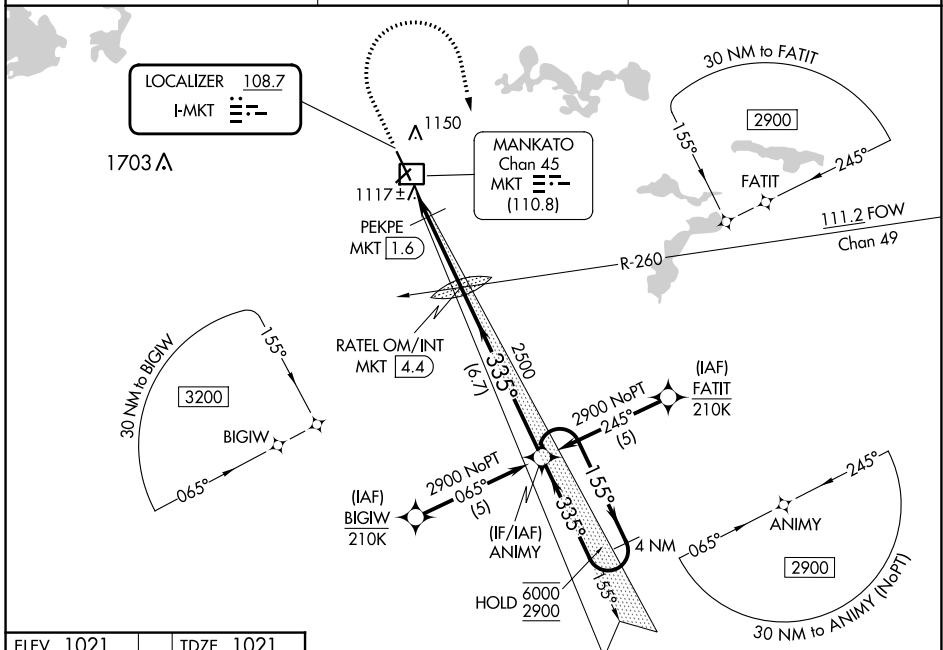
LOC I-MKT 108.7	APP CRS 335°	Rwy Idg 6600	TDZE 1021
		Apt Elev 1021	

ILS Y or LOC Y RWY 33

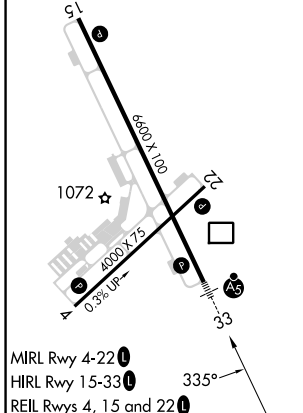
MANKATO RGNL (MKT)

RNP APCH - GPs.	MALSR	MISSED APPROACH: Climb to 1500 then climbing right turn to 2900 direct ANIMY and hold.
<p>NA *DME from MKT DME. DME use requires simultaneous reception of I-MKT and MKT DME. For inop ALS, increase PEKPE fix minimums S-LOC 33 Cats C/D visibility to 1 SM.</p>		

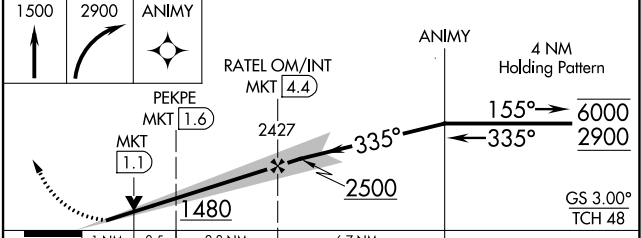
AWOS-3PT 118.175	MINNEAPOLIS CENTER 135.0 306.9	UNICOM 122.725 (CTAF)
----------------------------	--	---------------------------------



ELEV 1021	TDZE 1021
-----------	-----------



MIRL Rwy 4-22	HIRL Rwy 15-33	REIL Rws 4, 15 and 22			
FAF to MAP 4.3 NM					
Knots	60	90	120	150	180
Min:Sec	4:18	2:52	2:09	1:43	1:26



CATEGORY	A	B	C	D
S-ILS 33	1221-1/2 200 (200-1/2)			
S-LOC 33	1480-1/2	459 (500-1/2)	1480-7/8	459 (500-7/8)
CIRCLING	1480-1	459 (500-1)	1600-1/2	1600-2
			579 (600-1/2)	579 (600-2)
PEKPE FIX MINIMUMS*				
S-LOC 33	1380-1/2	359 (400-1/2)	1380-5/8	359 (400-5/8)
CIRCLING	1460-1	439 (500-1)	1600-1/2	1600-2
	439 (500-1)	459 (500-1)	579 (600-1/2)	579 (600-2)