

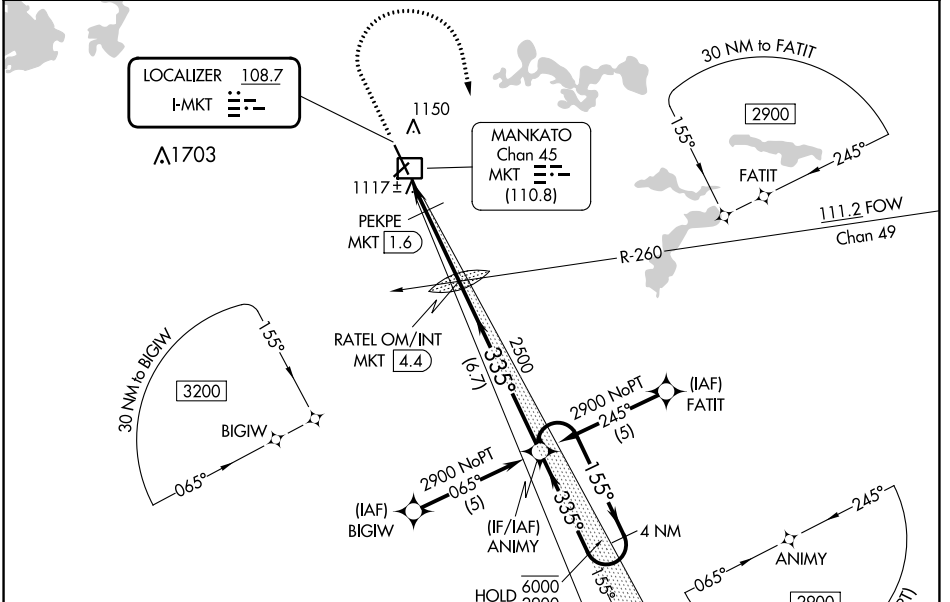
LOC I-MKT 108.7	APP CRS 335°	Rwy Idg TDZE Apt Elev	6600 1021 1021
---------------------------	------------------------	-----------------------------	---

COPTER ILS Z or LOC Z RWY 33

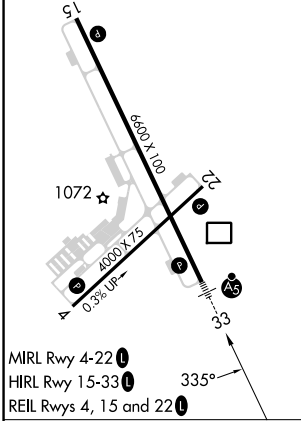
MANKATO RGNL (MKT)

RNP APCH - GPS.	MALSRL	MISSED APPROACH: Climb to 1500 then climbing right turn to 2900 direct ANIMY and hold.
DME from MKT DME. DME use requires simultaneous reception of I-MKT and MKT DME. For inop ALS, increase H-ILS 33 visibility to 3/8 SM, H-LOC 33 to 1/2 SM, and PEKPE fix minimums H-LOC 33 to 1/2 SM. * DME from MKT DME.		

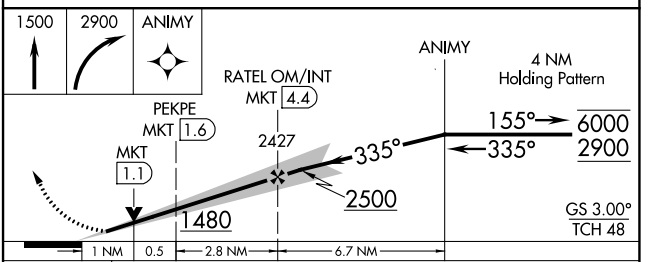
AWOS-3PT 118.175	MINNEAPOLIS CENTER 135.0 306.9	UNICOM 122.725 (CTAF)
----------------------------	--	---------------------------------



ELEV 1021	TDZE 1021
-----------	-----------



MIRL Rwy 4-22	
HIRL Rwy 15-33	335°
REIL Rwys 4, 15 and 22	
FAF to MAP 4.3 NM	
Knots	45 60 75 90 105
Min:Sec	5:44 4:18 3:26 2:52 2:27



CATEGORY	COPTER	
H-ILS 33	1221-1/4	200 (200-1/4)
H-LOC 33	1480-1/4	459 (500-1/4)
PEKPE FIX MINIMUMS*		
H-LOC 33	1380-1/4	359 (400-1/4)

COPTER ILS Z or LOC Z RWY 33

NC-1, 08 AUG 2024 to 05 SEP 2024

NC-1, 08 AUG 2024 to 05 SEP 2024