

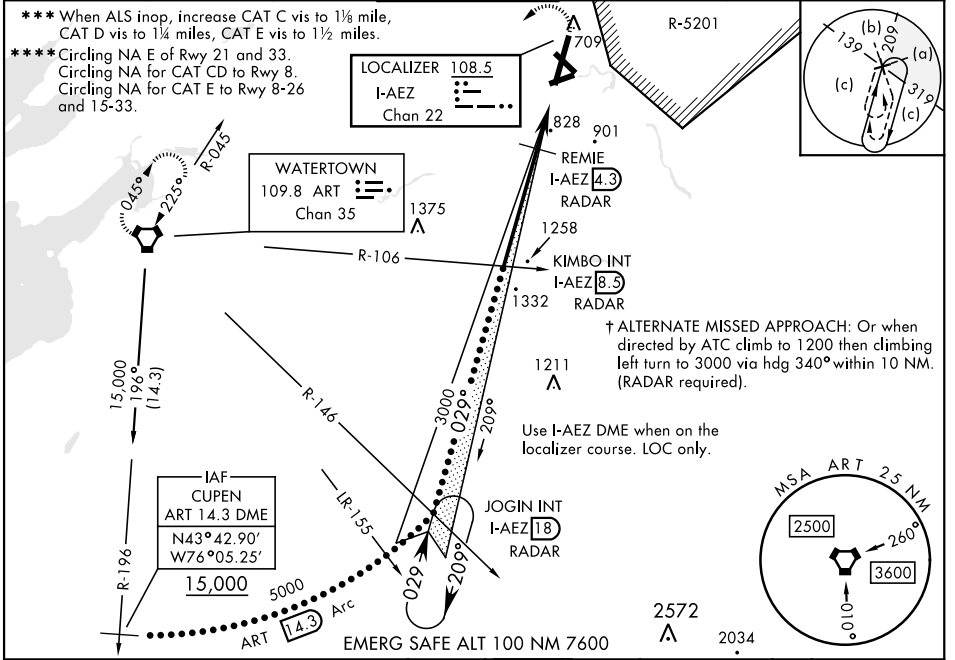
FORT DRUM, NEW YORK

HI-ILS or LOC RWY 3

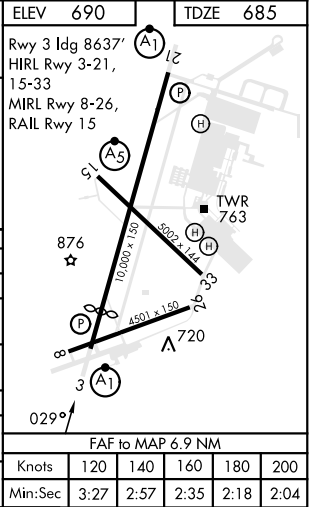
LOC/DME I-AEZ 108.5 Chan 22	APCH CRS 029°	Rwy ldg TDZE Arpt Elev 8637 685 690	AL-5754 [USA]	WHEELER-SACK AAF (KGTB)
---	-------------------------	---	---------------	-------------------------

DME or RADAR required	ALSF-1 	† MISSED APPROACH: Climb to 1200, then climbing left turn to 5000 direct ART VORTAC and hold, continue climb in hold to 5000.
-----------------------	------------	---

ATIS 119.525	APP CON 124.875 307.125	TOWER 118.75 290.25	GND CON 121.9 229.8	CLNC DEL 121.9	ASR/PAR
------------------------	-----------------------------------	-------------------------------	-------------------------------	--------------------------	---------



CUPEN R-196 ART 14.3	JOGIN INT ART R-146 I-AEZ 18 RADAR	KIMBO INT ART R-106 I-AEZ 8.3 RADAR	1200	5000	ART																												
15,000	5000	3000	1560	1560	1560																												
GS 3.00°	ART 14.3 Arc	029°	4.2 NM	2.7 NM																													
EMERG SAFE ALT 100 NM 7600																																	
<table border="1"> <tr> <th>CATEGORY</th> <th>C</th> <th>D</th> <th>E</th> </tr> <tr> <td>S-ILS 3*</td> <td colspan="3">957-1/2 272 (300-1/2)</td> </tr> <tr> <td>S-LOC 3**</td> <td>1560-2 875 (900-2)</td> <td>1560-2 1/4 875 (900-2 1/4)</td> <td>1560-2 1/2 875 (900-2 1/2)</td> </tr> <tr> <td>CIRCLING ****</td> <td>1560-2 1/2 870 (900-2 1/2)</td> <td>1560-2 3/4 870 (900-2 3/4)</td> <td>1640-3 950 (1000-3)</td> </tr> <tr> <td colspan="4">DME MINIMUMS</td> </tr> <tr> <td>S-LOC 3 ***</td> <td>1080-3/4 395</td> <td colspan="2">1080-1 395 (400-1)</td> </tr> <tr> <td>CIRCLING ****</td> <td>1220-1 1/2 530 (600-1 1/2)</td> <td>1380-2 1/4 690 (700-2 1/4)</td> <td>1640-3 950 (1000-3)</td> </tr> </table>						CATEGORY	C	D	E	S-ILS 3*	957-1/2 272 (300-1/2)			S-LOC 3**	1560-2 875 (900-2)	1560-2 1/4 875 (900-2 1/4)	1560-2 1/2 875 (900-2 1/2)	CIRCLING ****	1560-2 1/2 870 (900-2 1/2)	1560-2 3/4 870 (900-2 3/4)	1640-3 950 (1000-3)	DME MINIMUMS				S-LOC 3 ***	1080-3/4 395	1080-1 395 (400-1)		CIRCLING ****	1220-1 1/2 530 (600-1 1/2)	1380-2 1/4 690 (700-2 1/4)	1640-3 950 (1000-3)
CATEGORY	C	D	E																														
S-ILS 3*	957-1/2 272 (300-1/2)																																
S-LOC 3**	1560-2 875 (900-2)	1560-2 1/4 875 (900-2 1/4)	1560-2 1/2 875 (900-2 1/2)																														
CIRCLING ****	1560-2 1/2 870 (900-2 1/2)	1560-2 3/4 870 (900-2 3/4)	1640-3 950 (1000-3)																														
DME MINIMUMS																																	
S-LOC 3 ***	1080-3/4 395	1080-1 395 (400-1)																															
CIRCLING ****	1220-1 1/2 530 (600-1 1/2)	1380-2 1/4 690 (700-2 1/4)	1640-3 950 (1000-3)																														



NE-2, 08 AUG 2024 to 05 SEP 2024

NE-2, 08 AUG 2024 to 05 SEP 2024

FORT DRUM, NEW YORK
Amdt 2 20APR23

44°03'N-75°43'W

WHEELER-SACK AAF (KGTB)

HI-ILS or LOC RWY 3