

RNAV (GPS) RWY 25

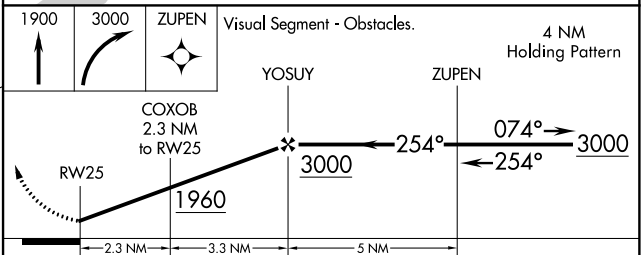
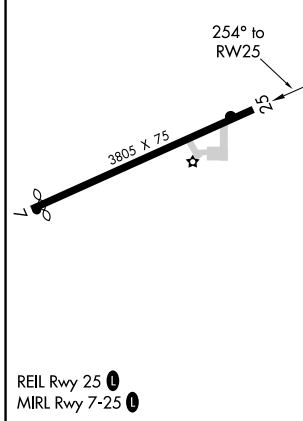
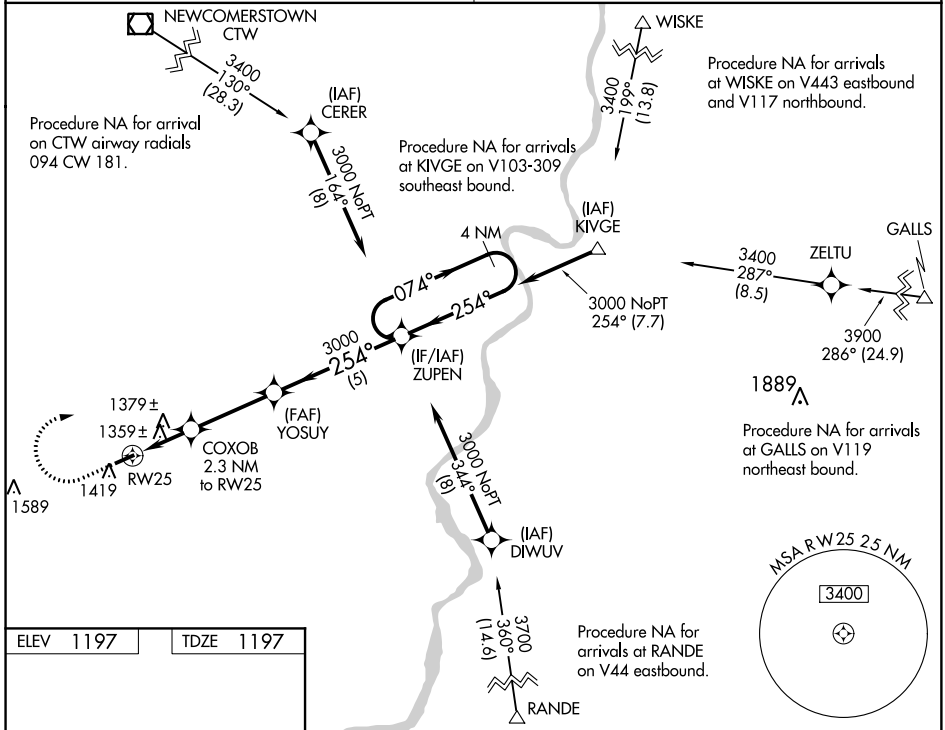
MONROE COUNTY (4G5)

WAAS CH 65833 W25A	APP CRS 254°	Rwy Idg TDZE 1197 Apt Elev 1197	3805
--	------------------------	---	-------------

NA DME/DME RNP-0.3 NA. Use Wheeling Ohio Co, WV altimeter setting; when not received use Parkersburg, WV altimeter setting and increase all MDA 60 feet; increase LP Cat C, LNAV Cat C and Circling Cat C visibility 1/4 mile. Procedure NA at night. Helicopter visibility reduction below 1 SM NA.

MISSED APPROACH: Climb to 1900 then climbing right turn to 3000 direct ZUPEN and hold.

CLEVELAND CENTER 126.95 239.3	UNICOM 122.8 (CTAF)
--	--------------------------------------



CATEGORY	A	B	C	D
LP MDA	1700-1	503 (600-1)	1700-1 ³ / ₈ 503 (600-1 ³ / ₈)	NA
LNAV MDA	1720-1	523 (600-1)	1720-1 ¹ / ₂ 523 (600-1 ¹ / ₂)	NA
C CIRCLING	1860-1	663 (700-1)	1860-1 ³ / ₄ 663 (700-1 ³ / ₄)	NA

EC-2, 12 SEP 2019 to 10 OCT 2019

EC-2, 12 SEP 2019 to 10 OCT 2019