

WAAS CH <b>77922</b> <b>W15A</b>	APP CRS <b>153°</b>	Rwy Idg TDZE Apt Elev	<b>4400</b> <b>828</b> <b>833</b>
--	------------------------	-----------------------------	---

# RNAV (GPS) RWY 15

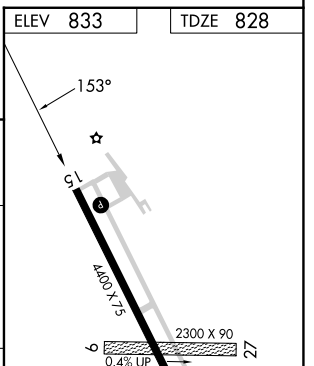
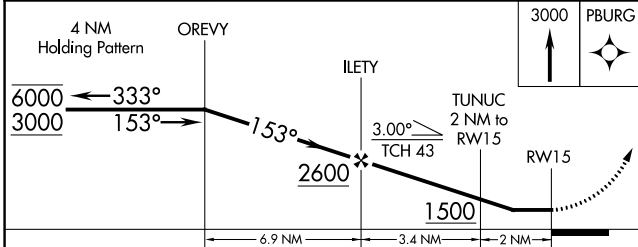
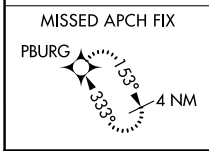
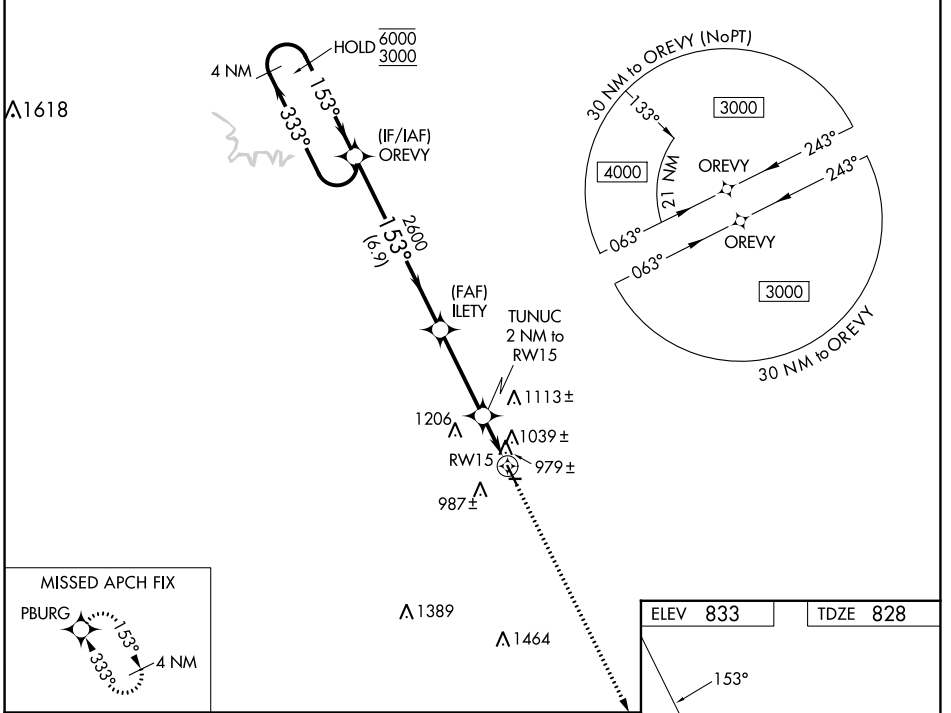
MONTICELLO RGNL (MXO)

RNP APCH - GPS.

**⚠** Circling NA to Rwys 9 and 27. Straight-in Rwy 15 NA at night, Circling Rwy 15 NA at night. Rwy 15 helicopter visibility reduction below 1 SM NA. When local altimeter setting not received, use Dubuque altimeter setting and increase all MDAs 100 feet; increase LP Cat C, LNAV Cat C and Circling Cat C visibility 1/2 SM.

MISSED APPROACH: Climb to 3000 direct PBURG and hold.

AWOS-3 <b>119.275</b>	CEDAR RAPIDS APP CON * <b>134.05 266.8</b>	UNICOM <b>122.8 (CTAF) 0</b>
--------------------------	---	---------------------------------



CATEGORY	A	B	C	D
LP MDA	1240-1	412 (500-1)	1240-1 1/8 412 (500-1 1/8)	NA
LNAV MDA	1300-1	472 (500-1)	1300-1 3/8 472 (500-1 3/8)	NA
CIRCLING	1380-1 547 (600-1)	1400-1 567 (600-1)	1520-2 687 (700-2)	NA

MIRL Rwy 15-33 **0**  
REIL Rwys 15 and 33 **0**

NC-3, 03 OCT 2024 to 31 OCT 2024

NC-3, 03 OCT 2024 to 31 OCT 2024